



Human Welfare and Community Action Commission

AGENDA

Wednesday, October 20, 2021

6:30 PM

PUBLIC ADVISORY: THIS MEETING WILL BE CONDUCTED EXCLUSIVELY THROUGH VIDEOCONFERENCE AND TELECONFERENCE

Pursuant to Section 3 of Executive Order N-29-20, issued by Governor Newsom on March 17, 2020, this meeting of the Housing Advisory Commission will be conducted exclusively through teleconference and Zoom videoconference. Please be advised that pursuant to the Executive Order, and to ensure the health and safety of the public by limiting human contact that could spread the COVID-19 virus, there will not be a physical meeting location available.

To access the meeting remotely using the internet: Join from a PC, Mac, iPad, iPhone, or Android device: Use URL –<https://zoom.us/j/4863098496>

If you do not wish for your name to appear on the screen, then use the drop down menu and click on "rename" to rename yourself to be anonymous. To request to speak, use the "raise hand" icon on the screen. **To join by phone: Dial 1-669-900-6833 and Enter Meeting ID: 486 309 8496.** If you wish to comment during the public comment portion of the agenda, press *9 and wait to be recognized by the Chair.

Preliminary Matters

1. Roll Call
2. Agenda Approval
3. Public Comment

Update/Action Items

The Commission may take action related to any subject listed on the agenda, except where noted.

Berkeley Community Action Agency Board Business

4. Approve minutes from the 7/21/2021 Regular Meeting (Attachment A) – All
5. Approve 2022 Community Services Block Grant (CSBG) Funding Contract (Attachment B)
6. Review City of Berkeley funded agency Program and Financial reports (Attachment C) — Staff
 - a. Berkeley Free Clinic program and financial reports

Open Items

7. Recommendation: Vacant Properties

8. Recommendation: Tax Transparency
9. Communication: Alta Bates Update
10. Communication: Against Commission Merger

Other Discussion Items

11. Discussion and possible action on communication to Council regarding distribution of rent relief program information – Commissioner Sood (Attachment D)
12. Discuss possible improvements to the HWCAC request for proposal review process – Commissioner Kohn
13. Discuss potential questionnaire to City Council regarding HWCAC priorities – Commissioner Bookstein
14. Discussion and possible action regarding how community agency complaints and concerns are addressed – Commissioners Behm-Steinberg and Sood
15. Discuss 24-hour emergency homeless shelter at 742 Grayson Street – Commissioner Bookstein
16. Discussion and possible action regarding communication with Council on the status of the Pathways facility consultant's report – Commissioner Behm-Steinberg (Attachment E)
17. Discussion and possible action on communication to Council regarding Easy Does It site review – Commissioner Behm-Steinberg
18. Discuss current state of homelessness in Berkeley – Commissioner Omodele
19. Discuss Berkeley air quality – Commissioner Bookstein
20. Review latest City Council meeting agenda
21. Announcements
22. Future Agenda Items

Adjournment

Attachments

- A. Draft Minutes of the 7/21/2021 Meeting
- B. CSBG 2022 Funding Planning Letter
- C. Program and financial reports from Berkeley Free Clinic
- D. Draft communication to Council regarding distribution of rent relief program information
- E. Pathways Report Update

Review City Council Meeting Agenda at City Clerk Dept. or
<http://www.cityofberkeley.info/citycouncil>

Communications

Communications to Berkeley boards, commissions or committees are public record and will become part of the City's electronic records, which are accessible through the City's website. **Please note: e-mail addresses, names, addresses, and other contact information are not required, but if included in any communication to a City board, commission or committee, will become part of the public record.** If you do not want your e-mail address or any other contact information to be made public, you may deliver communications via U.S. Postal Service or in person to the secretary of the relevant board, commission or committee. If you do not want your contact information included in the public record, please do not include that information in your communication. Please contact the secretary to the relevant board, commission or committee for further information. Any writings or documents provided to a majority of the Commission regarding any item on this agenda will be made available for public inspection at Housing and Community Services Department located at 2180 Milvia Street, 2nd Floor.

This meeting is being held in a wheelchair accessible location. To request a disability-related accommodation(s) to participate in the meeting, including auxiliary aids or services, please contact the Disability Services specialist at 981-6418 (V) or 981-6347 (TDD) at least three business days before the meeting date. **Please refrain from wearing scented products to this meeting.**

Secretary:

Mary-Claire Katz
Health, Housing & Community Services Department
510-981-5414
mkatz@CityofBerkeley.info

Mailing Address:

Human Welfare and Community Action Commission
Mary-Claire Katz, Secretary
2180 Milvia Street, 2nd Floor
Berkeley, CA 94704



Human Welfare and Community Action Commission

DRAFT MINUTES

Wednesday, July 21, 2021

6:30 PM

PUBLIC ADVISORY: THIS MEETING WILL BE CONDUCTED EXCLUSIVELY THROUGH VIDEOCONFERENCE AND TELECONFERENCE

Pursuant to Section 3 of Executive Order N-29-20, issued by Governor Newsom on March 17, 2020, this meeting of the Housing Advisory Commission will be conducted exclusively through teleconference and Zoom videoconference. Please be advised that pursuant to the Executive Order, and to ensure the health and safety of the public by limiting human contact that could spread the COVID-19 virus, there will not be a physical meeting location available.

To access the meeting remotely using the internet: Join from a PC, Mac, iPad, iPhone, or Android device: Use URL –<https://zoom.us/j/4863098496>

If you do not wish for your name to appear on the screen, then use the drop down menu and click on "rename" to rename yourself to be anonymous. To request to speak, use the "raise hand" icon on the screen. **To join by phone: Dial 1-669-900-6833 and Enter Meeting ID: 486 309 8496.** If you wish to comment during the public comment portion of the agenda, press *9 and wait to be recognized by the Chair.

Preliminary Matters

1. Roll Call

Present: Behm-Steinberg, Bookstein, Dunner, Omodele, Romo, Sood (6:37PM arrival), Pelley, Sim

Absent: Hill, Kohn (excused), Yun

Quorum: 6 (Attended: 8)

Staff Present: Mary-Claire Katz, Rhianna Babka

Public Present: None.

2. Agenda Approval

Action: M/S/C (Romo/Pelley) to reorder the agenda to discuss item 14 after item 9, withdraw item 11, and to discuss item 6 after item 5.

Vote: Ayes – Behm-Steinberg, Bookstein, Dunner, Omodele, Romo, Sood, Pelley, Sim; Noes – None; Abstain – None; Absent – Hill, Kohn (excused), Yun.

3. Public Comment

None.

Update/Action Items

The Commission may take action related to any subject listed on the agenda, except where noted.

Berkeley Community Action Agency Board Business

4. Approve minutes from the 6/16/2021 Regular Meeting (Attachment A) – All
Action: M/S/C (Bookstein/Sim) to approve the 6/16/21 minutes.
Vote: Ayes – Behm-Steinberg, Bookstein, Omodele, Sood, Sim; Noes – None; Abstain – Dunner, Pelley, Romo; Absent – Hill, Kohn (excused), Yun.
5. Chair election – All
Action: M/S/C (Romo/Omodele) to elect Sood as chair of the HWCAC.
Vote: Ayes – Behm-Steinberg, Bookstein, Dunner, Omodele, Romo, Sood, Pelley, Sim; Noes – None; Abstain – None; Absent – Hill, Kohn (excused), Yun.
1. Low-income representative election – All (Attachment B)
Action: M/S/C (Bookstein/Omodele) to elect George Lippman as a low-income representative on the HWCAC.
Vote: Ayes – Behm-Steinberg, Bookstein, Dunner, Omodele, Romo, Sood, Pelley, Sim; Noes – None; Abstain – None; Absent – Hill, Kohn (excused), Yun.
2. Commission agenda item request process – Staff
 Staff provide information to the commissioners on how to request items to be included on commission meeting agendas.
3. Commissioner Manual review: Order and Decorum – Staff (Attachment C)
 Staff reviews the sections of the commissioner manual that include commission order and decorum.
4. Review City of Berkeley funded agency Program and Financial reports (Attachment D) — Staff
 - a. Commissioners review program and financial reports for Through The Looking Glass’s Berkeley Parenting and Disability Project.

Other Discussion Items

5. Review and discuss City of Berkeley Commission minutes – All
 Commissioners discuss the Homeless Commission meeting minutes.
6. Presentation from Youth ALIVE! – Youth ALIVE! representatives
 Agenda item withdrawn by Romo.
7. Discussion and possible action on sidewalk ordinance enforcement and RV ordinance enforcement (Attachment E) – Commissioner Behm-Steinberg
Action: M/S/C (Sood/Bookstein) to move this item to the next regular meeting agenda after the Homeless Commission has voted on this topic.
Vote: Ayes –Bookstein, Omodele, Romo, Sood, Pelley, Sim; Noes – None; Abstain – Behm-Steinberg, Dunner, Lippman (unconfirmed); Absent – Hill, Kohn (excused), Yun.

8. Discussion and possible action on accessibility issues, including Pathways and new facility at Grayson St. Staff v. Consultants; Ombudsman; and new liability concerns over Justice Department ruling on Mental Health – Commissioner Behm-Steinberg (Attachments F and G)

Action: M/S/C (Romo/Omodele) to move this item to the next regular meeting agenda.

Vote: Ayes – Behm-Steinberg, Bookstein, Dunner, Omodele, Romo, Sood, Pelley, Sim, Lippman (unconfirmed); Noes – None; Abstain – None; Absent – Hill, Kohn (excused), Yun.

9. Discussion and possible action on draft public comment regarding Alta Bates Hospital (Attachment H) – Commissioner Omodele

Action: M/S/C (Sood/Omodele) to accept the draft public comment and submit it to Council as a letter, with the addition of adding a request to invite Council or City Manager representative to present on this topic at the September regular meeting of the HWCAC.

Vote: Ayes – Behm-Steinberg, Bookstein, Dunner, Omodele, Romo, Sood, Pelley, Sim, Lippman (unconfirmed); Noes – None; Abstain – None; Absent – Hill, Kohn (excused), Yun.

Action: M/S/C (Sood/Bookstein) to discuss item 22 after item 14.

Vote: Ayes – Behm-Steinberg, Bookstein, Dunner, Omodele, Romo, Sood, Pelley, Sim, Lippman (unconfirmed); Noes – None; Abstain – None; Absent – Hill, Kohn (excused), Yun.

10. Discuss TOPA implications on rent control and possible rent control reforms – Commissioners Omodele and Behm-Steinberg

Continued to the 9/15/21 meeting.

11. Discuss citywide public restrooms report – Commissioner Behm-Steinberg

Continued to the 9/15/21 meeting.

12. Discuss disabled accessibility in high-density corridors – Commissioner Behm-Steinberg

Continued to the 9/15/21 meeting.

13. Discuss possible improvements to the HWCAC request for proposal review process – Commissioner Kohn

Continued to the 9/15/21 meeting.

14. Discuss City grant writer procurement – Commissioner Behm-Steinberg

Continued to the 9/15/21 meeting.

15. Discuss potential questionnaire to City Council regarding HWCAC priorities – Commissioner Bookstein
 Continued to the 9/15/21 meeting.
16. Discuss current state of homelessness in Berkeley – Commissioner Omodele
 Continued to the 9/15/21 meeting.
17. Discussion and possible action on letter to Council regarding commission mergers (Attachments I and J) – Commissioner Behm-Steinberg
Action: M/S/C (Sood/Bookstein) that the HWCAC opposes the consolidation of itself and the Peace & Justice Commission.
Vote: Ayes – Behm-Steinberg, Bookstein, Dunner, Omodele, Romo, Sood, Pelley, Sim; Noes – None; Abstain – Lippman (unconfirmed); Absent – Hill, Kohn (excused), Yun.
- Action:** M/S/C (Sood/Pelley) to accept Sood’s revision of Behm-Steinberg’s letter opposing the merger between the HWCAC and the Peace & Justice Commission and to send the letter to Council.
Vote: Ayes – Behm-Steinberg, Bookstein, Dunner, Omodele, Romo, Sood, Pelley, Sim; Noes – None; Abstain – Lippman (unconfirmed); Absent – Hill, Kohn (excused), Yun.
- Action:** M/S/C (Sood/Omodele) to extend the meeting to 8:35PM.
Vote: Ayes – Behm-Steinberg, Bookstein, Dunner, Omodele, Romo, Sood, Pelley, Sim, Lippman (unconfirmed); Noes – None; Abstain – None; Absent – Hill, Kohn (excused), Yun.
18. Discuss 24-hour emergency homeless shelter at 742 Grayson Street – Commissioner Bookstein
 Continued to the 9/15/21 meeting.
19. Discuss Berkeley air quality – Commissioner Bookstein
 Continued to the 9/15/21 meeting.
20. Discussion and possible action on letter to Council regarding both the current situation at Pathways (and New Horizons) and the supply of affordable housing throughout the City (Attachment K) – Commissioner Behm-Steinberg
 Continued to the 9/15/21 meeting.
21. Review latest City Council meeting agenda
 Continued to the 9/15/21 meeting.
22. Announcements
 Bookstein discusses Bayer campus and air quality implications.

23. Future Agenda Items

Action: M/S/C (Sood/Bookstein) to move remaining agenda items to the next regular meeting.

Vote: Ayes – Behm-Steinberg, Bookstein, Dunner, Omodele, Romo, Sood, Pelley, Sim, Lippman (unconfirmed); Noes – None; Abstain – None; Absent – Hill, Kohn (excused), Yun.

Adjournment

Action: M/S/C (Sood/Omodele) to adjourn at 8:35PM.

Vote: Ayes – Behm-Steinberg, Bookstein, Dunner, Omodele, Romo, Sood, Pelley, Sim, Lippman (unconfirmed); Noes – None; Abstain – None; Absent – Hill, Kohn (excused), Yun.

Attachments

- A. Draft Minutes of the 6/16/2021 Meeting
- B. Low-income representative nomination form
- C. Order and Decorum Commissioner Manual excerpt
- D. Program and financial reports from Through The Looking Glass
- E. Draft letter to Council regarding sidewalk ordinance enforcement and RV ordinance enforcement
- F. STAIR email to Disability Commission secretary
- G. Local Adoption of Emergency Amendments to the 2016 California Building Code Governing Emergency Housing
- H. Draft public comment regarding Alta Bates Hospital
- I. Draft letter to Council regarding commission mergers
- J. New draft letter to Council regarding commission mergers from Behm-Steinberg
- K. Draft letter to Council regarding both the current situation at Pathways (and New Horizons) and the supply of affordable housing throughout the City

Review City Council Meeting Agenda at City Clerk Dept. or
<http://www.cityofberkeley.info/citycouncil>

Communications

Communications to Berkeley boards, commissions or committees are public record and will become part of the City's electronic records, which are accessible through the City's website. **Please note: e-mail addresses, names, addresses, and other contact information are not required, but if included in any communication to a City board, commission or committee, will become part of the public record.** If you do not want your e-mail address or any other contact information to be made public, you may deliver communications via U.S. Postal Service or in person to the secretary of the relevant board, commission or committee. If you do not want your contact information included in the public record, please do not include that information in your communication. Please contact the secretary to the relevant board, commission or committee for further information. Any writings or documents provided to a majority of the Commission regarding any item on this agenda will be made available for public inspection at Housing and Community Services Department located at 2180 Milvia Street, 2nd Floor.

This meeting is being held in a wheelchair accessible location. To request a disability-related accommodation(s) to participate in the meeting, including auxiliary aids or services, please contact the Disability Services specialist at 981-

Draft Minutes – HWCAC
July 21, 2021
Page 6 of 6

6418 (V) or 981-6347 (TDD) at least three business days before the meeting date. **Please refrain from wearing scented products to this meeting.**

Secretary:

Mary-Claire Katz
Health, Housing & Community Services Department
510-981-5414
mkatz@CityofBerkeley.info

Mailing Address:

Human Welfare and Community Action Commission
Mary-Claire Katz, Secretary
2180 Milvia Street, 2nd Floor
Berkeley, CA 94704



DAVID SCRIBNER
DIRECTOR

State of California-Health and Human Services Agency
DEPARTMENT OF COMMUNITY SERVICES AND DEVELOPMENT
2389 Gateway Oaks Drive, Suite 100, Sacramento, CA 95833
Telephone: (916) 576-7109 | Fax: (916) 263-1406
www.csd.ca.gov



GAVIN NEWSOM
GOVERNOR

ATTACHMENT B

August 30, 2021

Dear Executive Director:

The purpose of this letter is to notify you that the 2022 Community Services Block Grant (CSBG) contract is scheduled for release in mid-October 2021. The Department of Community Services and Development (CSD) is providing the attached planning allocation spreadsheet for the 2022 CSBG Program Year, along with the estimated contract amount for your agency to assist in securing the required board resolution prior to the contract start date of January 1, 2022. To access a sample Board Resolution, click on the following link to access the CSBG forms tab on CSD's Local Agencies Portal: <https://agencies.csd.ca.gov/Pages/default.aspx>

In order to execute your agency's contract(s) prior to the effective date of January 1, 2022, CSD requests that the contract packets including the program deliverables be completed and returned within 30 days for private nonprofit agencies and 45 days for public agencies, following receipt of the 2022 CSBG contract packet.

CSD is utilizing the DocuSign platform to facilitate the receipt of the 2022 CSBG contract. Please ensure that the DocuSign form CSD 489 is updated and submitted to your designated field representative for changes to your agency's contract recipient. To access the DocuSign form, please follow the link to the forms page on the Local Agencies Portal: <https://agencies.csd.ca.gov/home/CSBG/Pages/Forms.aspx#k=#s=16>

CSD looks forward to a continued productive partnership so that, together, we can effectively administer our critical programs and services designed to strengthen the economic security of vulnerable Californians.

Sincerely,

DAVID SCRIBNER
Director

Attachments

State of California
 Department of Community Services and Development
 2022 CSBG Distribution of Funds

FOR CSD USE ONLY

2005 Award	56,499,723
EST 2022 Award	65,519,449
2021 Award	65,519,449

15.96%

0.00%

If reduction of 20% or more, convene network

Use discretionary to backfill reductions up to 3.5% ONLY

DISTRIBUTION	100.0%	2021 Breakdown	EST 2022 Breakdown	EST 2022 Allocation	Difference	First Release 8/9/21	Total Funds
CAA	76.1%	49,860,301	49,860,301	49,860,301	0	49,860,301	49,860,301
MSFW	10.0%	6,551,945	6,551,945	6,551,945	0	6,551,945	6,551,945
NAI	3.9%	2,555,259	2,555,259	2,555,259	0	2,555,259	2,555,259
DISC	5.0%	3,275,972	3,275,972	3,275,972	0	3,275,972	3,275,972
CSD ADMIN	5.0%	3,275,972	3,275,972	3,275,972	0	3,275,972	3,275,972
TOTAL		65,519,449	65,519,449	65,519,449	0	65,519,449	65,519,449

0

0

0

0

NATIVE AMERICAN INDIANS

Agency	Contract Number	Total 2022 Contract	25% Advance
Karuk Tribe (NAI-LPA) (Core Funding)	22F-5101	42,000	0
Karuk Tribe (NAI-LPA)	22F-5102	81,891	0
NCIDC, Inc. (NAI-LPA) (Core Funding)	22F-5103	122,000	30,500
NCIDC, Inc./LIFE (NAI-LPA) (Core Funding)	<i>(Included with NCIDC below)</i>		
NCIDC, Inc. (NAI-LPA)	22F-5104	2,016,115	504,029
Co of LA Workforce Dev, Aging & Com Srvc	22F-5105	293,253	73,313
TOTAL		<u>2,555,259</u>	<u>607,842</u>

MIGRANT & SEASONAL FARMWORKERS

Agency	Contract Number	Total 2022 Contract	25% Advance
California Human Development Corporation	22F-5201	1,506,947	376,737
Proteus, Inc.	22F-5202	2,424,220	606,055
Central Valley Opportunity Center, Inc.	22F-5203	589,675	147,419
Center for Employment Training	22F-5204	2,031,103	507,776
TOTAL		<u>6,551,945</u>	<u>1,637,987</u>

**LIMITED PURPOSE AGENCIES
 (DISCRETIONARY FUNDS)**

Agency	Contract Number	Total 2022 Contract	25% Advance
Community Design Center	22F-5301	174,886	43,722
Del Norte Senior Center, Inc.	22F-5302	141,224	35,306
Rural Community Assistance Corporation	22F-5303	189,677	0
TOTAL		<u>505,787</u>	<u>79,028</u>

State of California
 Department of Community Services and Development
 2022 CSBG Allocation
 CAAs

Attachment A

County	Agency	Contract Number	Total 2022 Contract	25% Advance
Alameda	Berkeley Community Action Agency	22F-5001	274,202	68,551
Alameda	City of Oakland, Human Services Department	22F-5002	1,391,569	347,892
Alpine	Inyo Mono Advocates for Community Action, Inc.	22F-5003	1,344	336
Amador/Tuolumne	Amador-Tuolumne Community Action Agency	22F-5004	268,469	67,117
Butte	Community Action Agency of Butte County, Inc.	22F-5005	371,228	92,807
Calaveras/Mariposa	Calaveras-Mariposa Community Action Agency	22F-5006	267,779	66,945
Colusa	SEE GLENN COUNTY			
Contra Costa	Contra Costa Employment & Human Services Dept/CSB	22F-5007	873,970	218,493
Del Norte	Del Norte Senior Center, Inc.	22F-5008	52,584	13,146
El Dorado	El Dorado County Health and Human Services Agency	22F-5009	293,811	0
Fresno	Fresno County Economic Opportunities Commission	22F-5010	1,905,650	476,413
Glenn/Colusa/Trinity	Glenn County Community Action Department	22F-5011	269,282	67,321
Humboldt	Redwood Community Action Agency	22F-5012	276,589	69,147
Imperial	Campesinos Unidos, Inc.	22F-5013	321,966	80,492
Inyo/Mono	Inyo Mono Advocates for Community Action, Inc.	22F-5014	265,960	66,490
Kern	Community Action Partnership of Kern	22F-5015	1,530,496	382,624
Kings	Kings Community Action Organization, Inc.	22F-5016	309,457	0
Lake/Mendocino	North Coast Opportunities, Inc.	22F-5017	561,536	140,384
Lassen/Plumas/Sierra	Plumas County Community Development Commission	22F-5018	267,437	66,859
Los Angeles	Foothill Unity Center, Inc.	22F-5019	331,185	82,796
Los Angeles	Long Beach Community Action Partnership	22F-5020	808,733	202,183
Los Angeles	County of Los Angeles Dept. of Public Social Services	22F-5021	6,239,069	0
Los Angeles	City of Los Angeles Housing + Community Investment Dept.	22F-5022	6,756,987	1,689,247
Madera	Community Action Partnership of Madera County, Inc.	22F-5023	286,748	71,687
Marin	Community Action Marin	22F-5024	277,112	69,278
Mariposa	SEE CALAVERAS COUNTY			
Mendocino	SEE LAKE COUNTY			
Merced	Merced County Community Action Agency	22F-5025	513,137	128,284
Modoc/Siskiyou	Modoc-Siskiyou Community Action Agency	22F-5026	269,282	67,321
Mono	SEE INYO COUNTY			
Monterey	Monterey County Community Action Partnership	22F-5027	514,145	128,536
Napa	Community Action Napa Valley	22F-5028	294,879	73,720
Nevada	Nevada County Dept. of Housing & Community Services	22F-5029	278,748	0
Orange	Community Action Partnership of Orange County	22F-5030	2,808,423	702,106

State of California
 Department of Community Services and Development
 2022 CSBG Allocation
 CAAs

Attachment A

County	Agency	Contract Number	Total 2022 Contract	25% Advance
Placer	Project GO, Inc.	22F-5031	343,522	85,881
Plumas	SEE LASSEN COUNTY			
Riverside	Community Action Partnership of Riverside County	22F-5032	2,672,059	668,015
Sacramento	Sacramento Employment and Training Agency	22F-5033	1,815,891	453,973
San Benito	San Benito County H&HSA, CS & WD	22F-5034	275,298	0
San Bernardino	Community Action Partnership of San Bernardino County	22F-5035	2,766,917	691,729
San Diego	County of San Diego, H&HSA, CAP	22F-5036	3,427,251	856,813
San Francisco	Urban Services YMCA	22F-5037	878,653	219,663
San Joaquin	San Joaquin County Dept. of Aging & Community Services	22F-5038	1,001,853	0
San Luis Obispo	CAP of San Luis Obispo County, Inc.	22F-5039	305,707	0
San Mateo	San Mateo County Human Services Agency	22F-5040	465,921	0
Santa Barbara	Community Action Commission of Santa Barbara County	22F-5041	544,516	136,129
Santa Clara	Sacred Heart Community Service	22F-5042	1,454,766	363,692
Santa Cruz	Community Action Board of Santa Cruz County, Inc.	22F-5043	298,195	74,549
Shasta	Shasta County Community Action Agency	22F-5044	307,734	0
Sierra	SEE LASSEN COUNTY			
Siskiyou	SEE MODOC COUNTY			
Solano	Community Action Partnership of Solano, JPA	22F-5045	395,290	98,823
Sonoma	Community Action Partnership of Sonoma County	22F-5046	461,030	115,258
Stanislaus	Central Valley Opportunity Center, Inc.	22F-5047	787,054	196,764
Sutter	Sutter County Community Action Agency	22F-5048	276,561	69,140
Tehama	Tehama County Community Action Agency	22F-5049	293,419	73,355
Trinity	SEE GLENN COUNTY			
Tulare	Community Services & Employment Training, Inc.	22F-5050	923,427	230,857
Tuolumne	SEE AMADOR COUNTY			
Ventura	Community Action of Ventura County, Inc.	22F-5051	700,758	175,190
Yolo	County of Yolo Health and Human Services Agency	22F-5052	302,667	75,667
Yuba	Yuba County Community Services Commission	22F-5053	280,035	70,009
TOTAL, all counties			<u>49,860,301</u>	<u>10,095,682</u>

State of California
Department of Community Services and Development
2022 CSBG Allocation
Non-CAAs

NATIVE AMERICAN INDIANS

Agency	Public/Private (Account)	Contract Number	First Release (8/9/21) PCA 40322	Total 2022 Contract	First Advance (8/9/21)	Total 25% Advance
Karuk Tribe (NAI-LPA) (Core Funding)	5432000	22F-5101	42,000	42,000	0	0
Karuk Tribe (NAI-LPA)	5432000	22F-5102	81,891	81,891	0	0
NCIDC, Inc. (NAI-LPA) (Core Funding)	5432500	22F-5103	122,000	122,000	30,500	30,500
NCIDC, Inc./LIFE (NAI-LPA) (Core Funding)	<i>(Included with NCIDC below)</i>					
NCIDC, Inc. (NAI-LPA)	5432500	22F-5104	2,016,115	2,016,115	504,029	504,029
Co of LA Workforce Dev, Aging & Com Srvc	5432000	22F-5105	293,253	293,253	73,313	73,313
TOTAL			2,555,259	2,555,259	607,842	607,842

MIGRANT & SEASONAL FARMWORKERS

Agency	Public/Private (Account)	Contract Number	First Release (8/9/21) PCA 40222	Total 2022 Contract	First Advance (8/9/21)	Total 25% Advance
California Human Development Corporation	5432500	22F-5201	1,506,947	1,506,947	376,737	376,737
Proteus, Inc.	5432500	22F-5202	2,424,220	2,424,220	606,055	606,055
Central Valley Opportunity Center, Inc.	5432500	22F-5203	589,675	589,675	147,419	147,419
Center for Employment Training	5432500	22F-5204	2,031,103	2,031,103	507,776	507,776
TOTAL			6,551,945	6,551,945	1,637,987	1,637,987

**LIMITED PURPOSE AGENCIES
(DISCRETIONARY FUNDS)**

Agency	Public/Private (Account)	Contract Number	First Release (8/9/21) PCA 40422	Total 2022 Contract	First Advance (8/9/21)	Total 25% Advance
Community Design Center	5432500	22F-5301	174,886	174,886	43,722	43,722
Del Norte Senior Center, Inc.	5432500	22F-5302	141,224	141,224	35,306	35,306
Rural Community Assistance Corporation	5432500	22F-5303	189,677	189,677	0	0
TOTAL			505,787	505,787	79,028	79,028

State of California
 Department of Community Services and Development
 2022 CSBG Allocation
 CAAs

ATTACHMENT B
FOR CSD USE ONLY

County	Agency	Public/Private (Account)	Contract Number	First Release (8/9/21) PCA 40122	Total 2022 Contract	First Advance (8/9/21)	Total 25% Advance
Alameda	Berkeley Community Action Agency	5432000	22F-5001	274,202	274,202	68,551	68,551
Alameda	City of Oakland, Human Services Department	5432000	22F-5002	1,391,569	1,391,569	347,892	347,892
Alpine	Inyo Mono Advocates for Community Action, Inc.	5432500	22F-5003	1,344	1,344	336	336
Amador/Tuolumne	Amador-Tuolumne Community Action Agency	5432000	22F-5004	268,469	268,469	67,117	67,117
Butte	Community Action Agency of Butte County, Inc.	5432500	22F-5005	371,228	371,228	92,807	92,807
Calaveras/Mariposa	Calaveras-Mariposa Community Action Agency	5432000	22F-5006	267,779	267,779	66,945	66,945
Colusa	SEE GLENN COUNTY						
Contra Costa	Contra Costa Employment & Human Services Dept/CSB	5432000	22F-5007	873,970	873,970	218,493	218,493
Del Norte	Del Norte Senior Center, Inc.	5432500	22F-5008	52,584	52,584	13,146	13,146
El Dorado	El Dorado County Health and Human Services Agency	5432000	22F-5009	293,811	293,811	0	0
Fresno	Fresno County Economic Opportunities Commission	5432500	22F-5010	1,905,650	1,905,650	476,413	476,413
Glenn/Colusa/Trinity	Glenn County Community Action Department	5432000	22F-5011	269,282	269,282	67,321	67,321
Humboldt	Redwood Community Action Agency	5432500	22F-5012	276,589	276,589	69,147	69,147
Imperial	Campesinos Unidos, Inc.	5432500	22F-5013	321,966	321,966	80,492	80,492
Inyo/Mono	Inyo Mono Advocates for Community Action, Inc.	5432500	22F-5014	265,960	265,960	66,490	66,490
Kern	Community Action Partnership of Kern	5432500	22F-5015	1,530,496	1,530,496	382,624	382,624
Kings	Kings Community Action Organization, Inc.	5432500	22F-5016	309,457	309,457	0	0
Lake/Mendocino	North Coast Opportunities, Inc.	5432500	22F-5017	561,536	561,536	140,384	140,384
Lassen/Plumas/Sierra	Plumas County Community Development Commission	5432000	22F-5018	267,437	267,437	66,859	66,859
Los Angeles	Foothill Unity Center, Inc.	5432500	22F-5019	331,185	331,185	82,796	82,796
Los Angeles	Long Beach Community Action Partnership	5432500	22F-5020	808,733	808,733	202,183	202,183
Los Angeles	County of Los Angeles Dept. of Public Social Services	5432000	22F-5021	6,239,069	6,239,069	0	0
Los Angeles	City of Los Angeles Housing + Community Investment Dept.	5432000	22F-5022	6,756,987	6,756,987	1,689,247	1,689,247
Madera	Community Action Partnership of Madera County, Inc.	5432500	22F-5023	286,748	286,748	71,687	71,687
Marin	Community Action Marin	5432500	22F-5024	277,112	277,112	69,278	69,278
Mariposa	SEE CALAVERAS COUNTY						
Mendocino	SEE LAKE COUNTY						
Merced	Merced County Community Action Agency	5432500	22F-5025	513,137	513,137	128,284	128,284
Modoc/Siskiyou	Modoc-Siskiyou Community Action Agency	5432000	22F-5026	269,282	269,282	67,321	67,321
Mono	SEE INYO COUNTY						
Monterey	Monterey County Community Action Partnership	5432000	22F-5027	514,145	514,145	128,536	128,536
Napa	Community Action Napa Valley	5432500	22F-5028	294,879	294,879	73,720	73,720
Nevada	Nevada County Dept. of Housing & Community Services	5432000	22F-5029	278,748	278,748	0	0

County	Agency	Public/Private (Account)	Contract Number	First Release (8/9/21) PCA 40122	Total 2022 Contract	First Advance (8/9/21)	Total 25% Advance
Orange	Community Action Partnership of Orange County	5432500	22F-5030	2,808,423	2,808,423	702,106	702,106
Placer	Project GO, Inc.	5432500	22F-5031	343,522	343,522	85,881	85,881
Plumas	SEE LASSEN COUNTY						
Riverside	Community Action Partnership of Riverside County	5432000	22F-5032	2,672,059	2,672,059	668,015	668,015
Sacramento	Sacramento Employment and Training Agency	5432000	22F-5033	1,815,891	1,815,891	453,973	453,973
San Benito	San Benito County H&HSA, CS & WD	5432000	22F-5034	275,298	275,298	0	0
San Bernardino	Community Action Partnership of San Bernardino County	5432500	22F-5035	2,766,917	2,766,917	691,729	691,729
San Diego	County of San Diego, H&HSA, CAP	5432000	22F-5036	3,427,251	3,427,251	856,813	856,813
San Francisco	Urban Services YMCA	5432500	22F-5037	878,653	878,653	219,663	219,663
San Joaquin	San Joaquin County Dept. of Aging & Community Services	5432000	22F-5038	1,001,853	1,001,853	0	0
San Luis Obispo	CAP of San Luis Obispo County, Inc.	5432500	22F-5039	305,707	305,707	0	0
San Mateo	San Mateo County Human Services Agency	5432000	22F-5040	465,921	465,921	0	0
Santa Barbara	Community Action Commission of Santa Barbara County	5432500	22F-5041	544,516	544,516	136,129	136,129
Santa Clara	Sacred Heart Community Service	5432500	22F-5042	1,454,766	1,454,766	363,692	363,692
Santa Cruz	Community Action Board of Santa Cruz County, Inc.	5432500	22F-5043	298,195	298,195	74,549	74,549
Shasta	Shasta County Community Action Agency	5432000	22F-5044	307,734	307,734	0	0
Sierra	SEE LASSEN COUNTY						
Siskiyou	SEE MODOC COUNTY						
Solano	Community Action Partnership of Solano, JPA	5432000	22F-5045	395,290	395,290	98,823	98,823
Sonoma	Community Action Partnership of Sonoma County	5432500	22F-5046	461,030	461,030	115,258	115,258
Stanislaus	Central Valley Opportunity Center, Inc.	5432500	22F-5047	787,054	787,054	196,764	196,764
Sutter	Sutter County Community Action Agency	5432500	22F-5048	276,561	276,561	69,140	69,140
Tehama	Tehama County Community Action Agency	5432000	22F-5049	293,419	293,419	73,355	73,355
Trinity	SEE GLENN COUNTY						
Tulare	Community Services & Employment Training, Inc.	5432500	22F-5050	923,427	923,427	230,857	230,857
Tuolumne	SEE AMADOR COUNTY						
Ventura	Community Action of Ventura County, Inc.	5432500	22F-5051	700,758	700,758	175,190	175,190
Yolo	County of Yolo Health and Human Services Agency	5432000	22F-5052	302,667	302,667	75,667	75,667
Yuba	Yuba County Community Services Commission	5432000	22F-5053	280,035	280,035	70,009	70,009
TOTAL, all counties				49,860,301	49,860,301	10,095,682	10,095,682



City of Berkeley Housing & Community Services Department
 2180 Milvia Street
 Berkeley, CA 94704
 Contact: Rhianna Babka, RBabka@cityofberkeley.info 510.981.5410

[Return to Main Page](#)

Program: Funding operational expenses for STI and TB screening of Berkeley Residents and Homeless at the Berkeley Free Clinic
 Agency: Berkeley Free Clinic

**City of Berkeley
 Community Agency
 CLIENT CHARACTERISTICS REPORT**

Contract No: 3190025

This Report Due: **Jul 31, 2021**

Agency: Berkeley Free Clinic Period of: **2nd Half 2021**
 Program: Funding operational expenses for STI and TB screer Prepared By: Adam Woodruff
 Phone: 925-528-8860 E-mail: adamw@berkeleyfreeclinic.org.cmo

1. CLIENT SUMMARY - 2nd Half

	2nd Half	YTD
A. Total New Clients Served by the Program (Berkeley and Non-Berkeley)	328	625
B. Total New Berkeley Clients Served for Whom You Were Able to Gather Statistics on Age, Race/Ethnicity, and Income:	36	69
C. Total New Berkeley Clients Served for Whom You Were NOT Able to Gather Statistics on Age, Race/Ethnicity, and Income:	116	213
D. Total New Berkeley Clients Served:	152	282

2. DEMOGRAPHIC DATA

RACE - Unduplicated Count	Previous Periods		Report Period		Year-To-Date	
	Non-Hispanic	Hispanic Ethnicity	Non-Hispanic	Hispanic Ethnicity?	Non-Hispanic	Hispanic Ethnicity
Single Race Categories						
American Indian/Alaskan Native ?	0	0	1	0	1	0
Asian ?	3	0	3	1	6	1
Black/African American ?	2	1	6		8	1
Native Hawaiian/Pacific Islander ?	0	1	2	1	2	2
White ?	13	3	11	2	24	5
Combined Race Categories						
American Indian/Alaskan Native & White	0	0			0	0
Asian & White	0	0			0	0
Black/African American & White	0	0			0	0
American Indian/Alaskan Native & Black/African American	0	0		0	0	0
Other Combined Race Categories	2	8	0	9	2	17
TOTALS	20	13	23	13	43	26
TOTAL SERVED	33		36		69	

3. INCOME LEVEL

Income Level - Unduplicated Count	Previous Periods	This Period	YTD
Poverty	8	7	15
Poverty to 30% of AMI (Ex. Low)	5	28	33
31-50% of AMI (Low)	4	1	5
51-80% of AMI (Moderate)	3	0	3
Above 80% of AMI	13	0	13
TOTALS	33	36	69

[View AMI Table](#)

4. AGE

Age - Unduplicated Count	Previous Periods	This Period	YTD
0-5	0	0	0
6-11	0	0	0
12-17	0	0	0
18-24	10	12	22
25-44	16	23	39
45-54	2	0	2
55-61	2	0	2
62 and Over	3	1	4
Unknown	0	0	0
TOTALS	33	36	69

5. OTHER CHARACTERISTICS

Other Characteristics - Unduplicated Count	Previous Periods	This Period	YTD
Female	37	23	60
Male	68	151	219
Other	17	5	22
Disabled	5	14	19
Homeless	8	15	23
Chronically Homeless	0	0	0
Female Head of Household	0		0

6. SERVICE MEASURES

Service Measures	Annual Goal		1st Half		2nd Half		Served YTD		% Served		
	UOS	New Clients	UOS	New Clients	UOS	# of Existing Clients	New Clients	Total UOS	Total New Clients	UOS	Total Clients
**** Health Care Services - general ****											
1 Healthcare Detection/Screening Services	1,440	1,000	408	130	444		152	852	282	59%	28%
2 AOD Sessions	0	0						0	0		

Service Measure Definitions: [Hide](#)

AOD Sessions	
Healthcare Detection/Screening Services	TB plants and reads are usually around a half an hour, including education, but require prep work and charting which can extend the service time. STI screenings are lengthy, include client histories, blood draws, urine collection, throat, rectal and vaginal sample collection, visual exams, in house laboratory work (urine, discharge, and rapid HIV and HCV testing) charting, client education, and partner communication. TB services are daily, STI services are all but Tuesdays. 764 of 1000 clients will visit for a TB test, and 236 will visit for a comprehensive STI screen.

1st Half Narrative (click to view)

The first half of FY2020-21 saw an increase in patients seen vs 2nd half of 2019-20 with an increase of Berkeley residents. The majority non-Berkely residents were from neighboring cities, such as Oakland with 'the inability to find open services' and 'ease of use' as the primary reason for seeking Berkeley Free Clinic services. We also saw an increase in 'other categories' for demographics like 'female' and 'other' primary due to the implementation of our Saturday Services section telehealth services, and a change within other sections now seeing transgender clients of any gender. We expect the latter to increase as the broadening of this inclusion is more widely known to clients.

2nd Half Narrative

There was a slight increase in both total new clients served and new Berkeley client with a majority of new clients from Berkeley (22). An increase in Berkeley clients corresponds with healthcare access becoming more accessible within Alameda County than at the beginning of the COVID-19 pandemic.

You have 702 characters left.

7. OUTCOMES

Outcomes	Annual Goal	1st Half Achieved Outcome	2nd Half Achieved Outcome	Achieved Outcome YTD	% Achieved Outcome of Annual Goal	% Achieved Outcome of Total Served
1 Participants enrolled in necessary treatment	1,000	130	152	282	28%	100%
2 Average length of time in program	0			0		0%
2 Clients completed AOD program	0			0		0%
2 Clients reduced/eliminated use of AOD substances	0			0		0%

1st Half Narrative (click to view)

In late March 2020, the Clinic closed in-person services due to shelter-in-place orders as a result of the COVID-19 pandemic. During the first half of 2020-21 telehealth services were implemented for 3 medical sections resulting in an uptick in medical outcomes.

2nd Half Narrative

Participants enrolled in necessary treatment increased from the first to the second half in FY2020-21. The increase may be attributed to telehealth programs moving out of a pilot stage and becoming more established in methods and procedures. During the pilot stages of our telehealth programs technology barriers, such as determining the best methods for client accessibility, needed to be determined and may have led to participant enrollment numbers being less in the first half of FY2020-21.

You have 505 characters left.

8. PROGRAM SATISFACTION SURVEY

Question	Strongly Disagree	Disagree	Neutral	Agree	Strongly Agree	Does Not	I Do Not Understand	Total Number of responses
----------	-------------------	----------	---------	-------	----------------	----------	---------------------	---------------------------

							Apply	This Question	
1. I am satisfied with the services I have received from this program.	This Period								0
	Prior Periods	0	0	0	0	0	0	0	0
	Total	0	0	0	0	0	0	0	0
	% of Total								
2. This program's staff treated me with respect.	This Period								0
	Prior Periods	0	0	0	0	0	0	0	0
	Total	0	0	0	0	0	0	0	0
	% of Total								
3. This program helped me make progress towards my goals.	This Period								0
	Prior Periods	0	0	0	0	0	0	0	0
	Total	0	0	0	0	0	0	0	0
	% of Total								
4. This program met my needs.	This Period								0
	Prior Periods	0	0	0	0	0	0	0	0
	Total	0	0	0	0	0	0	0	0
	% of Total								
Additional Questions:									
5. Additional comments from consumers completing the survey									

Select any additional questions (10 Max)

- As a direct result of participating in the program I have what I need to maintain my independence.
- As a direct result of participating in the program my overall health and wellness has improved.
- As a direct result of participating in the program I have what I need to remain housed.
- As a direct result of participating in this program my housing situation has improved.
- As a direct result of participating in the program I have an increased understanding of community resources and supports.
- As a direct result of participating in the program I have enhanced skills and/or knowledge.
- As a direct result of participating in the program I have what I need to achieve my educational goals.
- As a direct result of participating in the program I have what I need to reach my employment goals.
- As a direct result of participating in the program I feel more connected to my community.
- As a direct result of participating in the program I feel less isolated.
- As a direct result of participating in the program my legal rights have been protected.
- As a direct result of participating in the program I am better able to take care of my own needs.
- As a direct result of participating in this program I feel more financially secure.
- As a direct result of participating in the program,
- I certify that the City of Berkeley has approved this question as written**

Update Questions

Report Submitted by: Adam Woodruff

Date: 08/03/2021

Accepted by: Mary-Claire Katz

Date: 08/05/2021

Report modified by:

Modify Report

Reset

Initially submitted: Aug 2, 2021 - 08:43:31

[Return to Reports Page](#)

**CITY OF BERKELEY
COMMUNITY AGENCY STATEMENT OF EXPENSE
04/01/2021 TO 06/30/2021**

Note: Any variation from the Approved Budget exceeding ten percent (10%) requires a Budget Modification Form.

Agency Name: [Berkeley Free Clinic](#) Contract #: [31900252](#)
 Program Name: [Funding operational expenses for STI and TB screening of Berkeley Residents and Homeless at the Berkeley Free Clinic](#) PO #: [TBD](#)

Funding Source :		General Fund							
Expenditure Category	Staff Name	Approved Budget	Jul-Sep 2020	Oct-Dec 2020	Jan-Mar 2021	Apr-Jun 2021	Total Expenditure	Budget Balance	
Operations Support 1	Kyle Gustafson	\$3,171.60	\$792.90	\$792.90	\$792.90	\$792.90	\$3,171.60	\$0.00	
Operations Support 2	Suleiman Allen	\$3,171.60	\$792.90	\$792.90	\$792.90	\$792.90	\$3,171.60	\$0.00	
Operations Support 3	John Day	\$3,171.60	\$792.90	\$792.90	\$792.90	\$792.90	\$3,171.60	\$0.00	
Operations Support 4	Cora Moss	\$3,171.60	\$792.90	\$792.90	\$792.90	\$792.90	\$3,171.60	\$0.00	
Operations Support 5	Adam Woodruff	\$3,171.60	\$0.00	\$0.00	\$1,585.80	\$1,585.80	\$3,171.60	\$0.00	
TOTAL		\$15,858.00	\$3,171.60	\$3,171.60	\$4,757.40	\$4,757.40	\$15,858.00	\$0.00	

Advances Received	\$15,858.00
Underspent/(Overspent)	\$0.00

Explain any staffing changes and/or spending anomalies that do not require a budget modification at this time:

Does your agency expend \$750,000 or more in federal funds? [No](#)

Upload of General Ledger and Summary Income/Expenditure Statement (required):

General Ledger: [General Ledger FY 20-21.xlsx](#)

Summary Income/Expenditure Statement: [Summary Income Expense Statement FY20-21.xlsx](#)

Annual Single Audit:

Other:

- Expenditures reported in this statement are in accordance with our contract agreement and are taken from our books of account which are supported by source documentation.
- All federal and state taxes withheld from employees for this reporting period were remitted to the appropriate government agencies. Furthermore, the employer's share or contributions for Social Security, Medicare, Unemployment and State Disability insurance, and any related government contribution required were remitted as well.

Prepared By: [Adam Woodruff](#)

Email: adamw@berkeleyfreeclinic.org

Date: [09/02/2021](#)

Authorized By: [Scott Carroll](#)

Email: scott@berkeleyfreeclinic.org

Name of Authorized Signatory with Signature on File

Approved By:	Examined By:	Approved By:
Mary-Claire Katz 09/07/2021 Project Manager Date	_____ CSA Fiscal Unit Date	_____ CSA Fiscal Unit Date

Initially submitted: Sep 2, 2021 - 21:18:34

Communication to Council: Distribution of Rent Relief Program Information

A recent study published by the San Francisco Chronicle, with data from the California department of Housing and Community Development, showed that only 7 % of the funds earmarked for COVID-19 rent relief in Alameda County have been distributed. This figure is extremely concerning for a city such as Berkeley with a high percentage of renters. This underutilization could lead to devastating consequences for many Berkeley renters and small landlords as the moratorium on evictions is lifted . We would like to request the council to work with city staff to help ensure that information on applying for relief funds is readily accessible to Berkeley residents. Here are a few ideas:

- Post contact information for the program on a prominent portion of the city of Berkeley website, social media platforms, and email newsletter
- Confirm that information is available through the rent board.
- Add information on the program to each councilpersons' email and print newsletter
 - Send a communication to all Human welfare and community action Agencies asking for their help in sharing information with their clients.

Information Sources:

- [Housing.ca.gov](https://www.housing.ca.gov)
- [1-833-687-0967](tel:1-833-687-0967)
 - Text:"rent" to 211211

We appreciate your help in supporting our community as we continue to deal with the affects of COVID and look forward to your reply.

The Human Welfare and Community Action Commission

Pathways Report Update

According to a Feb 2020 report by compiled by Disability Access Consultants (attached) more than \$300,000 in remedial work and code concerns including building infrastructure, storage, and access issues was recommended for the Pathways Stair Center. Understandably, several groups have expressed interest in seeing what progress had been made in meeting these recommendations.

Unfortunately, requests from one of the members of the HWCAC for information on the status of the recommendations did not receive a complete response. We would like to suggest that a copy of the report (attached) with any written updates on the recommendation be made available to city residents and commissions. This would go a long way in helping people understand the current situation and provide full disclosure to all interested parties.

We appreciate your consideration of this request.

The Human welfare Community action Commission

Accessibility Survey



City of Berkeley Pathways STAIR Center

1601 Second Street
Berkeley, CA 94710

Date of Inspection
2/11/2020

Prepared By
Disability Access Consultants
(800) 743-7067

Pathways STAIR Center

Parking - Exterior : Parking Lot , Warning Signage

Parking Lot

Warning Sign

Parking Lot , Warning Signage : No Parking Lot Warning Sign

Finding

There is no warning signage posted regarding unauthorized use of accessible parking spaces in the parking lot.

On-Site Finding Not Found

Recommendation

Post a sign in a conspicuous place to the entrance of the parking lot, or immediately adjacent to and visible from each accessible parking space. The warning sign shall measure at least 17 inches by 22 inches in size and consist of lettering at least 1 inch in height that clearly and conspicuously states the following; "Unauthorized vehicles parked in designated accessible spaces not displaying distinguishing placards or license plates issued for persons with disabilities will be towed away at owner's expense. Towed vehicles may be reclaimed at ____ or by telephoning ____ ." Fill in the blank spaces with appropriate information as a permanent part of the sign and maintain the currency of the information.



Recommendation See Recommendation

Costing Info (Estimated)

Install post mounted sign \$250

Code Reference CA 11B-502.8

Record Number 50229

Pathways STAIR Center

Parking - Exterior : Parking Lot , Parking Space

Parking Lot

Parking Lot , Parking Space : No Accessible Parking Spaces Available

Finding

There are not enough accessible parking spaces marked in the parking lot and therefore does not meet the minimum number required.

On-Site Finding None Found

Recommendation

Re-stripe any existing parking spaces marked accessible and create additional accessible parking spaces. Designate one parking space as "van-accessible".

Recommendation See Recommendation

Costing Info (Estimated)

Paint ground markings and install a post mounted sign \$370

Code Reference ADA 208, 208.2,CA 11B-208.2,CA 11B-502

Record Number 50321



Path of Travel - Exterior : Path Of Travel , Walking Surfaces

Path from Dining Building to Shelter E Exterior Walkway

Path Of Travel , Walking Surfaces : Walking Surface Cross Slope

Finding

There are cross slopes greater than allowed on the primary path of travel.

On-Site Finding 5.10 percent for 100.00 feet

Recommendation

Provide a compliant path of travel.

Recommendation Up to 2.08 percent

Costing Info (Estimated)

Install pathway \$3,600

Code Reference ADA 402, 403.3,CA 11B-403.3

Record Number 50176



Pathways STAIR Center

Path of Travel - Exterior : Path Of Travel , Walking Surfaces

Path from Restroom Building to Dining Building

Exterior Walkway

Path Of Travel , Walking Surfaces : Walking Surface Cross Slope

Finding

There are cross slopes greater than allowed on the primary path of travel.

On-Site Finding 3.50 percent for 100.00 feet

Recommendation

Provide a compliant path of travel.

Recommendation Up to 2.08 percent

Costing Info (Estimated)

Install pathway \$3,600

Code Reference ADA 402, 403.3,CA 11B-403.3

Record Number 50259



Path of Travel - Exterior : Path Of Travel , Walking Surfaces

Path from the Main Building to Restroom Building

Exterior Walkway

Path Of Travel , Walking Surfaces : Walking Surface Cross Slope

Finding

There are cross slopes greater than allowed on the primary path of travel.

On-Site Finding 4.70 percent for 100.00 feet

Recommendation

Provide a compliant path of travel.

Recommendation Up to 2.08 percent

Costing Info (Estimated)

Install pathway \$3,600

Code Reference ADA 402, 403.3,CA 11B-403.3

Record Number 50213



Pathways STAIR Center

Path of Travel - Exterior : Path Of Travel , Walking Surfaces

Path from the Main Entrance Gate to Main Building

Exterior Walkway

Path Of Travel , Walking Surfaces : Walking Surface Cross Slope

Finding

There are cross slopes greater than allowed on the primary path of travel.

On-Site Finding 5.70 percent for 80.00 feet

Recommendation

Provide a compliant path of travel.

Recommendation Up to 2.08 percent

Costing Info (Estimated)

Install pathway \$3,600

Code Reference ADA 402, 403.3, CA 11B-403.3

Record Number 50079



Path of Travel - Exterior : Path Of Travel , Path Of Travel

Path from the Public Right of Way at Cedar Street

Path Of Travel , Path Of Travel : No Designated Accessible Route

Finding

There is no compliant accessible route from the public right of way to the accessible entrance of the facility.

On-Site Finding None Found

Recommendation

Provide at least one accessible route from the public right of way to the accessible entrance of the facility. Make certain to post signage indicating the direction to accessible building entrances at every major junction along the accessible route. Signs shall include the International Symbol of Accessibility.

Recommendation See Recommendation

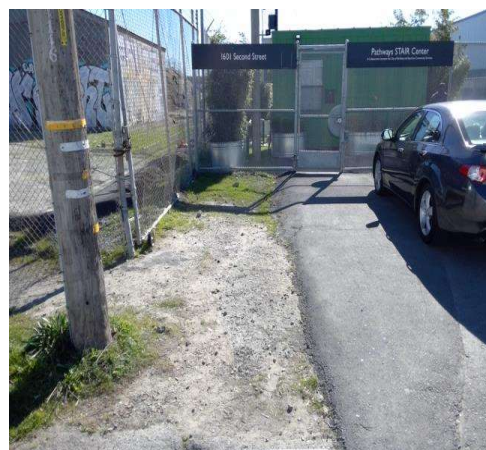
Costing Info (Estimated)

Install Pathway \$1,840

Code Reference ADA 206, 206.2, 402.1

Notes : There Is No Public Sidewalk.

Record Number 50078



Pathways STAIR Center

Ramps - Dining Building : Ramp , Ramp Run

**Ramp to Dining Building
Run 1**

Ramp , Ramp Run : Ramp Run Width

Finding

The width of the ramp is less than required.

On-Site Finding 44.00 inches

Recommendation

Widen the run of the ramp so that it has minimum required width.

Recommendation At least 48.00 inches

Costing Info (Estimated)

Install new ramp \$9,515

Code Reference ADA 405, 405.5,CA 11B-405.5

Record Number 50181



Ramps - Laundry Building : Ramp , Ramp Run

**Ramp to Laundry Building
Run 1**

Ramp , Ramp Run : Ramp Run Width

Finding

The width of the ramp is less than required.

On-Site Finding 43.50 inches

Recommendation

Widen the run of the ramp so that it has minimum required width.

Recommendation At least 48.00 inches

Costing Info (Estimated)

Install new ramp \$9,515

Code Reference ADA 405, 405.5,CA 11B-405.5

Record Number 50110



Pathways STAIR Center**Ramps - Laundry Building : Ramp , Landing****Ramp to Laundry Building****Run 1 Bottom Landing**

Ramp , Landing : Bottom Landing Length

Finding

The length of the bottom landing does not meet the required minimum length.

On-Site Finding 69.00 inches

Recommendation

Modify or replace the bottom landing to provide the required minimum length and width.

Recommendation At least 72.00 inches

Costing Info (Estimated)

Modify ramp landing \$2,872

Code Reference ADA 405, 405.7.3, CA 11B-405.7.3.1

Record Number 50112

**Ramps - Laundry Building : Ramp , Landing****Ramp to Laundry Building****Run 1 Bottom Landing**

Ramp , Landing : Landing Slope

Finding

The slope of the landing is greater than required.

On-Site Finding 3.40 percent

Recommendation

Modify the landing to create a slope in any direction not exceeding the required maximum value.

Recommendation Up to 2.08 percent

Costing Info (Estimated)

Modify ramp landing \$2,872

Code Reference ADA 402, 405.7.1, CA 11B-405.7.1

Record Number 50113



Pathways STAIR Center**Ramps - Laundry Building : Ramp , Landing****Ramp to Laundry Building****Run 1 Intermediate Landing**

Ramp , Landing : Landing Length

Finding

The ramp changes direction at this landing. The length of the landing is less than the required minimum length.

On-Site Finding 71.00 inches

Recommendation

Modify or replace the landing to meet the minimum required width and length.

Recommendation At least 72.00 inches

Costing Info (Estimated)

Modify landing \$2,600

Code Reference ADA 405.7, 405.7.4

Record Number 50111

**Ramps - Laundry Building : Ramp , Ramp Run****Ramp to Laundry Building****Run 2**

Ramp , Ramp Run : Ramp Run Width

Finding

The width of the ramp is less than required.

On-Site Finding 44.50 inches

Recommendation

Widen the run of the ramp so that it has minimum required width.

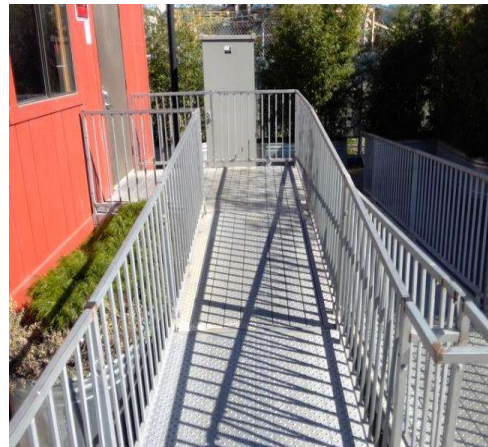
Recommendation At least 48.00 inches

Costing Info (Estimated)

Install new ramp \$9,515

Code Reference ADA 405, 405.5, CA 11B-405.5

Record Number 50116



Pathways STAIR Center**Ramps - Restroom Building : Ramp , Ramp Run****Ramp to Restroom Building****Run 1**

Ramp , Ramp Run : Ramp Run Width

Finding

The width of the ramp is less than required.

On-Site Finding 43.50 inches

Recommendation

Widen the run of the ramp so that it has minimum required width.

Recommendation At least 48.00 inches

Costing Info (Estimated)

Install new ramp \$9,515

Code Reference ADA 405, 405.5, CA 11B-405.5

Record Number 50103

**Ramps - Restroom Building : Ramp , Ramp Run****Ramp to Restroom Building****Run 1**

Ramp , Ramp Run : Ramp Run Slope

Finding

The slope of the ramp is greater than the allowed slope.

On-Site Finding 9.70 percent

Recommendation

Modify the run of the ramp to provide the required slope and cross slope.

Recommendation Up to 8.33 percent

Costing Info (Estimated)

Correct ramp slope \$3,600

Code Reference ADA 405, 405.2, CA 11B-405.2

Record Number 50104



Pathways STAIR Center**Ramps - Restroom Building : Ramp , Landing****Ramp to Restroom Building****Run 1 Intermediate Landing**

Ramp , Landing : Landing Length

Finding

The ramp changes direction at this landing. The length of the landing is less than the required minimum length.

On-Site Finding 71.00 inches

Recommendation

Modify or replace the landing to meet the minimum required width and length.

Recommendation At least 72.00 inches

Costing Info (Estimated)

Modify landing \$2,600

Code Reference ADA 405.7, 405.7.4

Record Number 50105

**Ramps - Restroom Building : Ramp , Ramp Run****Ramp to Restroom Building****Run 2**

Ramp , Ramp Run : Ramp Run Width

Finding

The width of the ramp is less than required.

On-Site Finding 43.50 inches

Recommendation

Widen the run of the ramp so that it has minimum required width.

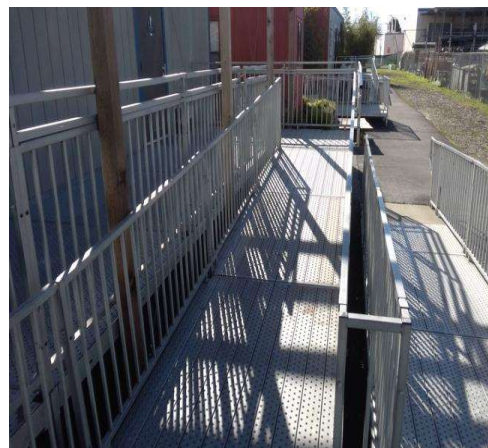
Recommendation At least 48.00 inches

Costing Info (Estimated)

Install new ramp \$9,515

Code Reference ADA 405, 405.5, CA 11B-405.5

Record Number 50098



Pathways STAIR Center

Ramps - Restroom Building : Ramp , Handrail

Ramp to Restroom Building

Run 2 Left Handrail

Ramp , Handrail : Handrail Distance from Wall

Finding

The distance between the handrail and the adjacent wall is not compliant.

On-Site Finding 1.37 inches

Recommendation

Provide compliant handrails on each side.

Recommendation At least 1.50 inches

Costing Info (Estimated)

Provide compliant handrail with extensions \$2,200

Code Reference ADA 405, 405.8, 505.5, CA 11B-505.5

Record Number 50102



Pathways STAIR Center

Ramps - Restroom Building : Ramp , Handrail

Ramp to Restroom Building

Run 2 Right Handrail

Ramp , Handrail : Handrail Extension Length

Finding

There is not enough extension beyond the top or bottom of the rail.

On-Site Finding 10.00 inches

Recommendation

The handrails shall provide extensions that are parallel to the floor or ground surface extending beyond the top and bottom of the ramp and return smoothly to the post or wall.

Recommendation At least 12.00 inches

Costing Info (Estimated)

Provide compliant handrail extensions \$2,400

Code Reference ADA 405, 405.8, 505.10.1,CA 11B-405.8,CA 11B-505.10.1

Record Number 50100



Pathways STAIR Center**Ramps - Security Building : Ramp , Ramp Run****Ramp to Security Building****Run 1**

Ramp , Ramp Run : Ramp Run Width

Finding

The width of the ramp is less than required.

On-Site Finding 43.50 inches

Recommendation

Widen the run of the ramp so that it has minimum required width.

Recommendation At least 48.00 inches

Costing Info (Estimated)

Install new ramp \$9,515

Code Reference ADA 405, 405.5, CA 11B-405.5

Record Number 50154

**Ramps - Security Building : Ramp , Ramp Run****Ramp to Security Building****Run 1**

Ramp , Ramp Run : Ramp Run Slope

Finding

The slope of the ramp is greater than the allowed slope.

On-Site Finding 9.20 percent

Recommendation

Modify the run of the ramp to provide the required slope and cross slope.

Recommendation Up to 8.33 percent

Costing Info (Estimated)

Correct ramp slope \$3,600

Code Reference ADA 405, 405.2, CA 11B-405.2

Record Number 50155



Pathways STAIR Center

Ramps - Shelter B : Ramp , Ramp Run

Ramp to Shelter B

Run 1

Ramp , Ramp Run : Ramp Run Width

Finding

The width of the ramp is less than required.

On-Site Finding 44.00 inches

Recommendation

Widen the run of the ramp so that it has minimum required width.

Recommendation At least 48.00 inches

Costing Info (Estimated)

Install new ramp \$9,515

Code Reference ADA 405, 405.5, CA 11B-405.5

Record Number 50209



Ramps - Shelter B : Ramp , Landing

Ramp to Shelter B

Run 1 Bottom Landing

Ramp , Landing : Landing Slope

Finding

The slope of the landing is greater than required.

On-Site Finding 2.90 percent

Recommendation

Modify the landing to create a slope in any direction not exceeding the required maximum value.

Recommendation Up to 2.08 percent

Costing Info (Estimated)

Modify ramp landing \$2,872

Code Reference ADA 402, 405.7.1, CA 11B-405.7.1

Record Number 50210



Pathways STAIR Center

Ramps - Shelter E : Ramp , Ramp Run

Ramp to Shelter E

Run 1

Ramp , Ramp Run : Ramp Run Width

Finding

The width of the ramp is less than required.

On-Site Finding 44.00 inches

Recommendation

Widen the run of the ramp so that it has minimum required width.

Recommendation At least 48.00 inches

Costing Info (Estimated)

Install new ramp \$9,515

Code Reference ADA 405, 405.5,CA 11B-405.5

Record Number 50267



Ramps - Main Building : Ramp , Ramp Run

Ramp to the Main Building Entrance

Run 1

Ramp , Ramp Run : Ramp Run Width

Finding

The width of the ramp is less than required.

On-Site Finding 43.50 inches

Recommendation

Widen the run of the ramp so that it has minimum required width.

Recommendation At least 48.00 inches

Costing Info (Estimated)

Install new ramp \$9,515

Code Reference ADA 405, 405.5,CA 11B-405.5

Record Number 50281



Pathways STAIR Center**Ramps - Main Building : Ramp , Landing****Ramp to the Main Building Entrance****Run 1 Intermediate Landing**

Ramp , Landing : Landing Length

Finding

The ramp changes direction at this landing. The length of the landing is less than the required minimum length.

On-Site Finding 69.00 inches

Recommendation

Modify or replace the landing to meet the minimum required width and length.

Recommendation At least 72.00 inches

Costing Info (Estimated)

Modify landing \$2,600

Code Reference ADA 405.7, 405.7.4

Record Number 50326

**Ramps - Main Building : Ramp , Ramp Run****Ramp to the Main Building Entrance****Run 2**

Ramp , Ramp Run : Ramp Run Width

Finding

The width of the ramp is less than required.

On-Site Finding 44.50 inches

Recommendation

Widen the run of the ramp so that it has minimum required width.

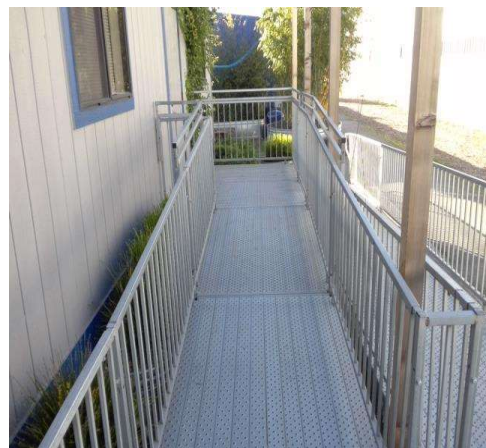
Recommendation At least 48.00 inches

Costing Info (Estimated)

Install new ramp \$9,515

Code Reference ADA 405, 405.5, CA 11B-405.5

Record Number 50286



Pathways STAIR Center**Stairs - Dining Building : Stairway , Run****Stairs to Dining Building****Run 1**

Stairway , Run : Stair Run Width

Finding

The width of the stairway does not meet the minimum required width.

On-Site Finding 36.00 inches

Recommendation

Install a stairway with a minimum width as required.

Recommendation At least 44.00 inches

Costing Info (Estimated)

Modify width \$4,816

Code Reference ADA 210, 504,CA 11B-1009.1,CA 11B-210,CA 11B-504

Record Number 50120

**Stairs - Dining Building : Stairway , Risers****Stairs to Dining Building****Run 1**

Stairway , Risers : Risers Height

Finding

The height of the risers are not uniform.

On-Site Finding Not Uniform

Recommendation

Modify or replace the stairs to provide uniform riser height.

Recommendation See Recommendation

Costing Info (Estimated)

Install stairway \$8,520

Code Reference ADA 504,CA 11B-504.2

Record Number 50121



Pathways STAIR Center

Stairs - Dining Building : Stairway , Risers Striping

Stairs to Dining Building

Run 1

Stairway , Risers Striping : No Riser Striping

Finding

There is no detectable striping on the stairways.

On-Site Finding None Found

Recommendation

Affix compliant contrasting striping to the upper approach and each tread that is the correct width and distance from the nosing.

Recommendation See Recommendation

Costing Info (Estimated)

Add non-slip surface to stair tread \$1,000

Code Reference ADA 504,CA 11B-504.4.1

Record Number 50122



Stairs - Dining Building : Stairway , Risers

Stairs to Dining Building

Run 1

Stairway , Risers : Risers Not Closed

Finding

The risers on the stairway are open.

On-Site Finding Not Closed

Recommendation

Close the riser openings on the stairway. Open risers are not permitted.

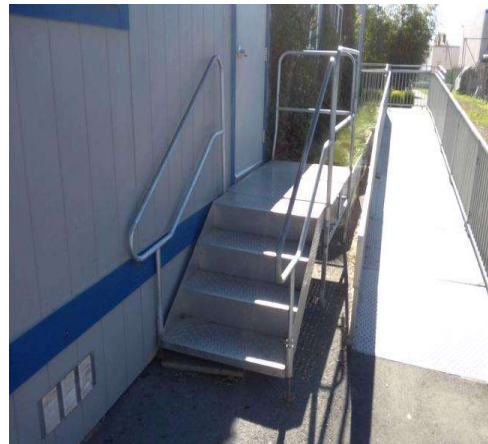
Recommendation See Recommendation

Costing Info (Estimated)

Close risers \$480

Code Reference ADA 504, 504.3,CA 11B-504.3

Record Number 51640



Pathways STAIR Center

Stairs - Dining Building : Stairway , Handrails

Stairs to Dining Building

Run 1 Left Handrail

Stairway , Handrails : Handrail Extension Length

Finding

The top handrail extension is not the required length beyond the top riser.

On-Site Finding 10.00 inches

Recommendation

Install a compliant handrail extension to the top of the handrail that extends beyond the top riser and is parallel to the floor surface of the landing.

Recommendation At least 12.00 inches

Costing Info (Estimated)

Add compliant extension to existing railing \$800

Code Reference ADA 504, 504.6, 505.10.2, CA 11B-505.10.2

Record Number 50128



Pathways STAIR Center

Stairs - Dining Building : Stairway , Handrails

Stairs to Dining Building

Run 1 Left Handrail

Stairway , Handrails : Handrail Extension not Parallel

Finding

The top handrail extension of the stairway is not parallel with the floor surface at the top landing.

On-Site Finding Not Parallel

Recommendation

Install a compliant handrail extension to the top of the handrail that extends beyond the top riser and is parallel to the floor surface of the landing.

Recommendation See Recommendation

Costing Info (Estimated)

Add compliant extension to existing railing \$800

Code Reference ADA 504, 504.6, 505.10.2, CA 11B-505.10.2

Record Number 50129



Pathways STAIR Center**Stairs - Dining Building : Stairway , Handrail****Stairs to Dining Building****Run 1 Left Handrail**

Stairway , Handrail : Handrail Bottom Extension

Finding

The bottom handrail does not extend the depth of one stair tread beyond the bottom step.

On-Site Finding None Found

Recommendation

Provide a compliant handrail extension.

Recommendation See Recommendation

Costing Info (Estimated)

Add compliant extension to existing railing \$1,425

Code Reference ADA 504, 505.10.3, 504.6,
505.10.3,CA 11B-505.10.3

Record Number 50130

**Stairs - Dining Building : Stairway , Handrails****Stairs to Dining Building****Run 1 Left Handrail**

Stairway , Handrails : Handrail Extension not Parallel

Finding

The handrail extension is not parallel with the floor surface at the bottom landing.

On-Site Finding Not Parallel

Recommendation

Install a compliant extension to the handrail.

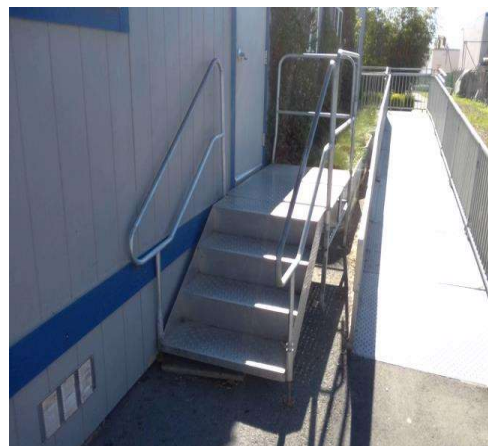
Recommendation See Recommendation

Costing Info (Estimated)

Add compliant extension to existing railing \$627

Code Reference ADA 504,CA 11B-505.10.3

Record Number 50131



Pathways STAIR Center**Stairs - Dining Building : Stairway , Handrails****Stairs to Dining Building****Run 1 Left Handrail**

Stairway , Handrails : Handrail Extension Length

Finding

The handrail extension is not the required length.

On-Site Finding 8.00 inches

Recommendation

Install a compliant extension to the handrail.

Recommendation At least 12.00 inches

Costing Info (Estimated)

Add compliant extension to existing railing \$627

Code Reference ADA 504,CA 11B-505.10.3

Record Number 50132

**Stairs - Dining Building : Stairway , Handrails****Stairs to Dining Building****Run 1 Right Handrail**

Stairway , Handrails : Handrail Extension Length

Finding

The top handrail extension is not the required length beyond the top riser.

On-Site Finding 9.00 inches

Recommendation

Install a compliant handrail extension to the top of the handrail that extends beyond the top riser and is parallel to the floor surface of the landing.

Recommendation At least 12.00 inches

Costing Info (Estimated)

Add compliant extension to existing railing \$800

Code Reference ADA 504, 504.6, 505.10.2,CA 11B-505.10.2

Record Number 50123



Pathways STAIR Center

Stairs - Dining Building : Stairway , Handrails

Stairs to Dining Building

Run 1 Right Handrail

Stairway , Handrails : Handrail Extension not Parallel

Finding

The top handrail extension of the stairway is not parallel with the floor surface at the top landing.

On-Site Finding Not Parallel

Recommendation

Install a compliant handrail extension to the top of the handrail that extends beyond the top riser and is parallel to the floor surface of the landing.

Recommendation See Recommendation

Costing Info (Estimated)

Add compliant extension to existing railing \$800

Code Reference ADA 504, 504.6, 505.10.2, CA 11B-505.10.2

Record Number 50124



Pathways STAIR Center

Stairs - Dining Building : Stairway , Handrail

Stairs to Dining Building

Run 1 Right Handrail

Stairway , Handrail : Handrail Bottom Extension

Finding

The bottom handrail does not extend the depth of one stair tread beyond the bottom step.

On-Site Finding None Found

Recommendation

Provide a compliant handrail extension.

Recommendation See Recommendation

Costing Info (Estimated)

Add compliant extension to existing railing \$1,425

Code Reference ADA 504, 505.10.3, 504.6, 505.10.3,CA 11B-505.10.3

Record Number 50125



Pathways STAIR Center**Stairs - Dining Building : Stairway , Handrails****Stairs to Dining Building****Run 1 Right Handrail**

Stairway , Handrails : Handrail Extension not Parallel

Finding

The handrail extension is not parallel with the floor surface at the bottom landing.

On-Site Finding Not Parallel

Recommendation

Install a compliant extension to the handrail.

Recommendation See Recommendation

Costing Info (Estimated)

Add compliant extension to existing railing \$627

Code Reference ADA 504,CA 11B-505.10.3

Record Number 50126

**Stairs - Dining Building : Stairway , Handrails****Stairs to Dining Building****Run 1 Right Handrail**

Stairway , Handrails : Handrail Extension Length

Finding

The handrail extension is not the required length.

On-Site Finding 8.00 inches

Recommendation

Install a compliant extension to the handrail.

Recommendation At least 12.00 inches

Costing Info (Estimated)

Add compliant extension to existing railing \$627

Code Reference ADA 504,CA 11B-505.10.3

Record Number 50127



Pathways STAIR Center

Stairs - Main Building : Stairway , Run

Stairs to Main Building

Run 1

Stairway , Run : Stair Run Width

Finding

The width of the stairway does not meet the minimum required width.

On-Site Finding 36.50 inches

Recommendation

Install a stairway with a minimum width as required.

Recommendation At least 44.00 inches

Costing Info (Estimated)

Modify width \$4,816

Code Reference ADA 210, 504,CA 11B-1009.1,CA 11B-210,CA 11B-504

Record Number 50135



Stairs - Main Building : Stairway , Risers

Stairs to Main Building

Run 1

Stairway , Risers : Risers Height

Finding

The height of the risers are not uniform.

On-Site Finding Not Uniform

Recommendation

Modify or replace the stairs to provide uniform riser height.

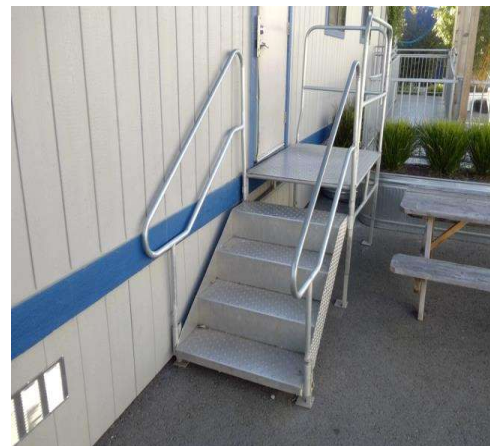
Recommendation See Recommendation

Costing Info (Estimated)

Install stairway \$8,520

Code Reference ADA 504,CA 11B-504.2

Record Number 50136



Pathways STAIR Center

Stairs - Main Building : Stairway , Risers Striping

Stairs to Main Building

Run 1

Stairway , Risers Striping : No Riser Striping

Finding

There is no detectable striping on the stairways.

On-Site Finding None Found

Recommendation

Affix compliant contrasting striping to the upper approach and each tread that is the correct width and distance from the nosing.

Recommendation See Recommendation

Costing Info (Estimated)

Add non-slip surface to stair tread \$1,000

Code Reference ADA 504,CA 11B-504.4.1

Record Number 50137



Stairs - Main Building : Stairway , Risers

Stairs to Main Building

Run 1

Stairway , Risers : Risers Not Closed

Finding

The risers on the stairway are open.

On-Site Finding Not Closed

Recommendation

Close the riser openings on the stairway. Open risers are not permitted.

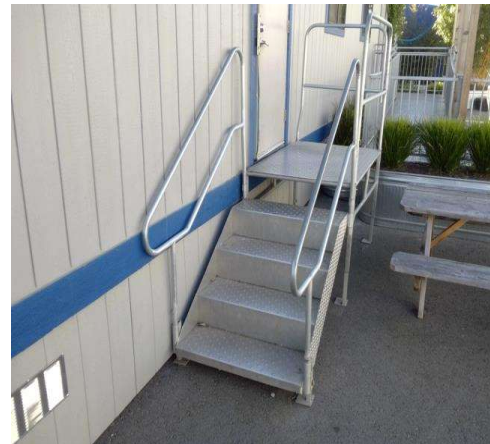
Recommendation See Recommendation

Costing Info (Estimated)

Close risers \$480

Code Reference ADA 504, 504.3,CA 11B-504.3

Record Number 51641



Pathways STAIR Center

Stairs - Main Building : Stairway , Handrails

Stairs to Main Building

Run 1 Left Handrail

Stairway , Handrails : No Top Handrail Extension

Finding

There are no top handrail extensions provided on the stairway.

On-Site Finding None Found

Recommendation

Install handrail extension to the top of the handrail that extends beyond the top riser and is parallel to the floor surface at the top landing.

Recommendation See Recommendation

Costing Info (Estimated)

Add compliant extension to existing railing \$1,425

Code Reference ADA 504, 505.10.1, 504.6, 505.10.2,CA 11B-505.10.2

Record Number 50138



Pathways STAIR Center

Stairs - Main Building : Stairway , Handrails

Stairs to Main Building

Run 1 Left Handrail

Stairway , Handrails : Handrail Distance From Wall

Finding

The distance between the handrail and the wall on the stairway is less than required.

On-Site Finding 1.25 inches

Recommendation

Remount the handrails on the stairway so that the distance from the handrail to the adjacent wall is compliant.

Recommendation At least 1.50 inches

Costing Info (Estimated)

Add compliant handrail \$1,916

Code Reference ADA 504, 505.5, 504.6, CA 11B-505.5

Record Number 50139



Pathways STAIR Center**Stairs - Main Building : Stairway , Handrail**

Stairs to Main Building**Run 1 Left Handrail**

Stairway , Handrail : Handrail Bottom Extension

Finding

The bottom handrail does not extend the depth of one stair tread beyond the bottom step.

On-Site Finding None Found

Recommendation

Provide a compliant handrail extension.

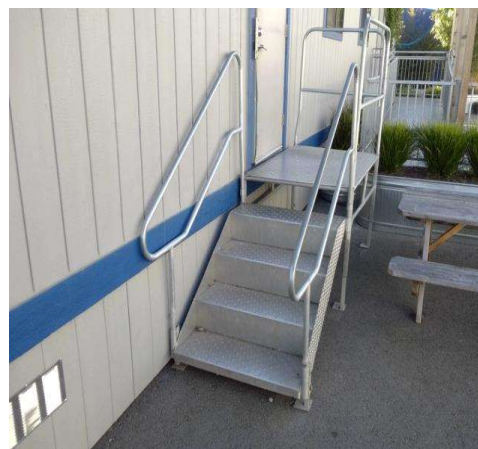
Recommendation See Recommendation

Costing Info (Estimated)

Add compliant extension to existing railing \$1,425

Code Reference ADA 504, 505.10.3, 504.6,
505.10.3,CA 11B-505.10.3

Record Number 50140

**Stairs - Main Building : Stairway , Handrails**

Stairs to Main Building**Run 1 Left Handrail**

Stairway , Handrails : Handrail Extension not Parallel

Finding

The handrail extension is not parallel with the floor surface at the bottom landing.

On-Site Finding Not Parallel

Recommendation

Install a compliant extension to the handrail.

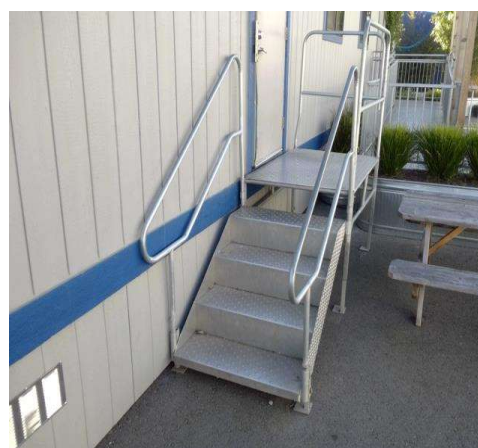
Recommendation See Recommendation

Costing Info (Estimated)

Add compliant extension to existing railing \$627

Code Reference ADA 504,CA 11B-505.10.3

Record Number 50141



Pathways STAIR Center**Stairs - Main Building : Stairway , Handrails****Stairs to Main Building****Run 1 Left Handrail**

Stairway , Handrails : Handrail Extension Length

Finding

The handrail extension is not the required length.

On-Site Finding 8.00 inches

Recommendation

Install a compliant extension to the handrail.

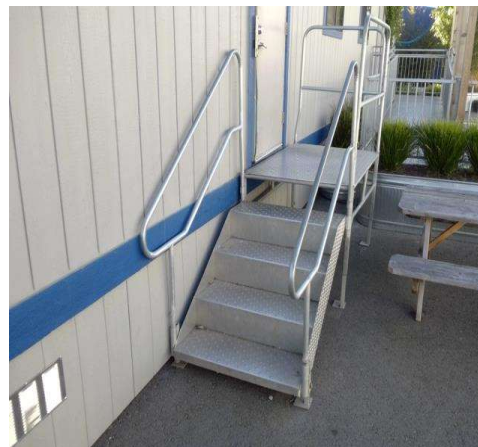
Recommendation At least 12.00 inches

Costing Info (Estimated)

Add compliant extension to existing railing \$627

Code Reference ADA 504,CA 11B-505.10.3

Record Number 50142

**Stairs - Main Building : Stairway , Handrails****Stairs to Main Building****Run 1 Right Handrail**

Stairway , Handrails : No Top Handrail Extension

Finding

There are no top handrail extensions provided on the stairway.

On-Site Finding None Found

Recommendation

Install handrail extension to the top of the handrail that extends beyond the top riser and is parallel to the floor surface at the top landing.

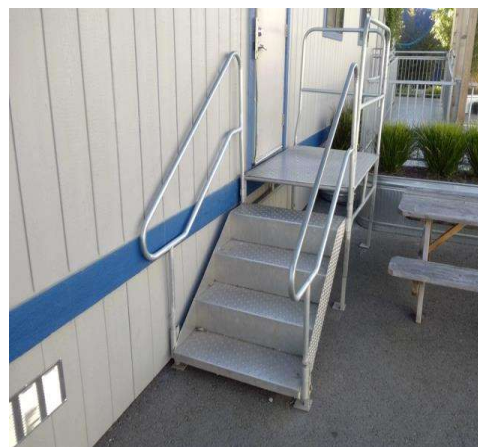
Recommendation See Recommendation

Costing Info (Estimated)

Add compliant extension to existing railing \$1,425

Code Reference ADA 504, 505.10.1, 504.6, 505.10.2,CA 11B-505.10.2

Record Number 50144



Pathways STAIR Center

Stairs - Main Building : Stairway , Handrail

Stairs to Main Building

Run 1 Right Handrail

Stairway , Handrail : Handrail Bottom Extension

Finding

The bottom handrail does not extend the depth of one stair tread beyond the bottom step.

On-Site Finding None Found

Recommendation

Provide a compliant handrail extension.

Recommendation See Recommendation

Costing Info (Estimated)

Add compliant extension to existing railing \$1,425

Code Reference ADA 504, 505.10.3, 504.6, 505.10.3,CA 11B-505.10.3

Record Number 50145



Stairs - Main Building : Stairway , Handrails

Stairs to Main Building

Run 1 Right Handrail

Stairway , Handrails : Handrail Extension not Parallel

Finding

The handrail extension is not parallel with the floor surface at the bottom landing.

On-Site Finding Not Parallel

Recommendation

Install a compliant extension to the handrail.

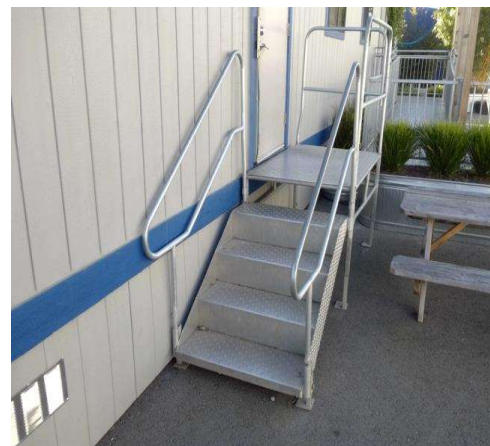
Recommendation See Recommendation

Costing Info (Estimated)

Add compliant extension to existing railing \$627

Code Reference ADA 504,CA 11B-505.10.3

Record Number 50146



Pathways STAIR Center

Stairs - Main Building : Stairway , Handrails

Stairs to Main Building

Run 1 Right Handrail

Stairway , Handrails : Handrail Extension Length

Finding

The handrail extension is not the required length.

On-Site Finding 8.00 inches

Recommendation

Install a compliant extension to the handrail.

Recommendation At least 12.00 inches

Costing Info (Estimated)

Add compliant extension to existing railing \$627

Code Reference ADA 504,CA 11B-505.10.3

Record Number 50147



Stairs - Shelter B : Stairway , Run

Stairs to Shelter B

Run 1

Stairway , Run : Stair Run Width

Finding

The width of the stairway does not meet the minimum required width.

On-Site Finding 36.00 inches

Recommendation

Install a stairway with a minimum width as required.

Recommendation At least 44.00 inches

Costing Info (Estimated)

Modify width \$4,816

Code Reference ADA 210, 504,CA 11B-1009.1,CA 11B-210,CA 11B-504

Record Number 50240



Pathways STAIR Center

Stairs - Shelter B : Stairway , Risers

Stairs to Shelter B

Run 1

Stairway , Risers : Risers Height

Finding

The height of the risers are not uniform.

On-Site Finding Not Uniform

Recommendation

Modify or replace the stairs to provide uniform riser height.

Recommendation See Recommendation

Costing Info (Estimated)

Install stairway \$8,520

Code Reference ADA 504,CA 11B-504.2

Record Number 50242



Stairs - Shelter B : Stairway , Risers Striping

Stairs to Shelter B

Run 1

Stairway , Risers Striping : No Riser Striping

Finding

There is no detectable striping on the stairways.

On-Site Finding None Found

Recommendation

Affix compliant contrasting striping to the upper approach and each tread that is the correct width and distance from the nosing.

Recommendation See Recommendation

Costing Info (Estimated)

Add non-slip surface to stair tread \$1,000

Code Reference ADA 504,CA 11B-504.4.1

Record Number 50243



Pathways STAIR Center

Stairs - Shelter B : Stairway , Risers

Stairs to Shelter B

Run 1

Stairway , Risers : Risers Not Closed

Finding

The risers on the stairway are open.

On-Site Finding Not Closed

Recommendation

Close the riser openings on the stairway. Open risers are not permitted.

Recommendation See Recommendation

Costing Info (Estimated)

Close risers \$480

Code Reference ADA 504, 504.3, CA 11B-504.3

Record Number 51650



Stairs - Shelter B : Stairway , Handrails

Stairs to Shelter B

Run 1 Left Handrail

Stairway , Handrails : Handrail Distance From Wall

Finding

The distance between the handrail and the wall on the stairway is less than required.

On-Site Finding 1.25 inches

Recommendation

Remount the handrails on the stairway so that the distance from the handrail to the adjacent wall is compliant.

Recommendation At least 1.50 inches

Costing Info (Estimated)

Add compliant handrail \$1,916

Code Reference ADA 504, 505.5, 504.6, CA 11B-505.5

Record Number 50244



Pathways STAIR Center

Stairs - Shelter B : Stairway , Handrails

Stairs to Shelter B

Run 1 Left Handrail

Stairway , Handrails : Handrail Extension Length

Finding

The top handrail extension is not the required length beyond the top riser.

On-Site Finding 10.00 inches

Recommendation

Install a compliant handrail extension to the top of the handrail that extends beyond the top riser and is parallel to the floor surface of the landing.

Recommendation At least 12.00 inches

Costing Info (Estimated)

Add compliant extension to existing railing \$800

Code Reference ADA 504, 504.6, 505.10.2, CA 11B-505.10.2

Record Number 50245



Pathways STAIR Center

Stairs - Shelter B : Stairway , Handrails

Stairs to Shelter B

Run 1 Left Handrail

Stairway , Handrails : Handrail Extension not Parallel

Finding

The top handrail extension of the stairway is not parallel with the floor surface at the top landing.

On-Site Finding Not Parallel

Recommendation

Install a compliant handrail extension to the top of the handrail that extends beyond the top riser and is parallel to the floor surface of the landing.

Recommendation See Recommendation

Costing Info (Estimated)

Add compliant extension to existing railing \$800

Code Reference ADA 504, 504.6, 505.10.2, CA 11B-505.10.2

Record Number 50246



Pathways STAIR Center

Stairs - Shelter B : Stairway , Handrail

Stairs to Shelter B

Run 1 Left Handrail

Stairway , Handrail : Handrail Bottom Extension

Finding

The bottom handrail does not extend the depth of one stair tread beyond the bottom step.

On-Site Finding None Found

Recommendation

Provide a compliant handrail extension.

Recommendation See Recommendation

Costing Info (Estimated)

Add compliant extension to existing railing \$1,425

Code Reference ADA 504, 505.10.3, 504.6, 505.10.3,CA 11B-505.10.3

Record Number 50247



Stairs - Shelter B : Stairway , Handrails

Stairs to Shelter B

Run 1 Left Handrail

Stairway , Handrails : Handrail Extension not Parallel

Finding

The handrail extension is not parallel with the floor surface at the bottom landing.

On-Site Finding Not Parallel

Recommendation

Install a compliant extension to the handrail.

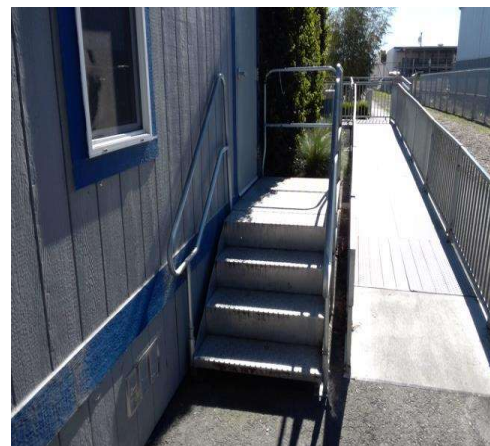
Recommendation See Recommendation

Costing Info (Estimated)

Add compliant extension to existing railing \$627

Code Reference ADA 504,CA 11B-505.10.3

Record Number 50248



Pathways STAIR Center**Stairs - Shelter B : Stairway , Handrails****Stairs to Shelter B****Run 1 Left Handrail**

Stairway , Handrails : Handrail Extension Length

Finding

The handrail extension is not the required length.

On-Site Finding 8.00 inches

Recommendation

Install a compliant extension to the handrail.

Recommendation At least 12.00 inches

Costing Info (Estimated)

Add compliant extension to existing railing \$627

Code Reference ADA 504,CA 11B-505.10.3

Record Number 50249

**Stairs - Shelter B : Stairway , Handrails****Stairs to Shelter B****Run 1 Right Handrail**

Stairway , Handrails : Handrail Extension Length

Finding

The top handrail extension is not the required length beyond the top riser.

On-Site Finding 10.00 inches

Recommendation

Install a compliant handrail extension to the top of the handrail that extends beyond the top riser and is parallel to the floor surface of the landing.

Recommendation At least 12.00 inches

Costing Info (Estimated)

Add compliant extension to existing railing \$800

Code Reference ADA 504, 504.6, 505.10.2,CA 11B-505.10.2

Record Number 50250



Pathways STAIR Center

Stairs - Shelter B : Stairway , Handrails

Stairs to Shelter B

Run 1 Right Handrail

Stairway , Handrails : Handrail Extension not Parallel

Finding

The top handrail extension of the stairway is not parallel with the floor surface at the top landing.

On-Site Finding Not Parallel

Recommendation

Install a compliant handrail extension to the top of the handrail that extends beyond the top riser and is parallel to the floor surface of the landing.

Recommendation See Recommendation

Costing Info (Estimated)

Add compliant extension to existing railing \$800

Code Reference ADA 504, 504.6, 505.10.2, CA 11B-505.10.2

Record Number 50251



Pathways STAIR Center

Stairs - Shelter B : Stairway , Handrail

Stairs to Shelter B

Run 1 Right Handrail

Stairway , Handrail : Handrail Bottom Extension

Finding

The bottom handrail does not extend the depth of one stair tread beyond the bottom step.

On-Site Finding None Found

Recommendation

Provide a compliant handrail extension.

Recommendation See Recommendation

Costing Info (Estimated)

Add compliant extension to existing railing \$1,425

Code Reference ADA 504, 505.10.3, 504.6, 505.10.3,CA 11B-505.10.3

Record Number 50252



Pathways STAIR Center

Stairs - Shelter B : Stairway , Handrails

Stairs to Shelter B

Run 1 Right Handrail

Stairway , Handrails : Handrail Extension not Parallel

Finding

The handrail extension is not parallel with the floor surface at the bottom landing.

On-Site Finding Not Parallel

Recommendation

Install a compliant extension to the handrail.

Recommendation See Recommendation

Costing Info (Estimated)

Add compliant extension to existing railing \$627

Code Reference ADA 504,CA 11B-505.10.3

Record Number 50253



Stairs - Shelter B : Stairway , Handrails

Stairs to Shelter B

Run 1 Right Handrail

Stairway , Handrails : Handrail Extension Length

Finding

The handrail extension is not the required length.

On-Site Finding 8.00 inches

Recommendation

Install a compliant extension to the handrail.

Recommendation At least 12.00 inches

Costing Info (Estimated)

Add compliant extension to existing railing \$627

Code Reference ADA 504,CA 11B-505.10.3

Record Number 50254



Pathways STAIR Center**Stairs - Shelter E : Stairway , Run****Stairs to Shelter E****Run 1**

Stairway , Run : Stair Run Width

Finding

The width of the stairway does not meet the minimum required width.

On-Site Finding 36.00 inches

Recommendation

Install a stairway with a minimum width as required.

Recommendation At least 44.00 inches

Costing Info (Estimated)

Modify width \$4,816

Code Reference ADA 210, 504,CA 11B-1009.1,CA 11B-210,CA 11B-504

Record Number 50191

**Stairs - Shelter E : Stairway , Risers****Stairs to Shelter E****Run 1**

Stairway , Risers : Risers Height

Finding

The height of the risers are not uniform.

On-Site Finding Not Uniform

Recommendation

Modify or replace the stairs to provide uniform riser height.

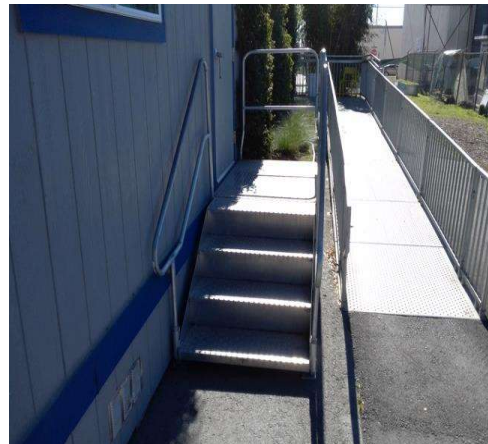
Recommendation See Recommendation

Costing Info (Estimated)

Install stairway \$8,520

Code Reference ADA 504,CA 11B-504.2

Record Number 50192



Pathways STAIR Center

Stairs - Shelter E : Stairway , Risers Striping

Stairs to Shelter E

Run 1

Stairway , Risers Striping : No Riser Striping

Finding

There is no detectable striping on the stairways.

On-Site Finding None Found

Recommendation

Affix compliant contrasting striping to the upper approach and each tread that is the correct width and distance from the nosing.

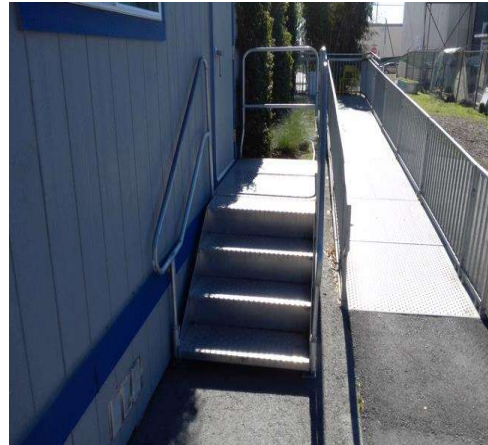
Recommendation See Recommendation

Costing Info (Estimated)

Add non-slip surface to stair tread \$1,000

Code Reference ADA 504,CA 11B-504.4.1

Record Number 50193



Stairs - Shelter E : Stairway , Risers

Stairs to Shelter E

Run 1

Stairway , Risers : Risers Not Closed

Finding

The risers on the stairway are open.

On-Site Finding Not Closed

Recommendation

Close the riser openings on the stairway. Open risers are not permitted.

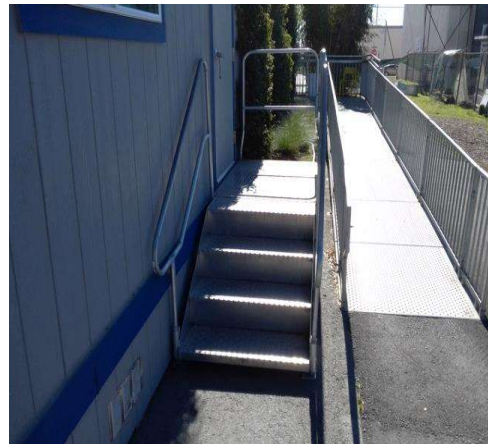
Recommendation See Recommendation

Costing Info (Estimated)

Close risers \$480

Code Reference ADA 504, 504.3,CA 11B-504.3

Record Number 51647



Pathways STAIR Center

Stairs - Shelter E : Stairway , Handrails

Stairs to Shelter E

Run 1 Left Handrail

Stairway , Handrails : Handrail Extension Length

Finding

The top handrail extension is not the required length beyond the top riser.

On-Site Finding 10.00 inches

Recommendation

Install a compliant handrail extension to the top of the handrail that extends beyond the top riser and is parallel to the floor surface of the landing.

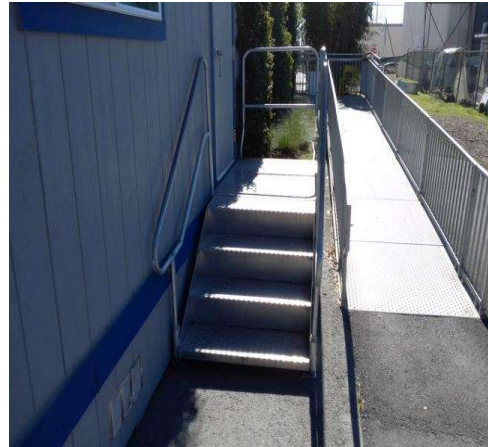
Recommendation At least 12.00 inches

Costing Info (Estimated)

Add compliant extension to existing railing \$800

Code Reference ADA 504, 504.6, 505.10.2, CA 11B-505.10.2

Record Number 50199



Pathways STAIR Center

Stairs - Shelter E : Stairway , Handrails

Stairs to Shelter E

Run 1 Left Handrail

Stairway , Handrails : Handrail Extension not Parallel

Finding

The top handrail extension of the stairway is not parallel with the floor surface at the top landing.

On-Site Finding Not Parallel

Recommendation

Install a compliant handrail extension to the top of the handrail that extends beyond the top riser and is parallel to the floor surface of the landing.

Recommendation See Recommendation

Costing Info (Estimated)

Add compliant extension to existing railing \$800

Code Reference ADA 504, 504.6, 505.10.2, CA 11B-505.10.2

Record Number 50200



Pathways STAIR Center

Stairs - Shelter E : Stairway , Handrail

Stairs to Shelter E

Run 1 Left Handrail

Stairway , Handrail : Handrail Bottom Extension

Finding

The bottom handrail does not extend the depth of one stair tread beyond the bottom step.

On-Site Finding None Found

Recommendation

Provide a compliant handrail extension.

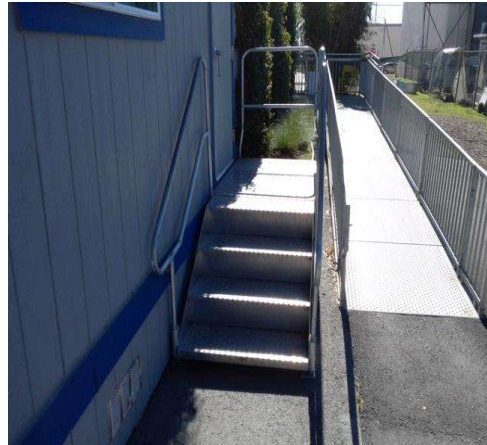
Recommendation See Recommendation

Costing Info (Estimated)

Add compliant extension to existing railing \$1,425

Code Reference ADA 504, 505.10.3, 504.6, 505.10.3,CA 11B-505.10.3

Record Number 50201



Stairs - Shelter E : Stairway , Handrails

Stairs to Shelter E

Run 1 Left Handrail

Stairway , Handrails : Handrail Extension not Parallel

Finding

The handrail extension is not parallel with the floor surface at the bottom landing.

On-Site Finding Not Parallel

Recommendation

Install a compliant extension to the handrail.

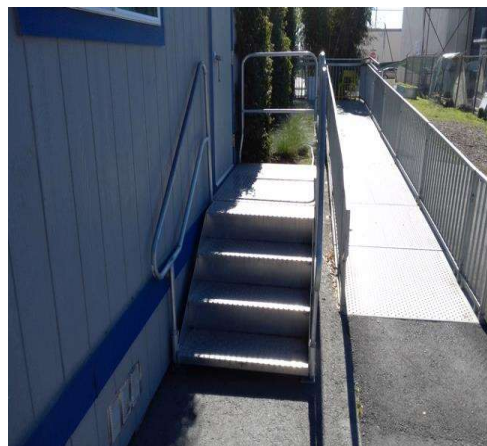
Recommendation See Recommendation

Costing Info (Estimated)

Add compliant extension to existing railing \$627

Code Reference ADA 504,CA 11B-505.10.3

Record Number 50202



Pathways STAIR Center**Stairs - Shelter E : Stairway , Handrails****Stairs to Shelter E****Run 1 Left Handrail**

Stairway , Handrails : Handrail Extension Length

Finding

The handrail extension is not the required length.

On-Site Finding 8.00 inches

Recommendation

Install a compliant extension to the handrail.

Recommendation At least 12.00 inches

Costing Info (Estimated)

Add compliant extension to existing railing \$627

Code Reference ADA 504,CA 11B-505.10.3

Record Number 50203

**Stairs - Shelter E : Stairway , Handrails****Stairs to Shelter E****Run 1 Right Handrail**

Stairway , Handrails : Handrail Extension Length

Finding

The top handrail extension is not the required length beyond the top riser.

On-Site Finding 10.00 inches

Recommendation

Install a compliant handrail extension to the top of the handrail that extends beyond the top riser and is parallel to the floor surface of the landing.

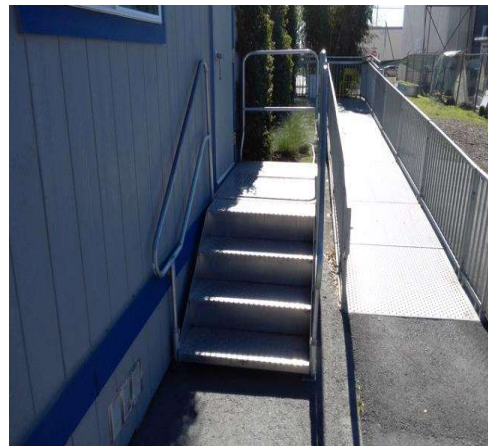
Recommendation At least 12.00 inches

Costing Info (Estimated)

Add compliant extension to existing railing \$800

Code Reference ADA 504, 504.6, 505.10.2,CA 11B-505.10.2

Record Number 50194



Pathways STAIR Center

Stairs - Shelter E : Stairway , Handrails

Stairs to Shelter E

Run 1 Right Handrail

Stairway , Handrails : Handrail Extension not Parallel

Finding

The top handrail extension of the stairway is not parallel with the floor surface at the top landing.

On-Site Finding Not Parallel

Recommendation

Install a compliant handrail extension to the top of the handrail that extends beyond the top riser and is parallel to the floor surface of the landing.

Recommendation See Recommendation

Costing Info (Estimated)

Add compliant extension to existing railing \$800

Code Reference ADA 504, 504.6, 505.10.2, CA 11B-505.10.2

Record Number 50195



Pathways STAIR Center

Stairs - Shelter E : Stairway , Handrail

Stairs to Shelter E

Run 1 Right Handrail

Stairway , Handrail : Handrail Bottom Extension

Finding

The bottom handrail does not extend the depth of one stair tread beyond the bottom step.

On-Site Finding None Found

Recommendation

Provide a compliant handrail extension.

Recommendation See Recommendation

Costing Info (Estimated)

Add compliant extension to existing railing \$1,425

Code Reference ADA 504, 505.10.3, 504.6, 505.10.3,CA 11B-505.10.3

Record Number 50196



Pathways STAIR Center**Stairs - Shelter E : Stairway , Handrails****Stairs to Shelter E****Run 1 Right Handrail**

Stairway , Handrails : Handrail Extension not Parallel

Finding

The handrail extension is not parallel with the floor surface at the bottom landing.

On-Site Finding Not Parallel

Recommendation

Install a compliant extension to the handrail.

Recommendation See Recommendation

Costing Info (Estimated)

Add compliant extension to existing railing \$627

Code Reference ADA 504,CA 11B-505.10.3

Record Number 50197

**Stairs - Shelter E : Stairway , Handrails****Stairs to Shelter E****Run 1 Right Handrail**

Stairway , Handrails : Handrail Extension Length

Finding

The handrail extension is not the required length.

On-Site Finding 8.00 inches

Recommendation

Install a compliant extension to the handrail.

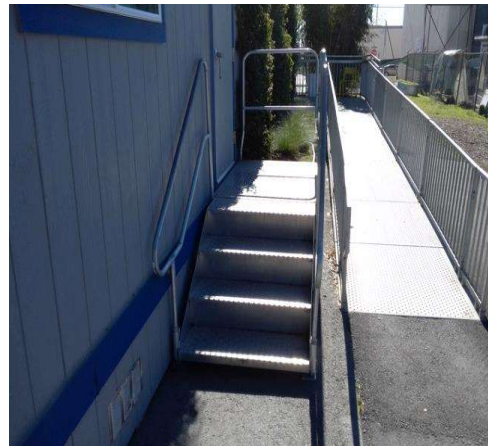
Recommendation At least 12.00 inches

Costing Info (Estimated)

Add compliant extension to existing railing \$627

Code Reference ADA 504,CA 11B-505.10.3

Record Number 50198



Pathways STAIR Center**Doors - Main Building : Door , Hardware**

Break Room - Main Building**Lever**

Door , Hardware : Door Lock

Finding

The door lock requires tight grasping, pinching, or twisting of the wrist to operate.

On-Site Finding Not Accessible

Recommendation

Provide a compliant door lock for the door that does not require tight grasping, pinching, or twisting of the wrist to operate.

Recommendation See Recommendation

Costing Info (Estimated)

Provide door lock \$310

Code Reference ADA 404.2.7, 309.4

Record Number 50178

**Doors - Dining Building : Door , Threshold**

Dining Building Entrance from Stairs

Door , Threshold : Door Threshold

Finding

The height of the threshold at the entrance door is greater than allowed.

On-Site Finding 0.75 inches

Recommendation

Modify or replace the threshold to provide the recommended height.

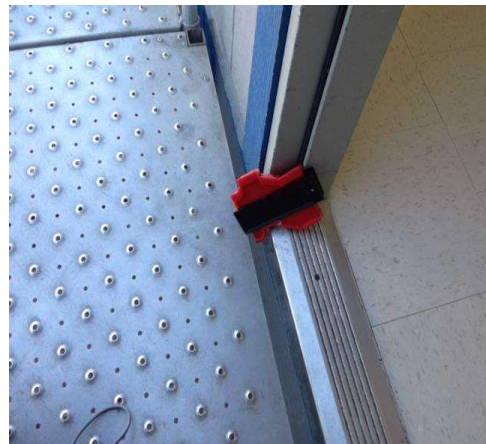
Recommendation Up to 0.50 inches

Costing Info (Estimated)

Provide smooth transition \$436

Code Reference ADA 404, 404.2.5, CA 11B-404.2.5

Record Number 50273



Pathways STAIR Center**Doors - Dining Building : Door , Latch Side Clearance**

Dining Building Entrance from Stairs**Pull Side**Door , Latch Side Clearance : Front Approach
Latch Side Clearance**Finding**

There is less than the required latch side clearance on the pull side of the door.

On-Site Finding 19.00 inches

Recommendation

Provide required latch side clearance on the pull side of the door.

Recommendation At least 24.00 inches

Costing Info (Estimated)

Install automatic door opener \$2,921

Code Reference ADA 404, 404.2.4, CA 11B-404.2.4.1

Record Number 50274

**Doors - Dining Building : Door , Clear Floor Space**

Dining Building Entrance from Stairs**Pull Side**Door , Clear Floor Space : Front Approach Clear
Floor Space Length**Finding**

There is not enough clear floor space provided at the pull side of the door.

On-Site Finding 40.00 inches

Recommendation

Provide the recommended clear floor space on the pull side of the door.

Recommendation At least 60.00 inches

Costing Info (Estimated)

Install automatic door opener \$2,921

Code Reference ADA 404, 404.2.4, CA 11B-404.2.4

Record Number 50275



Pathways STAIR Center**Doors - Dining Building : Door , Hardware****Dining Building Entrance from Stairs****Push Bar / Lever**

Door , Hardware : Door Opening Pressure

Finding

The door opening force for this door is greater than allowed.

On-Site Finding 8.00 pounds

Recommendation

Adjust the closer on the door to meet the door opening force requirements.

Recommendation Up to 5.00 pounds

Costing Info (Estimated)

Adjust door closer pressure \$25

Code Reference ADA 404.2.9,CA 11B-404.2.9

Record Number 50272

**Doors - Dining Building : Door****Dining Building Entrance from Stairs**

Door : Door Closer Vertical Clearance

Finding

The door closing device limits the required headroom clearance.

On-Site Finding 77.25 inches

Recommendation

Replace the door closing device with a device that fits above the door casing and does not protrude into the primary path of travel.

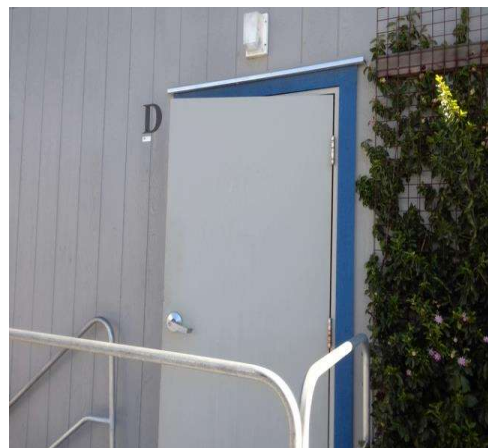
Recommendation At least 78.00 inches

Costing Info (Estimated)

Install new door opener \$250

Code Reference ADA 404, 404.2.3,CA 11B-404.2.3

Record Number 50270



Pathways STAIR Center**Doors - Dining Building : Door , Hardware**

Main Entrance - Dining Building**Push Bar / Lever**

Door , Hardware : Door Opening Pressure

Finding

The door opening force for this door is greater than allowed.

On-Site Finding 7.00 pounds

Recommendation

Adjust the closer on the door to meet the door opening force requirements.

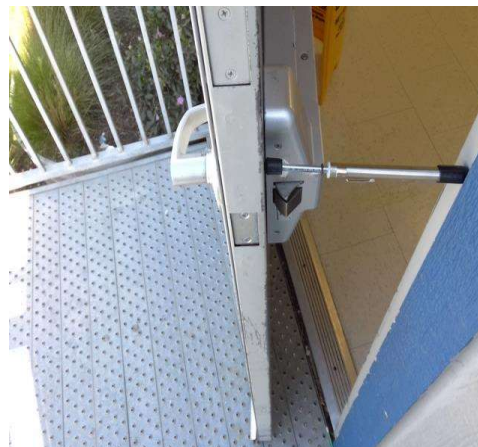
Recommendation Up to 5.00 pounds

Costing Info (Estimated)

Adjust door closer pressure \$25

Code Reference ADA 404.2.9,CA 11B-404.2.9

Record Number 50261

**Doors - Dining Building : Door , Threshold**

Main Entrance - Dining Building

Door , Threshold : Door Threshold

Finding

The height of the threshold at the entrance door is greater than allowed.

On-Site Finding 0.75 inches

Recommendation

Modify or replace the threshold to provide the recommended height.

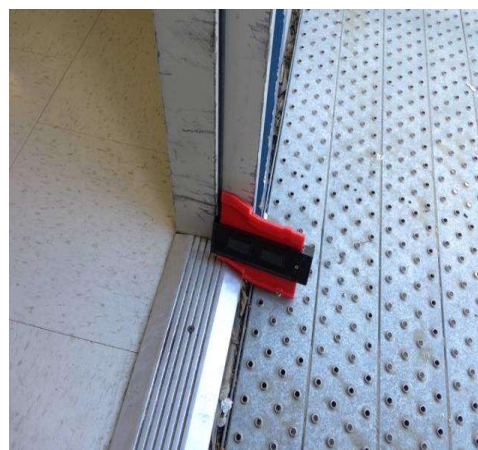
Recommendation Up to 0.50 inches

Costing Info (Estimated)

Provide smooth transition \$436

Code Reference ADA 404, 404.2.5,CA 11B-404.2.5

Record Number 50262



Pathways STAIR Center

Doors - Dining Building : Door

Main Entrance - Dining Building

Door : Door Closer Vertical Clearance

Finding

The door closing device limits the required headroom clearance.

On-Site Finding 77.75 inches

Recommendation

Replace the door closing device with a device that fits above the door casing and does not protrude into the primary path of travel.

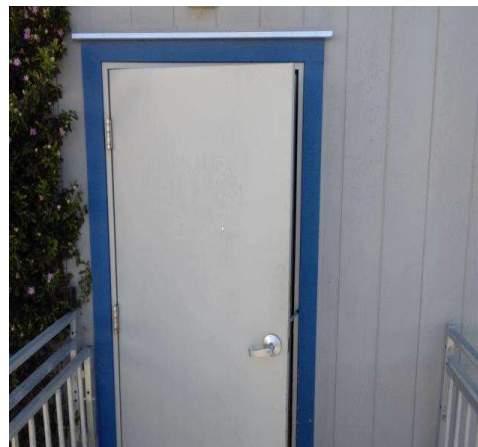
Recommendation At least 78.00 inches

Costing Info (Estimated)

Install new door opener \$250

Code Reference ADA 404, 404.2.3, CA 11B-404.2.3

Record Number 50260



Doors - Laundry Building : Door , Threshold

Main Entrance - Laundry Building

Door , Threshold : Door Threshold

Finding

The height of the threshold at the entrance door is greater than allowed.

On-Site Finding 0.75 inches

Recommendation

Modify or replace the threshold to provide the recommended height.

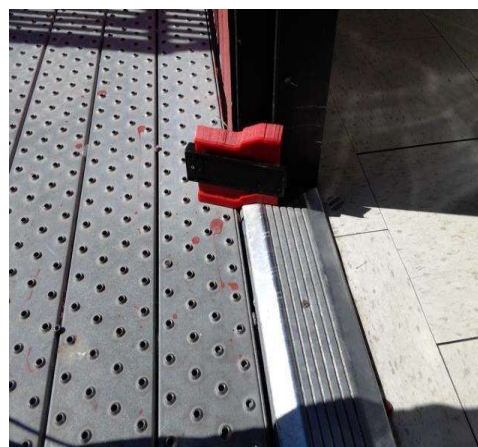
Recommendation Up to 0.50 inches

Costing Info (Estimated)

Provide smooth transition \$436

Code Reference ADA 404, 404.2.5, CA 11B-404.2.5

Record Number 50231



Pathways STAIR Center**Doors - Main Building : Door , Threshold****Main Entrance - Main Building**

Door , Threshold : Door Threshold

Finding

The height of the threshold at the entrance door is greater than allowed.

On-Site Finding 0.62 inches

Recommendation

Modify or replace the threshold to provide the recommended height.

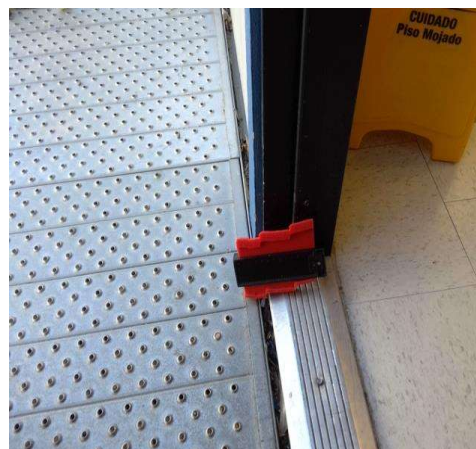
Recommendation Up to 0.50 inches

Costing Info (Estimated)

Provide smooth transition \$436

Code Reference ADA 404, 404.2.5, CA 11B-404.2.5

Record Number 50169

**Doors - Security Building : Door , Threshold****Main Entrance - Security Building**

Door , Threshold : Door Threshold

Finding

The height of the threshold at the entrance door is greater than allowed.

On-Site Finding 0.62 inches

Recommendation

Modify or replace the threshold to provide the recommended height.

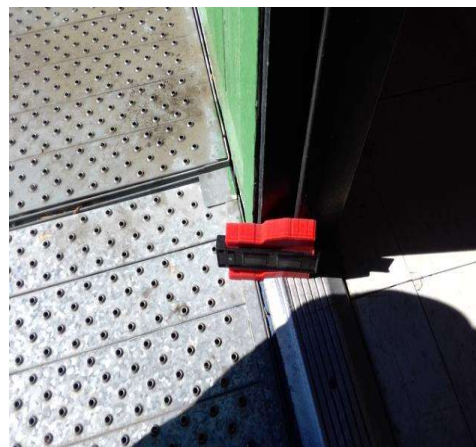
Recommendation Up to 0.50 inches

Costing Info (Estimated)

Provide smooth transition \$436

Code Reference ADA 404, 404.2.5, CA 11B-404.2.5

Record Number 50077



Pathways STAIR Center**Doors - Shelter B : Door , Threshold****Main Entrance - Shelter B**

Door , Threshold : Door Threshold

Finding

The height of the threshold at the entrance door is greater than allowed.

On-Site Finding 0.62 inches

Recommendation

Modify or replace the threshold to provide the recommended height.

Recommendation Up to 0.50 inches

Costing Info (Estimated)

Provide smooth transition \$436

Code Reference ADA 404, 404.2.5, CA 11B-404.2.5

Record Number 50184

**Doors - Shelter E : Door , Threshold****Main Entrance - Shelter E**

Door , Threshold : Door Threshold

Finding

The height of the threshold at the entrance door is greater than allowed.

On-Site Finding 0.62 inches

Recommendation

Modify or replace the threshold to provide the recommended height.

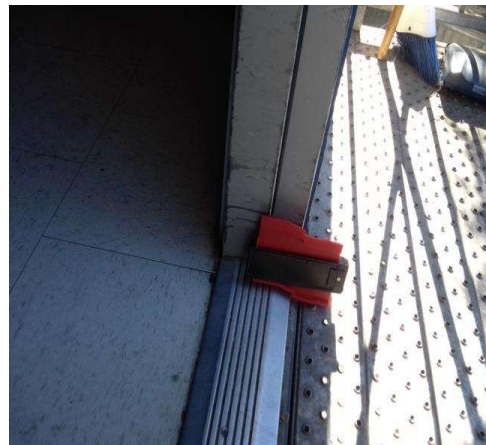
Recommendation Up to 0.50 inches

Costing Info (Estimated)

Provide smooth transition \$436

Code Reference ADA 404, 404.2.5, CA 11B-404.2.5

Record Number 50226



Pathways STAIR Center**Doors - Shelter E : Door****Main Entrance - Shelter E**

Door : Door Closer Vertical Clearance

Finding

The door closing device limits the required headroom clearance.

On-Site Finding 77.87 inches

Recommendation

Replace the door closing device with a device that fits above the door casing and does not protrude into the primary path of travel.

Recommendation At least 78.00 inches

Costing Info (Estimated)

Install new door opener \$250

Code Reference ADA 404, 404.2.3, CA 11B-404.2.3

Record Number 50225

**Doors - Exterior : Door , Hardware****Main Entrance Gate****Lever**

Door , Hardware : Door Opening Pressure

Finding

The door opening force for this door is greater than allowed.

On-Site Finding 6.00 pounds

Recommendation

Adjust the closer on the door to meet the door opening force requirements.

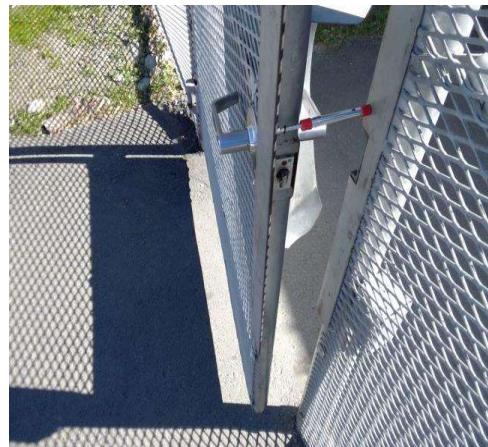
Recommendation Up to 5.00 pounds

Costing Info (Estimated)

Adjust door closer pressure \$25

Code Reference ADA 404.2.9, CA 11B-404.2.9

Record Number 50133



Pathways STAIR Center**Doors - Main Building : Door , Threshold****Main Office Entrance from Stairs**

Door , Threshold : Door Threshold

Finding

The height of the threshold at the entrance door is greater than allowed.

On-Site Finding 0.75 inches

Recommendation

Modify or replace the threshold to provide the recommended height.

Recommendation Up to 0.50 inches

Costing Info (Estimated)

Provide smooth transition \$436

Code Reference ADA 404, 404.2.5, CA 11B-404.2.5

Record Number 50255

**Doors - Main Building : Door , Latch Side Clearance****Main Office Entrance from Stairs****Pull Side**

Door , Latch Side Clearance : Front Approach Latch Side Clearance

Finding

There is less than the required latch side clearance on the pull side of the door.

On-Site Finding 12.00 inches

Recommendation

Provide required latch side clearance on the pull side of the door.

Recommendation At least 24.00 inches

Costing Info (Estimated)

Install automatic door opener \$2,921

Code Reference ADA 404, 404.2.4, CA 11B-404.2.4.1

Record Number 50256



Pathways STAIR Center**Doors - Main Building : Door , Clear Floor Space**

Main Office Entrance from Stairs**Pull Side**

Door , Clear Floor Space : Front Approach Clear Floor Space Length

Finding

There is not enough clear floor space provided at the pull side of the door.

On-Site Finding 40.12 inches

Recommendation

Provide the recommended clear floor space on the pull side of the door.

Recommendation At least 60.00 inches

Costing Info (Estimated)

Install automatic door opener \$2,921

Code Reference ADA 404, 404.2.4, CA 11B-404.2.4

Record Number 50257

**Doors - Restroom Building : Door , Hardware**

Mens Restroom**Lever**

Door , Hardware : Door Opening Pressure

Finding

The door opening force for this door is greater than allowed.

On-Site Finding 7.00 pounds

Recommendation

Adjust the closer on the door to meet the door opening force requirements.

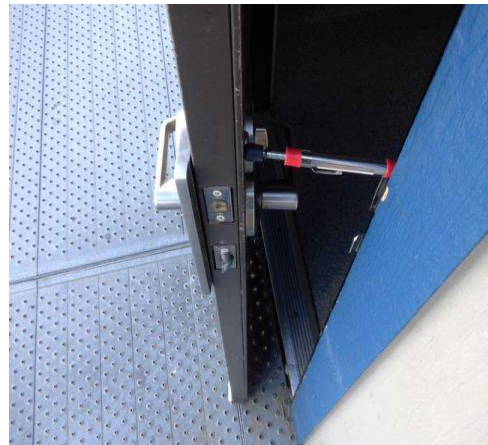
Recommendation Up to 5.00 pounds

Costing Info (Estimated)

Adjust door closer pressure \$25

Code Reference ADA 404.2.9, CA 11B-404.2.9

Record Number 50277



Pathways STAIR Center

Doors - Restroom Building : Door , Hardware

Mens Restroom

Door , Hardware : Bottom Door Panel Height

Finding

The bottom of the door does not provide a smooth, uninterrupted surface, or panel to allow the door to be opened by a wheelchair footrest without creating a trap or hazardous condition.

On-Site Finding 6.50 inches

Recommendation

Install a panel or replace the door to provide a smooth, uninterrupted surface at the bottom of the door.

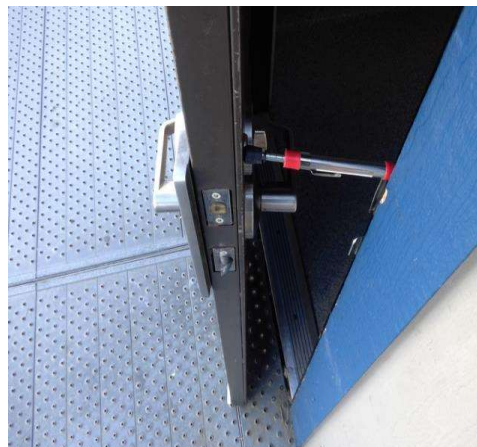
Recommendation At least 10.00 inches

Costing Info (Estimated)

Install compliant door \$2,000

Code Reference ADA 404, 404.2.10,CA 11B-404.2.10

Record Number 50278



Doors - Restroom Building : Door , Threshold

Mens Restroom

Door , Threshold : Door Threshold

Finding

The height of the threshold at the entrance door is greater than allowed.

On-Site Finding 0.62 inches

Recommendation

Modify or replace the threshold to provide the recommended height.

Recommendation Up to 0.50 inches

Costing Info (Estimated)

Provide smooth transition \$436

Code Reference ADA 404, 404.2.5,CA 11B-404.2.5

Record Number 50279



Pathways STAIR Center

Doors - Restroom Building : Door

Mens Restroom

Door : Door Closer Vertical Clearance

Finding

The door closing device limits the required headroom clearance.

On-Site Finding 77.75 inches

Recommendation

Replace the door closing device with a device that fits above the door casing and does not protrude into the primary path of travel.

Recommendation At least 78.00 inches

Costing Info (Estimated)

Install new door opener \$250

Code Reference ADA 404, 404.2.3, CA 11B-404.2.3

Record Number 50325



Doors - Shelter B : Door , Threshold

Shelter B Entrance from Stairs

Door , Threshold : Door Threshold

Finding

The height of the threshold at the entrance door is greater than allowed.

On-Site Finding 0.75 inches

Recommendation

Modify or replace the threshold to provide the recommended height.

Recommendation Up to 0.50 inches

Costing Info (Estimated)

Provide smooth transition \$436

Code Reference ADA 404, 404.2.5, CA 11B-404.2.5

Record Number 50235



Pathways STAIR Center**Doors - Shelter B : Door , Latch Side Clearance**

Shelter B Entrance from Stairs**Pull Side**

Door , Latch Side Clearance : Front Approach
Latch Side Clearance

Finding

There is less than the required latch side clearance on the pull side of the door.

On-Site Finding 19.50 inches

Recommendation

Provide required latch side clearance on the pull side of the door.

Recommendation At least 24.00 inches

Costing Info (Estimated)

Install automatic door opener \$2,921

Code Reference ADA 404, 404.2.4, CA 11B-404.2.4.1

Record Number 50236

**Doors - Shelter B : Door , Clear Floor Space**

Shelter B Entrance from Stairs**Pull Side**

Door , Clear Floor Space : Front Approach Clear
Floor Space Length

Finding

There is not enough clear floor space provided at the pull side of the door.

On-Site Finding 39.00 inches

Recommendation

Provide the recommended clear floor space on the pull side of the door.

Recommendation At least 60.00 inches

Costing Info (Estimated)

Install automatic door opener \$2,921

Code Reference ADA 404, 404.2.4, CA 11B-404.2.4

Record Number 50237



Pathways STAIR Center**Doors - Shelter B : Door****Shelter B Entrance from Stairs**

Door : Door Closer Vertical Clearance

Finding

The door closing device limits the required headroom clearance.

On-Site Finding 77.87 inches

Recommendation

Replace the door closing device with a device that fits above the door casing and does not protrude into the primary path of travel.

Recommendation At least 78.00 inches

Costing Info (Estimated)

Install new door opener \$250

Code Reference ADA 404, 404.2.3, CA 11B-404.2.3

Record Number 50322

**Doors - Shelter E : Door , Hardware****Shelter E Entrance from Stairs****Push Bar / Lever**

Door , Hardware : Door Opening Pressure

Finding

The door opening force for this door is greater than allowed.

On-Site Finding 9.00 pounds

Recommendation

Adjust the closer on the door to meet the door opening force requirements.

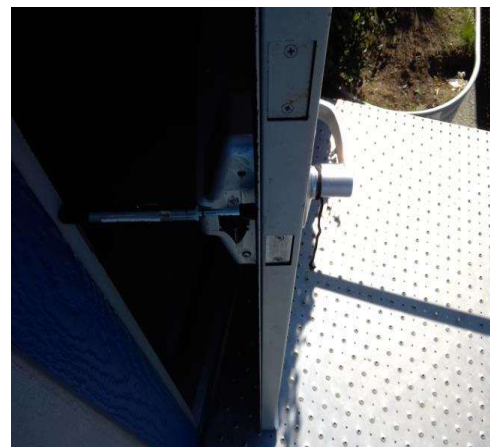
Recommendation Up to 5.00 pounds

Costing Info (Estimated)

Adjust door closer pressure \$25

Code Reference ADA 404.2.9, CA 11B-404.2.9

Record Number 50187



Pathways STAIR Center**Doors - Shelter E : Door , Threshold****Shelter E Entrance from Stairs**

Door , Threshold : Door Threshold

Finding

The height of the threshold at the entrance door is greater than allowed.

On-Site Finding 0.75 inches

Recommendation

Modify or replace the threshold to provide the recommended height.

Recommendation Up to 0.50 inches

Costing Info (Estimated)

Provide smooth transition \$436

Code Reference ADA 404, 404.2.5, CA 11B-404.2.5

Record Number 50188

**Doors - Shelter E : Door , Latch Side Clearance****Shelter E Entrance from Stairs****Pull Side**

Door , Latch Side Clearance : Front Approach Latch Side Clearance

Finding

There is less than the required latch side clearance on the pull side of the door.

On-Site Finding 16.25 inches

Recommendation

Provide required latch side clearance on the pull side of the door.

Recommendation At least 24.00 inches

Costing Info (Estimated)

Install automatic door opener \$2,921

Code Reference ADA 404, 404.2.4, CA 11B-404.2.4.1

Record Number 50189



Pathways STAIR Center**Doors - Shelter E : Door , Clear Floor Space**

Shelter E Entrance from Stairs**Pull Side**

Door , Clear Floor Space : Front Approach Clear Floor Space Length

Finding

There is not enough clear floor space provided at the pull side of the door.

On-Site Finding 39.50 inches

Recommendation

Provide the recommended clear floor space on the pull side of the door.

Recommendation At least 60.00 inches

Costing Info (Estimated)

Install automatic door opener \$2,921

Code Reference ADA 404, 404.2.4, CA 11B-404.2.4

Record Number 50190

**Doors - Shelter E : Door**

Shelter E Entrance from Stairs

Door : Door Closer Vertical Clearance

Finding

The door closing device limits the required headroom clearance.

On-Site Finding 77.62 inches

Recommendation

Replace the door closing device with a device that fits above the door casing and does not protrude into the primary path of travel.

Recommendation At least 78.00 inches

Costing Info (Estimated)

Install new door opener \$250

Code Reference ADA 404, 404.2.3, CA 11B-404.2.3

Record Number 50185



Pathways STAIR Center**Doors - Main Building : Door , Hardware****Unisex Restroom in Main Building****Lever**

Door , Hardware : Door Lock

Finding

The door lock requires tight grasping, pinching, or twisting of the wrist to operate.

On-Site Finding Not Accessible

Recommendation

Provide a compliant door lock for the door that does not require tight grasping, pinching, or twisting of the wrist to operate.

Recommendation See Recommendation

Costing Info (Estimated)

Provide door lock \$310

Code Reference ADA 404.2.7, 309.4

Record Number 50238

**Doors - Main Building : Door , Clear Floor Space****Unisex Restroom in Main Building****Pull Side**

Door , Clear Floor Space : Front Approach Clear Floor Space Length

Finding

There is not enough clear floor space provided at the pull side of the door.

On-Site Finding 48.00 inches

Recommendation

Provide the recommended clear floor space on the pull side of the door.

Recommendation At least 60.00 inches

Costing Info (Estimated)

Install automatic door opener \$2,921

Code Reference ADA 404, 404.2.4, CA 11B-404.2.4

Notes : Lavatory Obstructs Clear Floor Space Length.

Record Number 50239



Pathways STAIR Center**Doors - Restroom Building : Door , Hardware**

Womens Restroom**Lever**

Door , Hardware : Door Opening Pressure

Finding

The door opening force for this door is greater than allowed.

On-Site Finding 11.00 pounds

Recommendation

Adjust the closer on the door to meet the door opening force requirements.

Recommendation Up to 5.00 pounds

Costing Info (Estimated)

Adjust door closer pressure \$25

Code Reference ADA 404.2.9,CA 11B-404.2.9

Record Number 50088

**Doors - Restroom Building : Door , Hardware**

Womens Restroom

Door , Hardware : Bottom Door Panel Height

Finding

The bottom of the door does not provide a smooth, uninterrupted surface, or panel to allow the door to be opened by a wheelchair footrest without creating a trap or hazardous condition.

On-Site Finding 9.00 inches

Recommendation

Install a panel or replace the door to provide a smooth, uninterrupted surface at the bottom of the door.

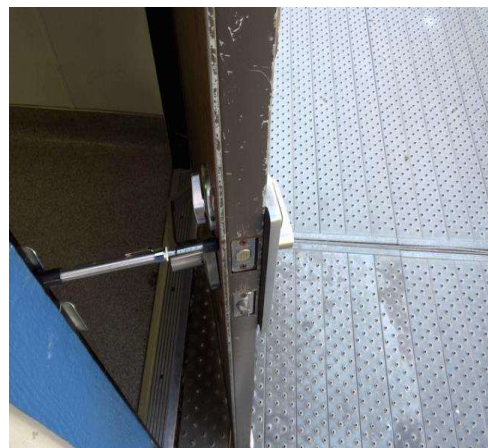
Recommendation At least 10.00 inches

Costing Info (Estimated)

Install compliant door \$2,000

Code Reference ADA 404, 404.2.10,CA 11B-404.2.10

Record Number 50089



Pathways STAIR Center**Doors - Restroom Building : Door , Threshold****Womens Restroom**

Door , Threshold : Door Threshold

Finding

The height of the threshold at the entrance door is greater than allowed.

On-Site Finding 0.62 inches

Recommendation

Modify or replace the threshold to provide the recommended height.

Recommendation Up to 0.50 inches

Costing Info (Estimated)

Provide smooth transition \$436

Code Reference ADA 404, 404.2.5, CA 11B-404.2.5

Record Number 50090

**Doors - Restroom Building : Door****Womens Restroom**

Door : Door Closer Vertical Clearance

Finding

The door closing device limits the required headroom clearance.

On-Site Finding 77.50 inches

Recommendation

Replace the door closing device with a device that fits above the door casing and does not protrude into the primary path of travel.

Recommendation At least 78.00 inches

Costing Info (Estimated)

Install new door opener \$250

Code Reference ADA 404, 404.2.3, CA 11B-404.2.3

Record Number 50313



Pathways STAIR Center

Signage - Main Building : Signage

Break Room - Main Building

Signage : No Room Identification

Finding

There is no room identification signage.

On-Site Finding None Found

Recommendation

Install room identification signage.

Recommendation See Recommendation

Costing Info (Estimated)

Install signage \$158

Code Reference ADA 703, 216, 216.2,CA 11B-216.2

Record Number 50230



Signage - Dining Building : Signage

Dining Building Entrance from Stairs

Signage : No Room Identification

Finding

There is no room identification signage.

On-Site Finding None Found

Recommendation

Install room identification signage.

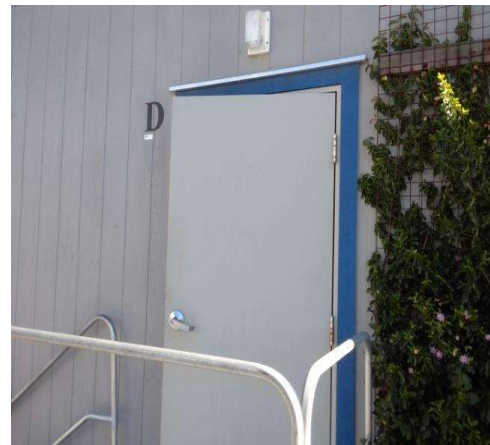
Recommendation See Recommendation

Costing Info (Estimated)

Install signage \$158

Code Reference ADA 703, 216, 216.2,CA 11B-216.2

Record Number 50074



Pathways STAIR Center

Signage - Dining Building : Signage , Signage

Main Entrance - Dining Building

Signage , Signage : No Accessible Element/Entrance Signage

Finding

There is no room signage.

On-Site Finding None Found

Recommendation

Install accessible room signage.

Recommendation See Recommendation

Costing Info (Estimated)

Install signage \$158

Code Reference ADA 216.2, 216.6,CA 11B-216.2,CA 11B-216.6

Record Number 50224



Signage - Laundry Building : Signage , Signage

Main Entrance - Laundry Building

Signage , Signage : No Accessible Element/Entrance Signage

Finding

There is no room signage.

On-Site Finding None Found

Recommendation

Install accessible room signage.

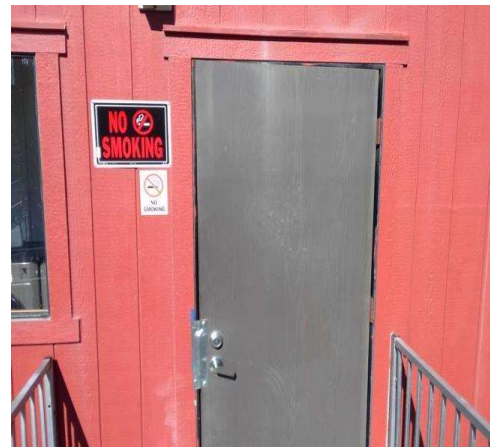
Recommendation See Recommendation

Costing Info (Estimated)

Install signage \$158

Code Reference ADA 216.2, 216.6,CA 11B-216.2,CA 11B-216.6

Record Number 50177



Pathways STAIR Center

Signage - Main Building : Signage , Signage

Main Entrance - Main Building

Signage , Signage : No Accessible Element/Entrance Signage

Finding

There is no room signage.

On-Site Finding None Found

Recommendation

Install accessible room signage.

Recommendation See Recommendation

Costing Info (Estimated)

Install signage \$158

Code Reference ADA 216.2, 216.6,CA 11B-216.2,CA 11B-216.6

Record Number 50109



Signage - Security Building : Signage , Signage

Main Entrance - Security Building

Signage , Signage : No Accessible Element/Entrance Signage

Finding

There is no room signage.

On-Site Finding None Found

Recommendation

Install accessible room signage.

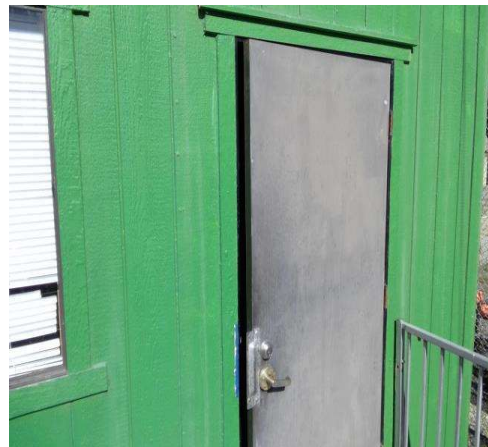
Recommendation See Recommendation

Costing Info (Estimated)

Install signage \$158

Code Reference ADA 216.2, 216.6,CA 11B-216.2,CA 11B-216.6

Record Number 50153



Pathways STAIR Center

Signage - Shelter B : Signage , Signage

Main Entrance - Shelter B

Signage , Signage : No Accessible Element/Entrance Signage

Finding

There is no room signage.

On-Site Finding None Found

Recommendation

Install accessible room signage.

Recommendation See Recommendation

Costing Info (Estimated)

Install signage \$158

Code Reference ADA 216.2, 216.6,CA 11B-216.2,CA 11B-216.6

Record Number 50232



Signage - Shelter E : Signage , Signage

Main Entrance - Shelter E

Signage , Signage : No Accessible Element/Entrance Signage

Finding

There is no room signage.

On-Site Finding None Found

Recommendation

Install accessible room signage.

Recommendation See Recommendation

Costing Info (Estimated)

Install signage \$158

Code Reference ADA 216.2, 216.6,CA 11B-216.2,CA 11B-216.6

Record Number 50258



Pathways STAIR Center

Signage - Exterior : Signage , Signage

Main Entrance Gate

Signage , Signage : No Accessible Element/Entrance Signage

Finding

There is no room signage.

On-Site Finding None Found

Recommendation

Install accessible room signage.

Recommendation See Recommendation

Costing Info (Estimated)

Install signage \$158

Code Reference ADA 216.2, 216.6,CA 11B-216.2,CA 11B-216.6

Record Number 50180



Signage - Main Building : Signage

Main Office Entrance from Stairs

Signage : No Room Identification

Finding

There is no room identification signage.

On-Site Finding None Found

Recommendation

Install room identification signage.

Recommendation See Recommendation

Costing Info (Estimated)

Install signage \$158

Code Reference ADA 703, 216, 216.2,CA 11B-216.2

Record Number 50119



Pathways STAIR Center

Signage - Shelter B : Signage

Shelter B Entrance from Stairs

Signage : No Room Identification

Finding

There is no room identification signage.

On-Site Finding None Found

Recommendation

Install room identification signage.

Recommendation See Recommendation

Costing Info (Estimated)

Install signage \$158

Code Reference ADA 703, 216, 216.2,CA 11B-216.2

Record Number 50170



Signage - Shelter E : Signage

Shelter E Entrance from Stairs

Signage : No Room Identification

Finding

There is no room identification signage.

On-Site Finding None Found

Recommendation

Install room identification signage.

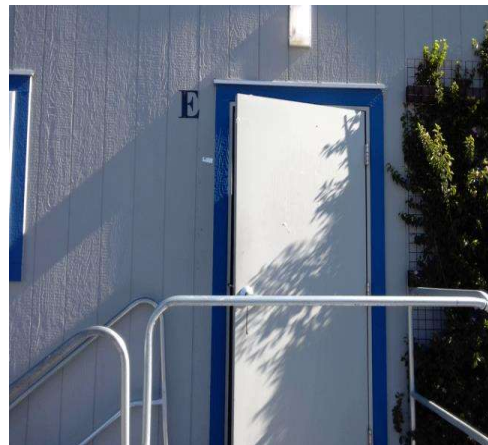
Recommendation See Recommendation

Costing Info (Estimated)

Install signage \$158

Code Reference ADA 703, 216, 216.2,CA 11B-216.2

Record Number 50179



Pathways STAIR Center**Restrooms - Restroom Building : Restroom , Door Signage**

Mens Restroom**Door Sign - Male**

Restroom , Door Signage : Door Signage Height

Finding

The gender use signage on the entrance door is not mounted at the required height.

On-Site Finding 63.00 inches

Recommendation

Post gender use signage on the center of the door at the required height.

Recommendation 58.00 - 60.00 inches

Costing Info (Estimated)

Install signage \$158

Code Reference CA 11B-703.7.2.6

Record Number 50151

**Restrooms - Restroom Building : Restroom , Lavatory**

Mens Restroom**Lavatory**

Restroom , Lavatory : Lavatory - Supply Lines not wrapped

Finding

Supply lines are not wrapped at the lavatory.

On-Site Finding Not Wrapped

Recommendation

Wrap the supply lines around lavatory according to compliance.

Recommendation See Recommendation

Costing Info (Estimated)

Wrap supply lines \$149

Code Reference ADA 213, 606, 606.5, CA 11B-606.5

Record Number 50150



Pathways STAIR Center**Restrooms - Restroom Building : Restroom , Dispensers**

Mens Restroom**Paper Towel**

Restroom , Dispensers : Dispenser Height

Finding

The height of the controls and operating mechanisms for the dispenser is not at the correct height.

On-Site Finding 46.00 inches

Recommendation

Relocate the dispenser to the correct height.

Recommendation Up to 40.00 inches

Costing Info (Estimated)

Provide compliant dispenser \$277

Code Reference ADA 309, 205, 308, 606, 308.1,CA
11B-603.5

Record Number 50149

**Restrooms - Restroom Building : Restroom , Dispensers**

Mens Restroom**Soap**

Restroom , Dispensers : Dispenser Height

Finding

The height of the controls and operating mechanisms for the dispenser is not at the correct height.

On-Site Finding 55.75 inches

Recommendation

Relocate the dispenser to the correct height.

Recommendation Up to 40.00 inches

Costing Info (Estimated)

Provide compliant dispenser \$277

Code Reference ADA 309, 205, 308, 606, 308.1,CA
11B-603.5

Record Number 50148



Pathways STAIR Center**Restrooms - Restroom Building : Restroom , Wall Signage**

Mens Restroom**Wall Sign**

Restroom , Wall Signage : No Wall Signage

Finding

There is no signage indicating accessibility on the latch side of the entry door of the restroom.

On-Site Finding None Found

Recommendation

Provide compliant signage on latch side of door.

Recommendation See Recommendation

Costing Info (Estimated)

Install signage \$158

Code Reference ADA 703, 216, 216.8, CA 11B-216.8

Record Number 50152

**Restrooms - Restroom Building : Restroom , Toilet**

Mens Restroom

Restroom , Toilet : Toilet Flush Control not on Wide Side

Finding

The flush control on the toilet is not on the wide (approach) side of the toilet.

On-Site Finding Wrong Side of Toilet

Recommendation

Relocate the flush control so it is on the wide (approach) side of the toilet area. Flush controls shall be hand-operated or automatic mechanisms.

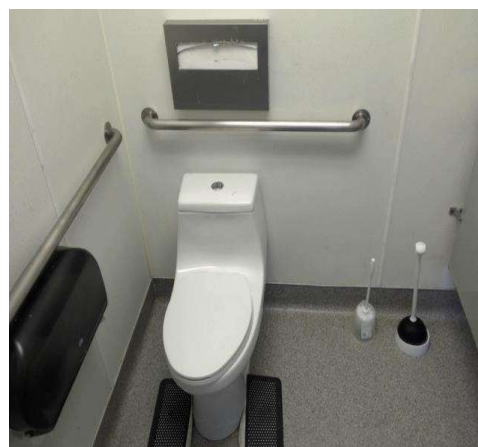
Recommendation See Recommendation

Costing Info (Estimated)

Relocate flush valve \$127

Code Reference ADA 603, 604.6, CA 11B-604.6

Record Number 50294



Pathways STAIR Center

Restrooms - Restroom Building : Restroom , Toilet

Mens Restroom

Restroom , Toilet : Toilet Clear Floor Space

Finding

There is less than the required minimum space in front of the toilet.

On-Site Finding 31.00 inches

Recommendation

Create the required minimum clear space in front of the toilet.

Recommendation At least 48.00 inches

Costing Info (Estimated)

Modify space \$3,500

Code Reference ADA 603,CA 11B-604.8.1

Record Number 50295



Restrooms - Restroom Building : Restroom , Grab Bars

Mens Restroom

Restroom , Grab Bars : Distance from Back Wall to Front of Grab Bar

Finding

The distance from the back wall to the front of the grab bar is less than required.

On-Site Finding 53.00 inches

Recommendation

Install or move the grab bar to create the required distance from the back wall to the front of the grab bar.

Recommendation At least 54.00 inches

Costing Info (Estimated)

Provide compliant grab bar \$267

Code Reference ADA 603, 609, 604.5.1,CA 11B-604.5.1,CA 11B-609

Record Number 50296



Pathways STAIR Center**Restrooms - Restroom Building : Restroom , Grab Bars**

Mens Restroom

Restroom , Grab Bars : Side Grab Bar Height

Finding

The height of the side grab bar is not at the correct height.

On-Site Finding 37.00 inches

Recommendation

Remount the grab bar so it is at the correct height.

Recommendation 33.00 - 36.00 inches

Costing Info (Estimated)

Relocate compliant grab bars and patch \$500

Code Reference ADA 603, 609, 609.4, CA 11B-609.4, CA 11B-604.5

Record Number 50297

**Restrooms - Restroom Building : Restroom , Grab Bars**

Mens Restroom

Restroom , Grab Bars : Rear Grab Bar Height

Finding

The grab bar on the rear wall is not at the correct height.

On-Site Finding 37.00 inches

Recommendation

Remount the rear grab bar in the compartment designated to be accessible so the height of the gripping surface is at the correct height.

Recommendation 33.00 - 36.00 inches

Costing Info (Estimated)

Provide compliant grab bars \$231

Code Reference ADA 603, 609, 609.4, CA 11B-609.4

Record Number 50299



Pathways STAIR Center

Restrooms - Restroom Building : Restroom , Compartment Door

Mens Restroom

Restroom , Compartment Door : Compartment Door

Finding

Door does not close automatically.

On-Site Finding Missing Hardware

Recommendation

Provide an automatic door closer, spring hinge, pull bar or accessible handle mounted on the inside of the compartment door to the compartment designated to be accessible in the restroom.

Recommendation See Recommendation

Costing Info (Estimated)

Install accessible hardware on stall door \$269

Code Reference ADA 404, 604.8.1.2, 604.8,CA 11B-604.8.1.2

Record Number 50300



Pathways STAIR Center**Restrooms - Restroom Building : Restroom , Compartment Door**

Mens RestroomRestroom , Compartment Door : Compartment
Door Latch**Finding**

The door to the compartment designated to be accessible in the restroom does not have appropriate accessible hardware.

On-Site Finding Not Accessible

Recommendation

Install accessible hardware on the compartment door that does not require tight grasping, pinching, or twisting of the wrist.

Recommendation See Recommendation

Costing Info (Estimated)

Add accessible hardware to existing door \$289

Code Reference ADA 404, 404.2.7, 309.4, 604.8,CA
11B-404.2.7,CA 11B-604.8.1.2

Record Number 50301



Pathways STAIR Center**Restrooms - Restroom Building : Restroom , Toilet Compartment****Mens Restroom**

Restroom , Toilet Compartment : Toilet Paper Dispenser Interferes with Grab Bar

Finding

The toilet paper dispenser interferes with the use of the grab bar.

On-Site Finding Interferes

Recommendation

Relocate the toilet paper dispenser so it does not interfere with the use of a grab bar. Toilet paper dispensers must allow continuous paper flow.

Recommendation See Recommendation

Costing Info (Estimated)

Provide compliant dispenser \$277

Code Reference ADA 603, 609.3, CA 11B-309.4, CA 11B-609.3

Record Number 51657

**Restrooms - Restroom Building : Restroom , Toilet Compartment****Mens Restroom**

Restroom , Toilet Compartment : Seat Cover Dispenser Behind Toilet

Finding

The location of the seat cover dispenser does not provide sufficient clear floor space.

On-Site Finding Not Accessible

Recommendation

Relocate the seat cover dispenser so it provides sufficient clear floor space and does not interfere with the use of a grab bar. Make certain that the height of all operable parts of the seat cover dispenser is within reach range above the finished floor.

Recommendation See Recommendation

Costing Info (Estimated)

Provide compliant dispenser \$277

Code Reference ADA 304, 309.2, 305.1, CA 11B-603.5, CA 11B-309.2, CA 11B-305.1

Record Number 50327



Pathways STAIR Center**Restrooms - Restroom Building : Restroom , Toilet Compartment****Mens Restroom**Restroom , Toilet Compartment : Seat Cover
Dispenser Height**Finding**

The height of the operable parts of the seat cover dispenser is greater than the allowed maximum height.

On-Site Finding 45.00 inches

Recommendation

Lower the seat cover dispenser so the height of all operable parts meets the required accessible height. Make certain that the location of the seat cover dispenser does not interfere with the use of a grab bar.

Recommendation Up to 40.00 inches

Costing Info (Estimated)

Provide compliant dispenser \$277

Code Reference ADA 309, 205, 308, 606, 308.2, CA 11B-603.5

Record Number 50328

**Restrooms - Restroom Building : Restroom****Mens Restroom**

Restroom : Seat Cover Dispenser

Finding

Seat cover dispenser interferes with use of grab bar.

On-Site Finding Interferes

Recommendation

Move the seat cover dispenser so it does not interfere with the use of the grab bars.

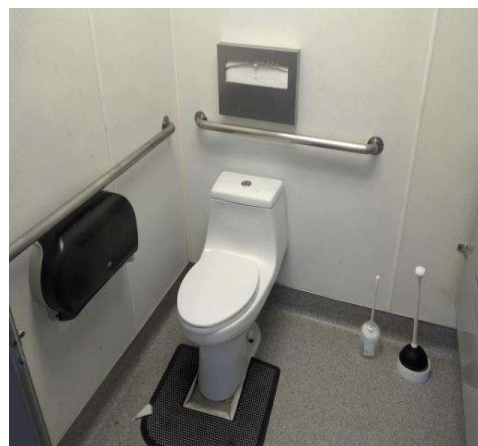
Recommendation See Recommendation

Costing Info (Estimated)

\$277

Code Reference ADA 609.3

Record Number 50329



Pathways STAIR Center

Restrooms - Main Building : Restroom , Toilet

Unisex Restroom in Main Building

Restroom , Toilet : Toilet Flush Control not on Wide Side

Finding

The flush control on the toilet is not on the wide (approach) side of the toilet.

On-Site Finding Wrong Side of Toilet

Recommendation

Relocate the flush control so it is on the wide (approach) side of the toilet area. Flush controls shall be hand-operated or automatic mechanisms.

Recommendation See Recommendation

Costing Info (Estimated)

Relocate flush valve \$127

Code Reference ADA 603, 604.6, CA 11B-604.6

Record Number 50084



Restrooms - Main Building : Restroom , Toilet

Unisex Restroom in Main Building

Restroom , Toilet : Toilet Clear Floor Space

Finding

There is less than the required minimum space in front of the toilet.

On-Site Finding 45.00 inches

Recommendation

Create the required minimum clear space in front of the toilet.

Recommendation At least 48.00 inches

Costing Info (Estimated)

Modify space \$3,500

Code Reference ADA 603, CA 11B-604.8.1

Record Number 50085



Pathways STAIR Center

Restrooms - Main Building : Restroom , Grab Bar

Unisex Restroom in Main Building

Restroom , Grab Bar : Rear Grab Bar Location

Finding

Rear grab bar location is not compliant.

On-Site Finding Not Compliant

Recommendation

Remount the rear grab bar to provide a minimum of 12 inches of extension from the center line of the of the water closet on one side and 24 inches of extension on the side.

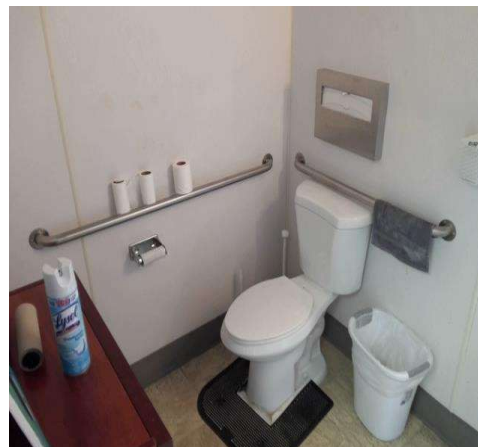
Recommendation See Recommendation

Costing Info (Estimated)

Provide a compliant back grab bar. \$267

Code Reference ADA 604.5.2,CA 11B-604.5.2

Record Number 50086



Restrooms - Main Building : Restroom , Lavatory

Unisex Restroom in Main Building

Lavatory

Restroom , Lavatory : Lavatory Pipes Not Wrapped

Finding

The pipes under the lavatory do not provide protection against contact.

On-Site Finding Pipes not wrapped.

Recommendation

Insulate or otherwise configure pipes under the lavatory to protect against contact. Make certain there are no sharp or abrasive surfaces under the lavatory.

Recommendation See Recommendation

Costing Info (Estimated)

Wrap pipes \$149

Code Reference ADA 213, 606, 606.5,CA 11B-606.5

Record Number 50220



Pathways STAIR Center

Restrooms - Main Building : Restroom , Lavatory

**Unisex Restroom in Main Building
Lavatory**

Restroom , Lavatory : Lavatory - Supply Lines not wrapped

Finding

Supply lines are not wrapped at the lavatory.

On-Site Finding Not Wrapped

Recommendation

Wrap the supply lines around lavatory according to compliance.

Recommendation See Recommendation

Costing Info (Estimated)

Wrap supply lines \$149

Code Reference ADA 213, 606, 606.5, CA 11B-606.5

Record Number 50221



Restrooms - Main Building : Restroom , Dispensers

**Unisex Restroom in Main Building
Paper Towel**

Restroom , Dispensers : Dispenser Height

Finding

The height of the controls and operating mechanisms for the dispenser is not at the correct height.

On-Site Finding 44.00 inches

Recommendation

Relocate the dispenser to the correct height.

Recommendation Up to 40.00 inches

Costing Info (Estimated)

Provide compliant dispenser \$277

Code Reference ADA 309, 205, 308, 606, 308.1, CA 11B-603.5

Record Number 50218



Pathways STAIR Center**Restrooms - Main Building : Restroom , Dispensers****Unisex Restroom in Main Building****Soap**

Restroom , Dispensers : Dispenser Height

Finding

The height of the controls and operating mechanisms for the dispenser is not at the correct height.

On-Site Finding 52.00 inches

Recommendation

Relocate the dispenser to the correct height.

Recommendation Up to 40.00 inches

Costing Info (Estimated)

Provide compliant dispenser \$277

Code Reference ADA 309, 205, 308, 606, 308.1,CA 11B-603.5

Record Number 50217

**Restrooms - Main Building : Restroom , Wall Signage****Unisex Restroom in Main Building****Wall Sign**

Restroom , Wall Signage : No Wall Signage

Finding

There is no signage indicating accessibility on the latch side of the entry door of the restroom.

On-Site Finding None Found

Recommendation

Provide compliant signage on latch side of door.

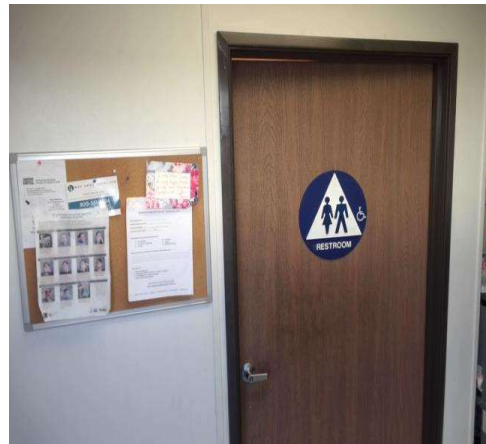
Recommendation See Recommendation

Costing Info (Estimated)

Install signage \$158

Code Reference ADA 703, 216, 216.8,CA 11B-216.8

Record Number 50223



Pathways STAIR Center

Restrooms - Main Building : Restroom , Toilet Compartment

Unisex Restroom in Main Building

Restroom , Toilet Compartment : Seat Cover Dispenser Behind Toilet

Finding

The location of the seat cover dispenser does not provide sufficient clear floor space.

On-Site Finding Not Accessible

Recommendation

Relocate the seat cover dispenser so it provides sufficient clear floor space and does not interfere with the use of a grab bar. Make certain that the height of all operable parts of the seat cover dispenser is within reach range above the finished floor.

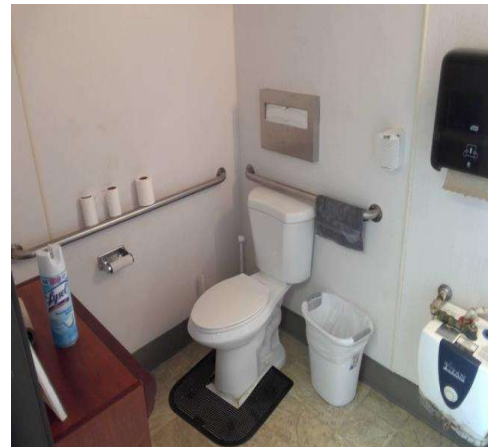
Recommendation See Recommendation

Costing Info (Estimated)

Provide compliant dispenser \$277

Code Reference ADA 304, 309.2, 305.1, CA 11B-603.5, CA 11B-309.2, CA 11B-305.1

Record Number 50310



Restrooms - Main Building : Restroom , Toilet Compartment

Unisex Restroom in Main Building

Restroom , Toilet Compartment : Seat Cover Dispenser Height

Finding

The height of the operable parts of the seat cover dispenser is greater than the allowed maximum height.

On-Site Finding 48.00 inches

Recommendation

Lower the seat cover dispenser so the height of all operable parts meets the required accessible height. Make certain that the location of the seat cover dispenser does not interfere with the use of a grab bar.

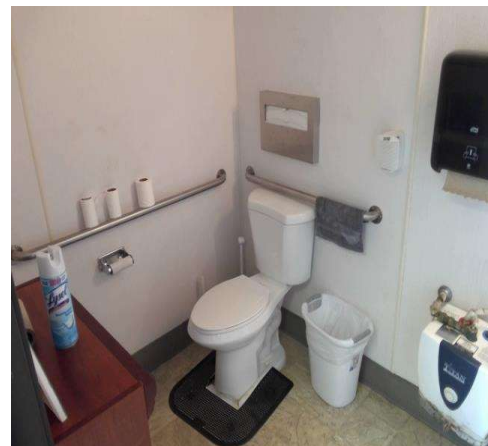
Recommendation Up to 40.00 inches

Costing Info (Estimated)

Provide compliant dispenser \$277

Code Reference ADA 309, 205, 308, 606, 308.2, CA 11B-603.5

Record Number 50311



Pathways STAIR Center**Restrooms - Main Building : Restroom****Unisex Restroom in Main Building**

Restroom : Seat Cover Dispenser

Finding

Seat cover dispenser interferes with use of grab bar.

On-Site Finding Interferes

Recommendation

Move the seat cover dispenser so it does not interfere with the use of the grab bars.

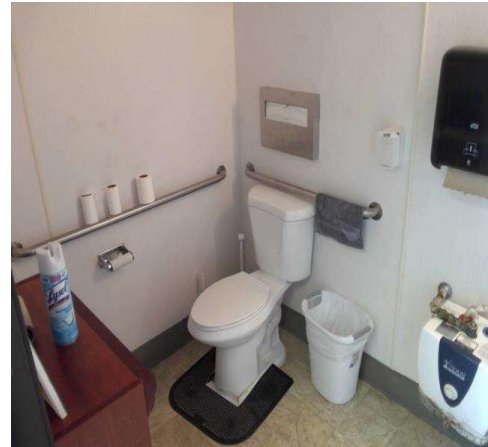
Recommendation See Recommendation

Costing Info (Estimated)

\$277

Code Reference ADA 609.3

Record Number 50312

**Restrooms - Main Building : Restroom****Unisex Restroom in Main Building**

Restroom : No Door Privacy Lock and Occupied Indicator

Finding

The restroom door does not provide a compliant privacy lock with occupancy indicator.

On-Site Finding None Found

Recommendation

Install a compliant privacy lock with occupancy indicator to the door.

Recommendation See Recommendation

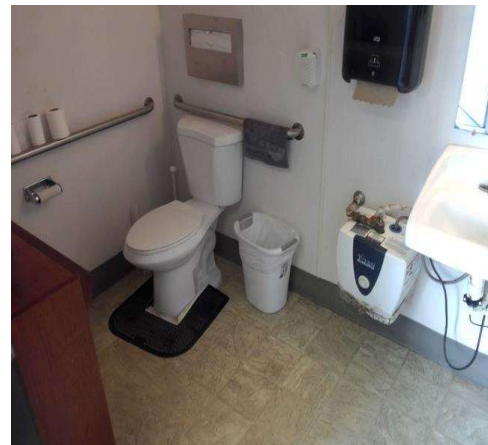
Costing Info (Estimated)

Replace existing lock set with lever handled lock set \$804

Code Reference ADA 213, 213.2.1, CA 11B-213.2.1

Notes : Lavatory Reduces Turning Space.

Record Number 50319



Pathways STAIR Center**Restrooms - Main Building : Restroom****Unisex Restroom in Main Building**

Restroom : Circular Turning Space Diameter

Finding

There is not sufficient clear floor space in the restroom to accommodate an individual in a wheelchair.

On-Site Finding 56.00 inches

Recommendation

Modify the restroom to provide sufficient clear floor space for a turning radius in the restroom to accommodate an individual in a wheelchair.

Recommendation At least 60.00 inches

Costing Info (Estimated)

Install single-use toilet room \$14,000

Code Reference ADA 603, 304, 304.3.1, 603.2.1, 304.3, 603.2, CA 11B-304.3

Notes : Lavatory Reduces Turning Space.

Record Number 50320

**Restrooms - Restroom Building : Restroom , Toilet****Womens Restroom**

Restroom , Toilet : Toilet Clear Floor Space

Finding

There is less than the required minimum space in front of the toilet.

On-Site Finding 39.50 inches

Recommendation

Create the required minimum clear space in front of the toilet.

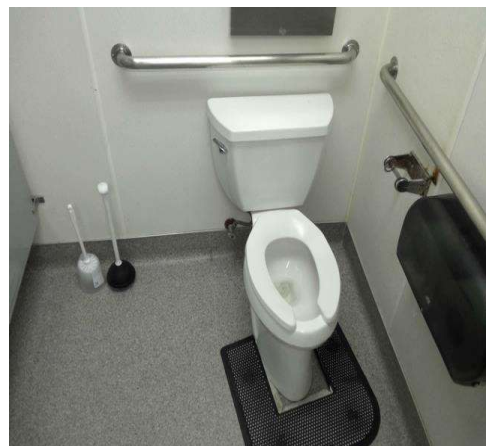
Recommendation At least 48.00 inches

Costing Info (Estimated)

Modify space \$3,500

Code Reference ADA 603, CA 11B-604.8.1

Record Number 50162



Pathways STAIR Center**Restrooms - Restroom Building : Restroom , Grab Bars**

Womens Restroom

Restroom , Grab Bars : Distance from Back Wall to Front of Grab Bar

Finding

The distance from the back wall to the front of the grab bar is less than required.

On-Site Finding 53.00 inches

Recommendation

Install or move the grab bar to create the required distance from the back wall to the front of the grab bar.

Recommendation At least 54.00 inches

Costing Info (Estimated)

Provide compliant grab bar \$267

Code Reference ADA 603, 609, 604.5.1,CA 11B-604.5.1,CA 11B-609

Record Number 50163

**Restrooms - Restroom Building : Restroom , Grab Bars**

Womens Restroom

Restroom , Grab Bars : Side Grab Bar Height

Finding

The height of the side grab bar is not at the correct height.

On-Site Finding 36.75 inches

Recommendation

Remount the grab bar so it is at the correct height.

Recommendation 33.00 - 36.00 inches

Costing Info (Estimated)

Relocate compliant grab bars and patch \$500

Code Reference ADA 603, 609, 609.4,CA 11B-609.4,CA 11B-604.5

Record Number 50164



Pathways STAIR Center**Restrooms - Restroom Building : Restroom , Grab Bars****Womens Restroom**

Restroom , Grab Bars : Rear Grab Bar Height

Finding

The grab bar on the rear wall is not at the correct height.

On-Site Finding 37.00 inches

Recommendation

Remount the rear grab bar in the compartment designated to be accessible so the height of the gripping surface is at the correct height.

Recommendation 33.00 - 36.00 inches

Costing Info (Estimated)

Provide compliant grab bars \$231

Code Reference ADA 603, 609, 609.4, CA 11B-609.4

Record Number 50166

**Restrooms - Restroom Building : Restroom , Compartment Door****Womens Restroom**

Restroom , Compartment Door : Compartment Door

Finding

Door does not close automatically.

On-Site Finding Missing Hardware

Recommendation

Provide an automatic door closer, spring hinge, pull bar or accessible handle mounted on the inside of the compartment door to the compartment designated to be accessible in the restroom.

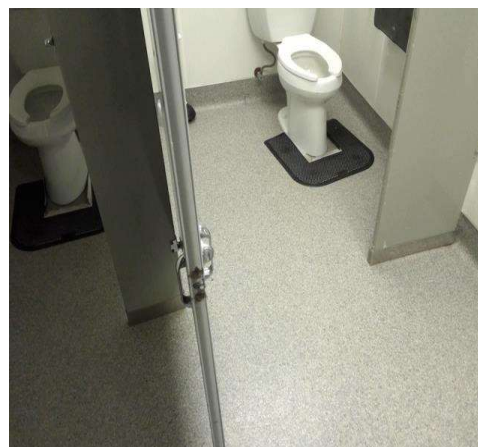
Recommendation See Recommendation

Costing Info (Estimated)

Install accessible hardware on stall door \$269

Code Reference ADA 404, 604.8.1.2, 604.8, CA 11B-604.8.1.2

Record Number 50168



Pathways STAIR Center**Restrooms - Restroom Building : Restroom , Toilet Compartment****Womens Restroom**

Restroom , Toilet Compartment : Toilet Paper Dispenser Interferes with Grab Bar

Finding

The toilet paper dispenser interferes with the use of the grab bar.

On-Site Finding Interferes

Recommendation

Relocate the toilet paper dispenser so it does not interfere with the use of a grab bar. Toilet paper dispensers must allow continuous paper flow.

Recommendation See Recommendation

Costing Info (Estimated)

Provide compliant dispenser \$277

Code Reference ADA 603, 609.3, CA 11B-309.4, CA 11B-609.3

Record Number 51644

**Restrooms - Restroom Building : Restroom , Door Signage****Womens Restroom****Door Sign - Female**

Restroom , Door Signage : Door Signage Height

Finding

The gender use signage on the entrance door is not mounted at the required height.

On-Site Finding 60.50 inches

Recommendation

Post gender use signage on the center of the door at the required height.

Recommendation 58.00 - 60.00 inches

Costing Info (Estimated)

Install signage \$158

Code Reference CA 11B-703.7.2.6

Record Number 50174



Pathways STAIR Center**Restrooms - Restroom Building : Restroom , Dispensers**

Womens Restroom**Paper Towel**

Restroom , Dispensers : Dispenser Height

Finding

The height of the controls and operating mechanisms for the dispenser is not at the correct height.

On-Site Finding 47.00 inches

Recommendation

Relocate the dispenser to the correct height.

Recommendation Up to 40.00 inches

Costing Info (Estimated)

Provide compliant dispenser \$277

Code Reference ADA 309, 205, 308, 606, 308.1,CA
11B-603.5

Record Number 50172

**Restrooms - Restroom Building : Restroom , Dispensers**

Womens Restroom**Soap**

Restroom , Dispensers : Dispenser Height

Finding

The height of the controls and operating mechanisms for the dispenser is not at the correct height.

On-Site Finding 53.75 inches

Recommendation

Relocate the dispenser to the correct height.

Recommendation Up to 40.00 inches

Costing Info (Estimated)

Provide compliant dispenser \$277

Code Reference ADA 309, 205, 308, 606, 308.1,CA
11B-603.5

Record Number 50171



Pathways STAIR Center**Restrooms - Restroom Building : Restroom , Mirror****Womens Restroom**

Restroom , Mirror : Mirror Bottom Edge Height

Finding

The bottom edge of the reflective surface of the mirror is not at the correct height.

On-Site Finding 40.25 inches

Recommendation

Lower the mirror so the bottom edge of the reflective surface is no higher than recommended above the finished floor.

Recommendation Up to 40.00 inches

Costing Info (Estimated)

Lower mirror \$300

Code Reference ADA 603, 213, 603.3, CA 11B-603.3

Record Number 50173

**Restrooms - Restroom Building : Restroom , Wall Signage****Womens Restroom****Wall Sign**

Restroom , Wall Signage : No Wall Signage

Finding

There is no signage indicating accessibility on the latch side of the entry door of the restroom.

On-Site Finding None Found

Recommendation

Provide compliant signage on latch side of door.

Recommendation See Recommendation

Costing Info (Estimated)

Install signage \$158

Code Reference ADA 703, 216, 216.8, CA 11B-216.8

Record Number 50175



Pathways STAIR Center

Restrooms - Restroom Building : Restroom , Toilet Compartment

Womens Restroom

Restroom , Toilet Compartment : Seat Cover Dispenser Behind Toilet

Finding

The location of the seat cover dispenser does not provide sufficient clear floor space.

On-Site Finding Not Accessible

Recommendation

Relocate the seat cover dispenser so it provides sufficient clear floor space and does not interfere with the use of a grab bar. Make certain that the height of all operable parts of the seat cover dispenser is within reach range above the finished floor.

Recommendation See Recommendation

Costing Info (Estimated)

Provide compliant dispenser \$277

Code Reference ADA 304, 309.2, 305.1, CA 11B-603.5, CA 11B-309.2, CA 11B-305.1

Record Number 50315



Restrooms - Restroom Building : Restroom , Toilet Compartment

Womens Restroom

Restroom , Toilet Compartment : Seat Cover Dispenser Height

Finding

The height of the operable parts of the seat cover dispenser is greater than the allowed maximum height.

On-Site Finding 46.50 inches

Recommendation

Lower the seat cover dispenser so the height of all operable parts meets the required accessible height. Make certain that the location of the seat cover dispenser does not interfere with the use of a grab bar.

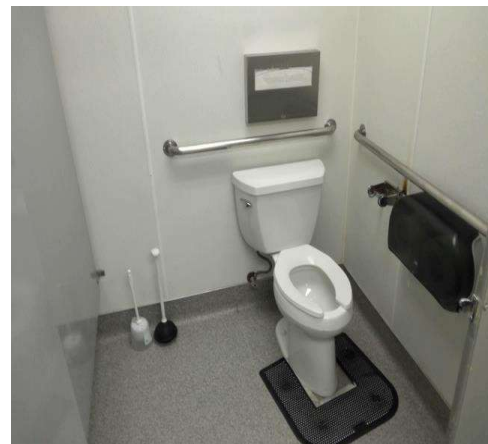
Recommendation Up to 40.00 inches

Costing Info (Estimated)

Provide compliant dispenser \$277

Code Reference ADA 309, 205, 308, 606, 308.2, CA 11B-603.5

Record Number 50316



Pathways STAIR Center

Restrooms - Restroom Building : Restroom

Womens Restroom

Restroom : Seat Cover Dispenser

Finding

Seat cover dispenser interferes with use of grab bar.

On-Site Finding Interferes

Recommendation

Move the seat cover dispenser so it does not interfere with the use of the grab bars.

Recommendation See Recommendation

Costing Info (Estimated)

\$277

Code Reference ADA 609.3

Record Number 50317



Break/Conference Room - Main Building : Break Room

Break Room

Table

Break Room : Tables - Knee Depth

Finding

The table knee depth does not meet required standards.

On-Site Finding 10.00 inches

Recommendation

Provide compliant tables.

Recommendation At least 19.00 inches

Costing Info (Estimated)

Provide compliant seating \$2,174

Code Reference ADA 309, 205, 308, 228, 306.3.3, CA 11B-902.2, CA 11B-306.3.2, CA 11B-306.3.3

Record Number 50302



Pathways STAIR Center**Break/Conference Room - Dining Building : Break Room**

Dining Room**Paper Towel**

Break Room : Break Room

Finding

The height of the controls and operating mechanisms for the dispenser is not at the correct height.

On-Site Finding 50.00 inches

Recommendation

Relocate the dispenser to the correct height.

Recommendation Up to 40.00 inches

Costing Info (Estimated)

Relocate dispenser \$110

Code Reference ADA 309, 308, CA 11B-603.5

Record Number 50096

**Break/Conference Room - Dining Building : Break Room**

Dining Room**Sink**

Break Room : Sink - Counter Height

Finding

Sink counter height does not meet the standards.

On-Site Finding 36.00 inches

Recommendation

Provide compliant sink.

Recommendation Up to 34.00 inches

Costing Info (Estimated)

Provide compliant sink \$1,800

Code Reference ADA 606.3, CA 11B-606.3

Record Number 50091



Pathways STAIR Center**Break/Conference Room - Dining Building : Break Room****Dining Room****Sink**

Break Room : Pipes not Wrapped

Finding

The pipes are not wrapped for the sink.

On-Site Finding Not Wrapped

Recommendation

Insulate or otherwise configure the water supply and drain pipes under the sink to protect against contact. Make certain there are no sharp or abrasive surfaces under the sink.

Recommendation See Recommendation

Costing Info (Estimated)

Wrap pipes \$149

Code Reference ADA 606.5,CA 11B-606.5

Record Number 50092

**Break/Conference Room - Dining Building : Break Room****Dining Room****Sink**

Break Room : Cabinet Door Hardware

Finding

The cabinet door hardware is not accessible.

On-Site Finding None Found

Recommendation

Provide compliant hardware for the cabinet door.

Recommendation See Recommendation

Costing Info (Estimated)

\$1,000

Code Reference ADA 309, 205, 308, 228,CA 11B-606.4

Record Number 50093



Pathways STAIR Center**Break/Conference Room - Dining Building : Break Room****Dining Room****Sink**

Break Room : Toe Kick Not Removed

Finding

The toe kick for the sink in break/conference room is not removed.

On-Site Finding Not Removed

Recommendation

Remove the toe kick for the sink.

Recommendation See Recommendation

Costing Info (Estimated)

\$612

Code Reference ADA 305, 306, 606.2, CA 11B-606.2, CA 11B-305, CA 11B-306

Record Number 50094

**Break/Conference Room - Dining Building : Break Room , Sink****Dining Room****Sink**

Break Room , Sink : Supply Lines

Finding

Supply lines are not wrapped for the break/conference room sink.

On-Site Finding Not Wrapped

Recommendation

Make sure that the supply lines are fully wrapped and insulated for the sink.

Recommendation See Recommendation

Costing Info (Estimated)

Wrap pipes \$149

Code Reference ADA 606.5, CA 11B-606.5

Record Number 50095



Pathways STAIR Center

Break/Conference Room - Dining Building : Break Room

Dining Room

Soap

Break Room : Break Room

Finding

The height of the controls and operating mechanisms for the dispenser is not at the correct height.

On-Site Finding 46.00 inches

Recommendation

Relocate the dispenser to the correct height.

Recommendation Up to 40.00 inches

Costing Info (Estimated)

Relocate dispenser \$110

Code Reference ADA 309, 308, CA 11B-603.5

Record Number 50097



Picnic Areas - Exterior : Picnic Tables

Picnic Tables

Picnic Tables : At least 5% not Accessible

Finding

At least 5% of the provided tables are not accessible.

On-Site Finding None Found

Recommendation

Provide enough compliant Accessible Tables (At least 5% of the total Tables).

Recommendation At least 1.00 tables

Costing Info (Estimated)

Accessible table (each) \$500

Code Reference ADA 309, 305, 205, 306, 308, 902, 228, 226.1

Record Number 50075



Pathways STAIR Center**Accessible Showers - Restroom Building : Accessible Shower , Shower Unit****Mens Restroom**

Accessible Shower , Shower Unit : Hand Held Unit Height

Finding

The hand-held sprayer unit is not mounted at the required height above the finished floor.

On-Site Finding 70.00 inches

Recommendation

Provide a compliant hand-held sprayer unit with a hose.

Recommendation Up to 48.00 inches

Costing Info (Estimated)

Provide a compliant shower head \$385

Code Reference ADA 213, 608,CA 11B-608.5

Record Number 50304

**Accessible Showers - Restroom Building : Accessible Shower , Soap Dish****Mens Restroom**

Accessible Shower , Soap Dish : Soap Dish Location

Finding

The soap dish is not mounted on the same wall as the water controls.

On-Site Finding Not Accessible

Recommendation

Relocated the soap dish on the same wall as the water controls at a compliant height.

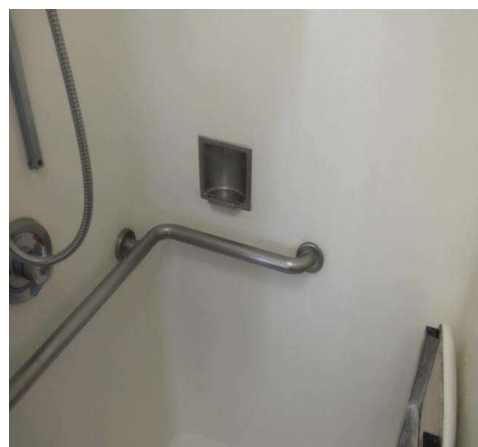
Recommendation See Recommendation

Costing Info (Estimated)

Provide compliant dispenser \$277

Code Reference CA 11B-608.10

Record Number 50308



Pathways STAIR Center

Accessible Showers - Restroom Building : Accessible Shower

Mens Restroom

Accessible Shower : Change in Level

Finding

There are thresholds or splash curbs with a height greater than allowed.

On-Site Finding Not Compliant

Recommendation

Remove at least a 36-inch wide portion of the splash curbs to provide access to the recommended accessible shower. Shower compartments that are 30 inches by 60 inches minimum shall not have curbs.

Recommendation See Recommendation

Costing Info (Estimated)

Replace existing floor pan with pan recessed below floor \$950

Code Reference ADA 608

Record Number 50330



Accessible Showers - Restroom Building : Accessible Shower , Shower Unit

Womens Restroom

Accessible Shower , Shower Unit : Hand Held Unit

Finding

There is no hand-held sprayer unit in the shower designated to be accessible.

On-Site Finding None Found

Recommendation

Provide a compliant hand-held sprayer unit with a hose.

Recommendation See Recommendation

Costing Info (Estimated)

Provide a compliant shower head \$385

Code Reference ADA 213, 608, CA 11B-608.6

Record Number 50205



Pathways STAIR Center**Accessible Showers - Restroom Building : Accessible Shower , Soap Dish****Womens Restroom**

Accessible Shower , Soap Dish : Soap Dish Location

Finding

The soap dish is not mounted on the same wall as the water controls.

On-Site Finding Not Accessible

Recommendation

Relocated the soap dish on the same wall as the water controls at a compliant height.

Recommendation See Recommendation

Costing Info (Estimated)

Provide compliant dispenser \$277

Code Reference CA 11B-608.10

Record Number 50207

**Accessible Showers - Restroom Building : Accessible Shower****Womens Restroom**

Accessible Shower : Change in Level

Finding

There are thresholds or splash curbs with a height greater than allowed.

On-Site Finding Not Compliant

Recommendation

Remove at least a 36-inch wide portion of the splash curbs to provide access to the recommended accessible shower. Shower compartments that are 30 inches by 60 inches minimum shall not have curbs.

Recommendation See Recommendation

Costing Info (Estimated)

Replace existing floor pan with pan recessed below floor \$950

Code Reference ADA 608

Record Number 50318



Pathways STAIR Center

Laundry Rooms - Laundry Building : Laundry Room

Laundry Room

Laundry Room : Turning Space Diameter

Finding

Turning space diameter inside the laundry room is not compliant.

On-Site Finding 46.00 inches

Recommendation

Provide compliant turning space inside the laundry room.

Recommendation At least 60.00 inches

Costing Info (Estimated)

Unassigned

Code Reference ADA 304.3,CA 11B-304.3

Record Number 50324



Pathways STAIR Center



Pathways STAIR Center

1601 Second Street
Berkeley, CA 94710

Date of Inspection
2/11/2020

***Estimated Facility Total: \$321,863**

*Estimated facility total is for estimating purposes only and does not represent total construction, repair totals or design fees.

Prepared By

Disability Access Consultants

(800) 743-7067

Prepared Using

