

The Cultural Hive

Veterans Memorial Building



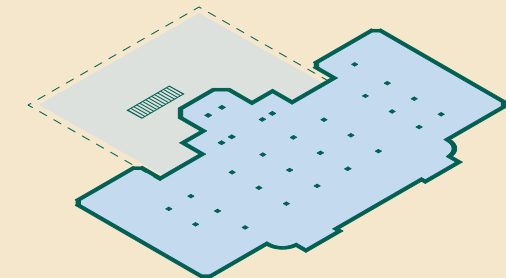
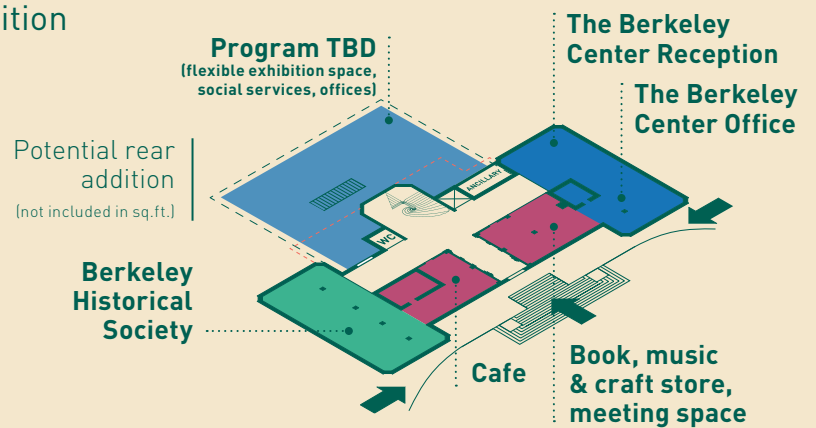
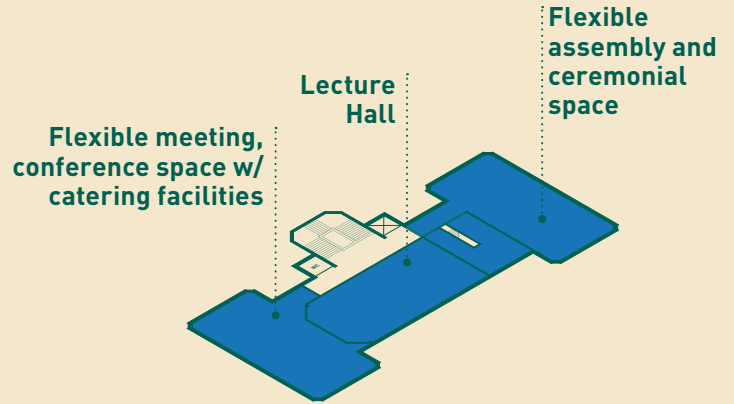
New Meeting Hall/Chambers

2180 Milvia Extension

Program Overview by Building

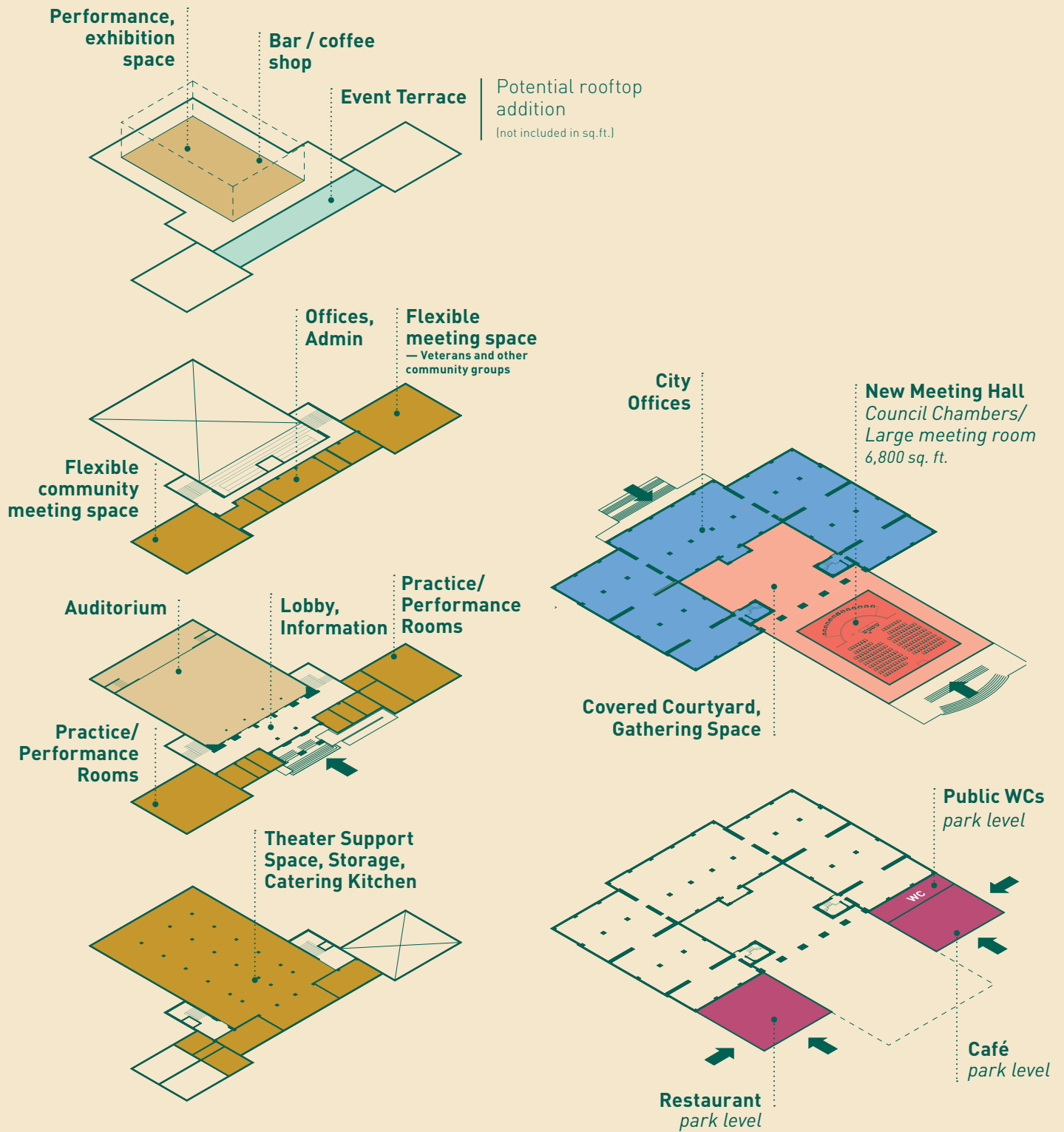
These diagrams give an overview of the distribution of programs across the Maudelle Shirek Building, the Veterans Memorial Building and 2180 Milvia, and an approximation of the total area by program. Existing City office space in 2180 Milvia, the potential Old City Hall extension and the Veterans Building rooftop addition have not been accounted for.

- The Berkeley Historical Society**
1,675 sq. ft.
- The Berkeley Center**
7,185 sq. ft.
- Archives / Storage**
8,600 sq. ft.
- Office: City**
- Performing Arts**
15,327 sq. ft.
- Auditorium**
4,950 sq. ft.
- Terrace**
~1,300 sq. ft.
- Meeting Hall / Council Chambers**
10,200 sq. ft. (and courtyard)
- Small Retail / Food & Beverage**
5,310 sq. ft.
- Primary Entrance**



The Berkeley Center

Maudelle Shirek Building



The Cultural Hive

Veterans Memorial Building

New Meeting Hall/Chambers

2180 Milvia Extension