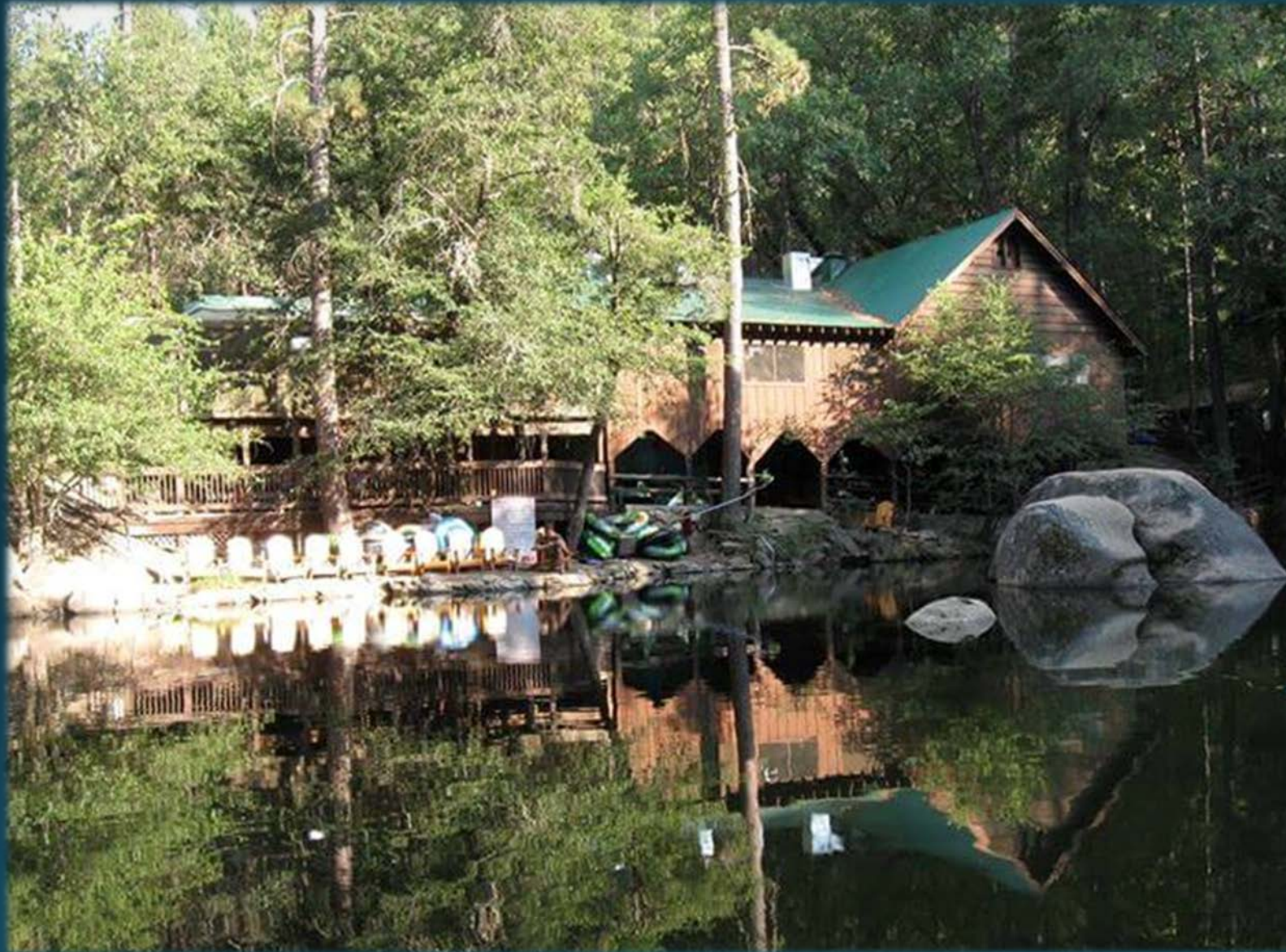
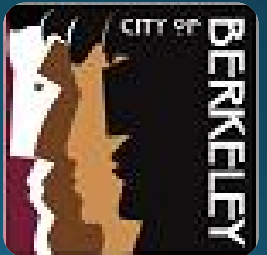


# Berkeley Tuolumne Camp (BTC) Reconstruction Project

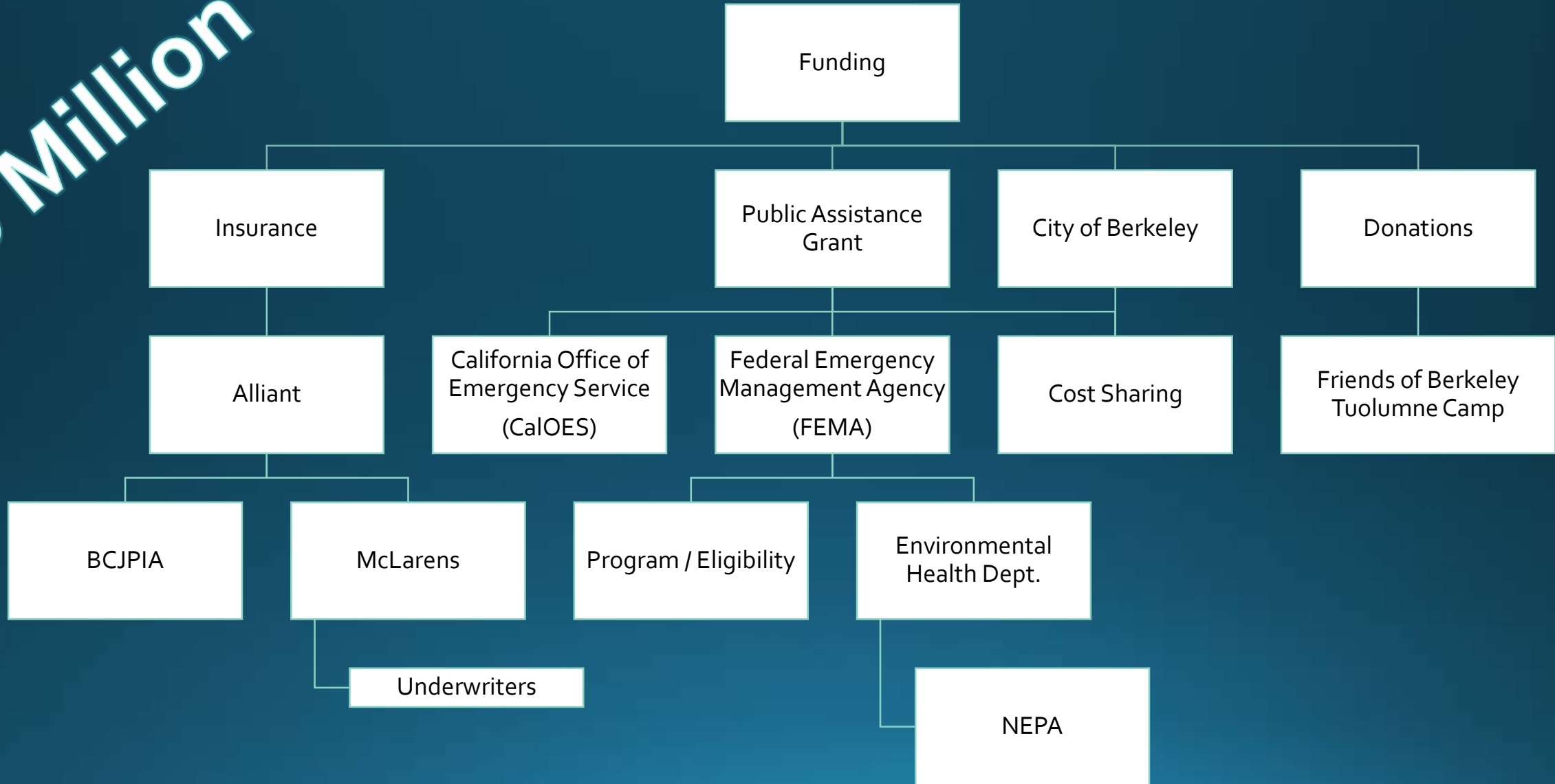


How?  
What?  
When?

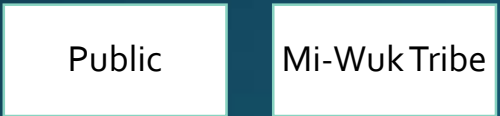
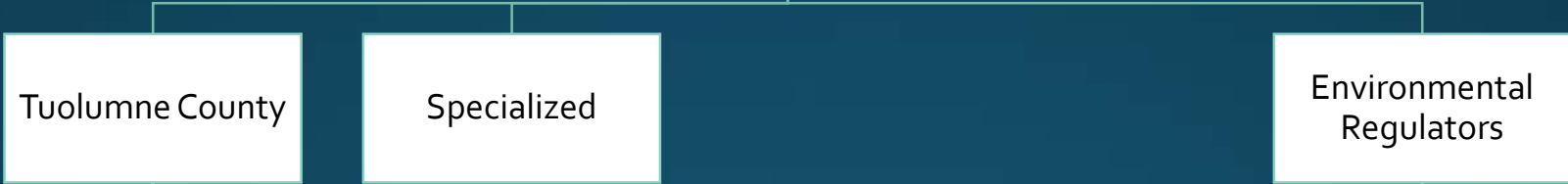
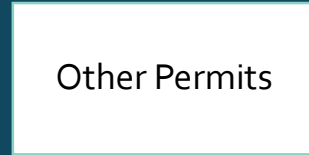


# Cost Recovery

\$60 Million



# Permits



# Project Team

City of Berkeley  
Project & Program Staff

City Attorney & Outside Counsel

Planning Consultant



Architects: Noll & Tam  
NEPA/CEQA: Placemakers  
Biology: Live Oak Associates  
Engineers: Blair, Church & Flynn

Design Consultant

**SIEGEL & STRAIN** Architects

Landscape: RHAA  
Civil Engineers: Provost & Pritchard  
Structural: Mar Structural  
Mechanical: Blue Forest  
Electrical: O'Mahoney & Myer  
Cost Estimating: tbd  
Geotechnical: ENGEO  
Kitchen Design: Studio KDA  
Trees: Environmental Intelligence

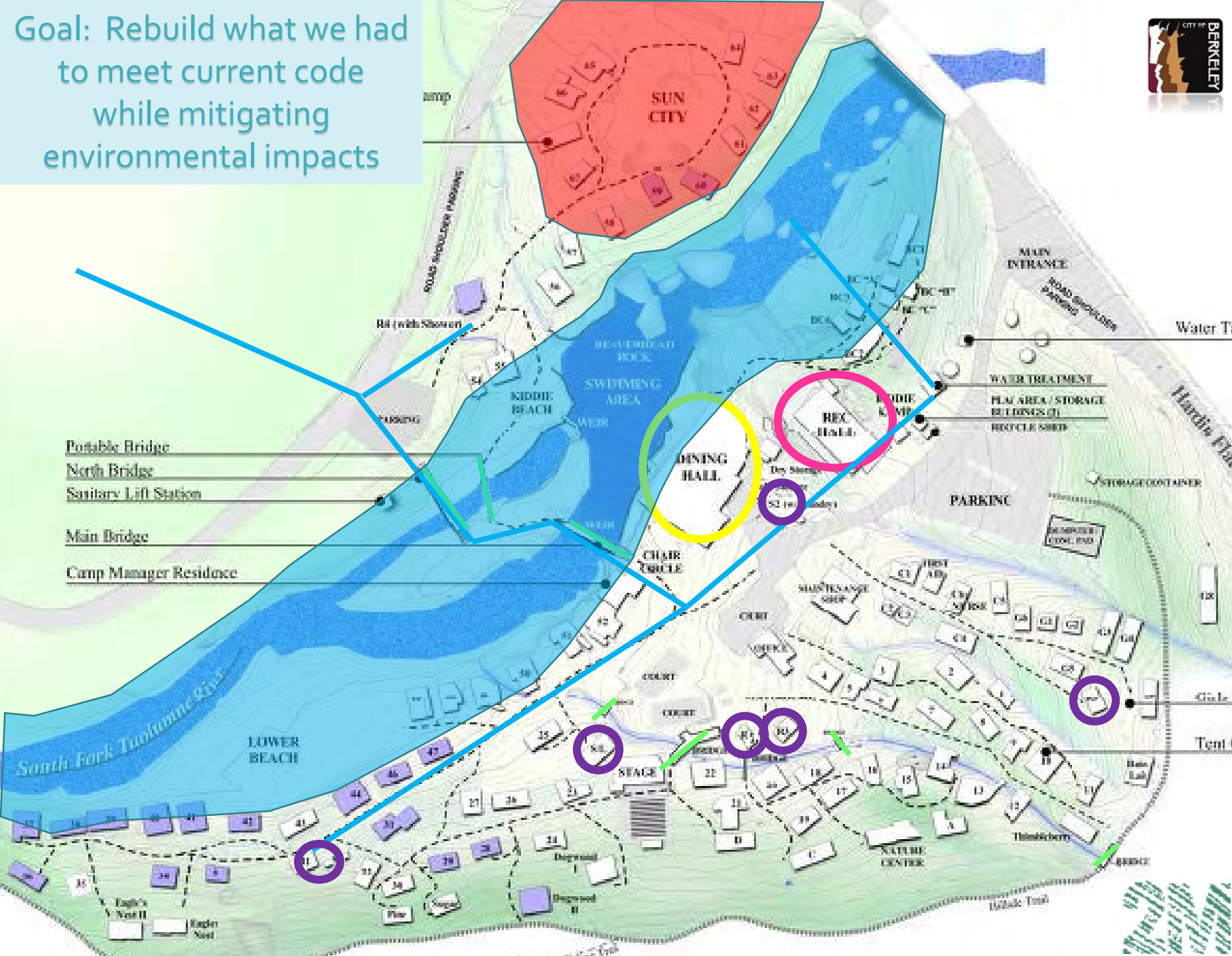
Construction  
Management  
TBD

Monitoring, Testing &  
Inspections

Hazardous Tree  
Removals  
TBD

Contractor  
TBD

Goal: Rebuild what we had to meet current code while mitigating environmental impacts



- 78 Tent Cabins
- 25 Staff Housing Structures
- 8 Restroom / Shower Buildings
- Dining Hall
- Recreation Hall
- Nature Center
- Stage & Amphitheater
- Office & Store
- Sports Courts, Archery Range, Swimming Hole & Beaches
- First Aid
- Kiddie Camp & Sauna
  
- Water Intake & Treatment
- Wastewater Treatment
- Electrical
- Propane
- Pedestrian Bridges & Trails
- Parking & Waste Management
- Storm Water Management

# Conceptual Design

- Public Outreach (2014-2015)
  - Public & Staff Workshops
  - Council & Commission Meetings
  - Online Surveys & Technical Advisory Committee
- Over a dozen public meetings & 1,000 unique participants



# Detail Design

- Ongoing Consultation and Public Presentations
  - Staff
  - Friends of Berkeley Tuolumne Camp
  - Council & Commission Meetings & Workshops



# Site Plan

- Size & Layout
  - Parking
  - Staff Camp
- Trees
- Accessibility
- Arrival



# Staff Camp

- Parking
- Staff Camp
- Trash & Recycling





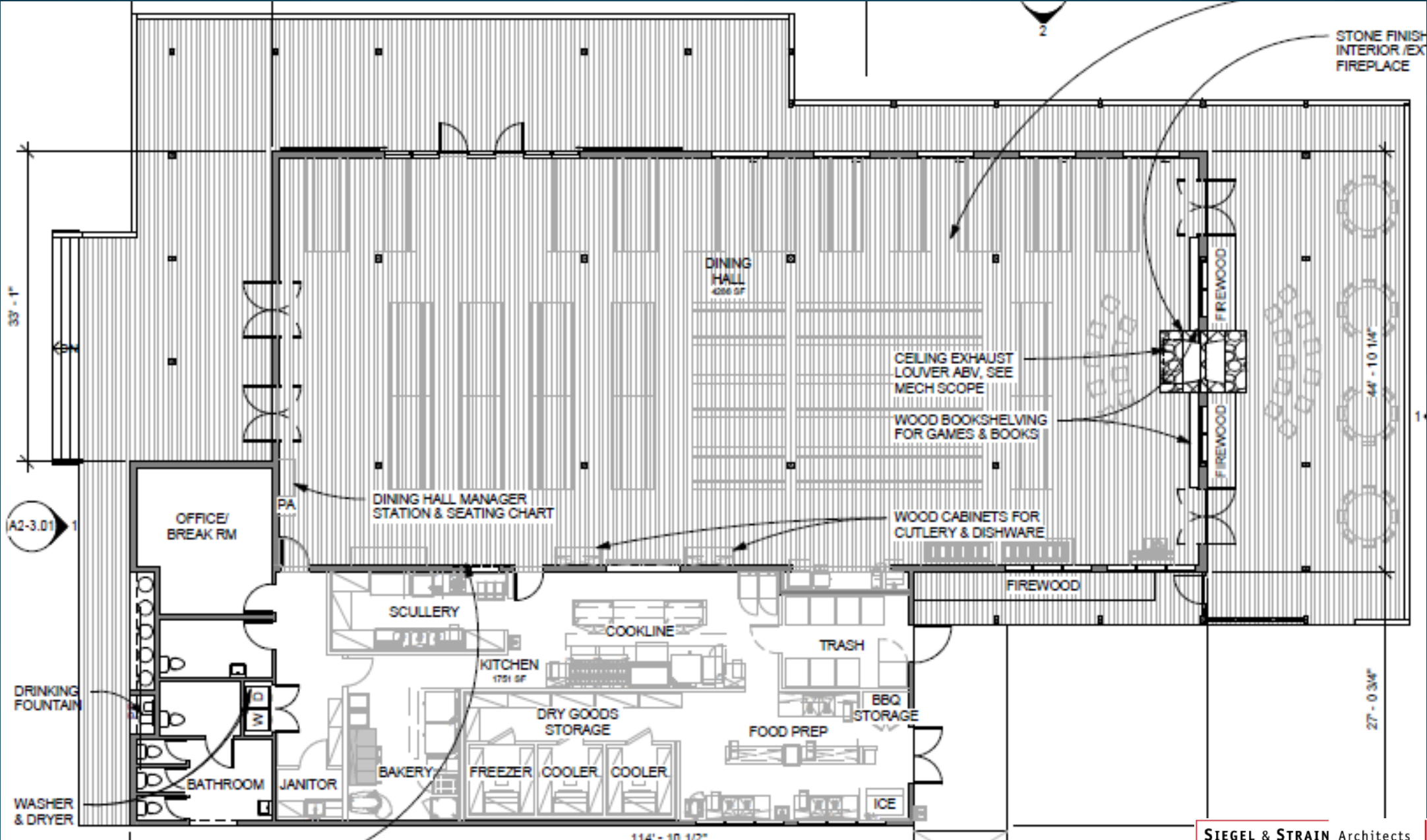
# Main Camp



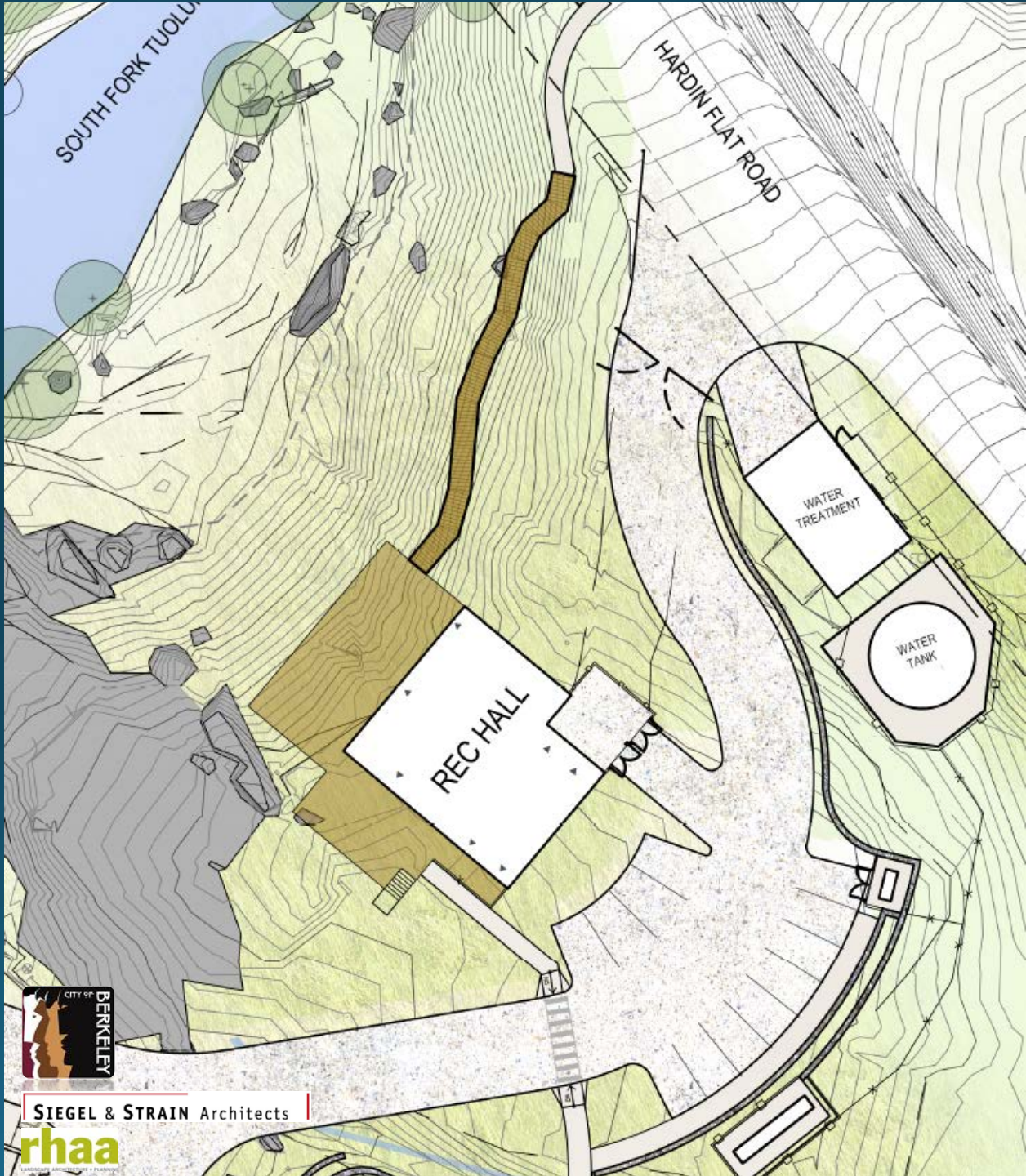
# Dining Hall



# Dining Hall Floorplan



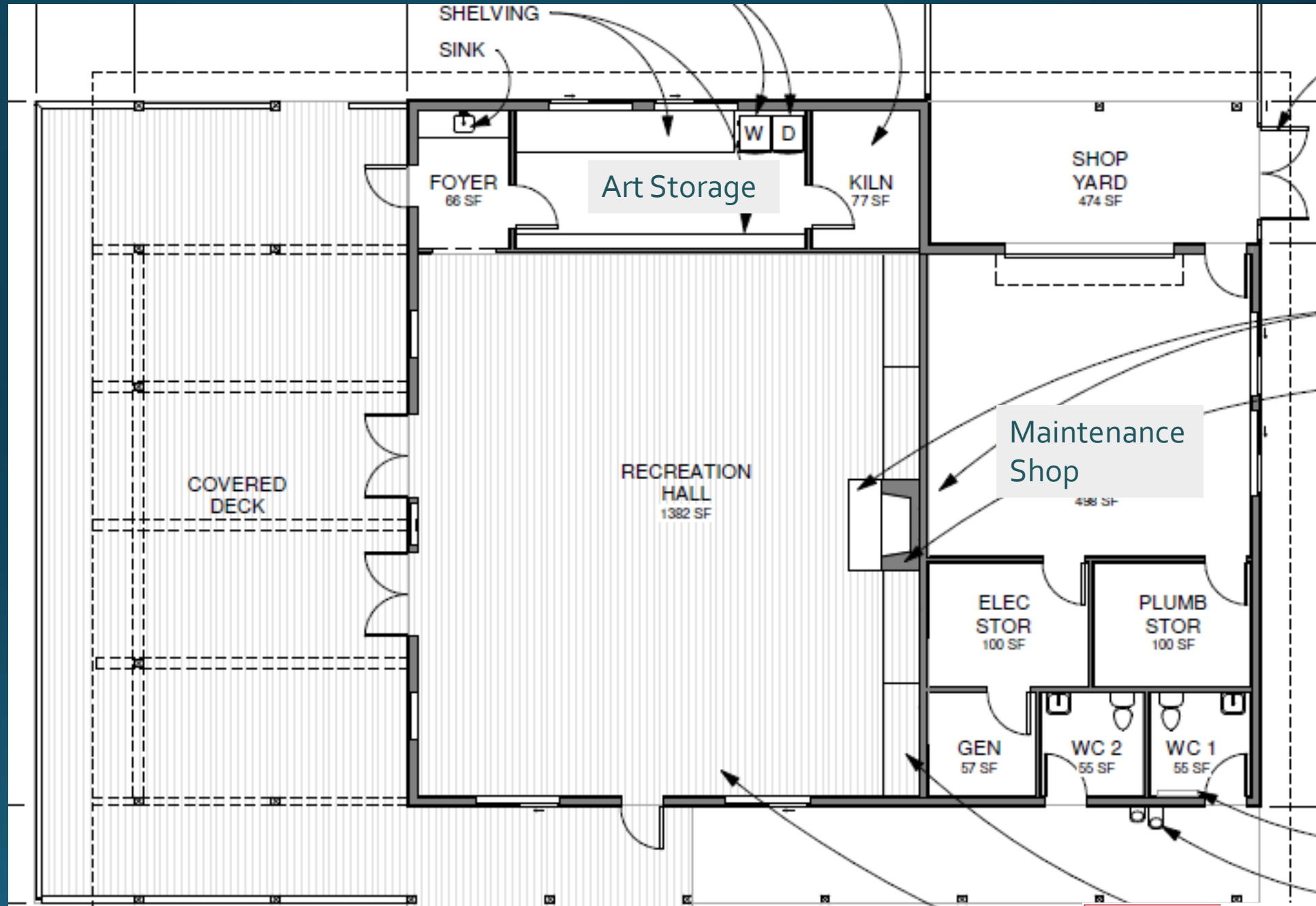
# Recreation Hall



SIEGEL & STRAIN Architects



# Recreation Hall Floorplan



# Recreation Hall





# Restrooms

Camper Showers

From 8 to 16

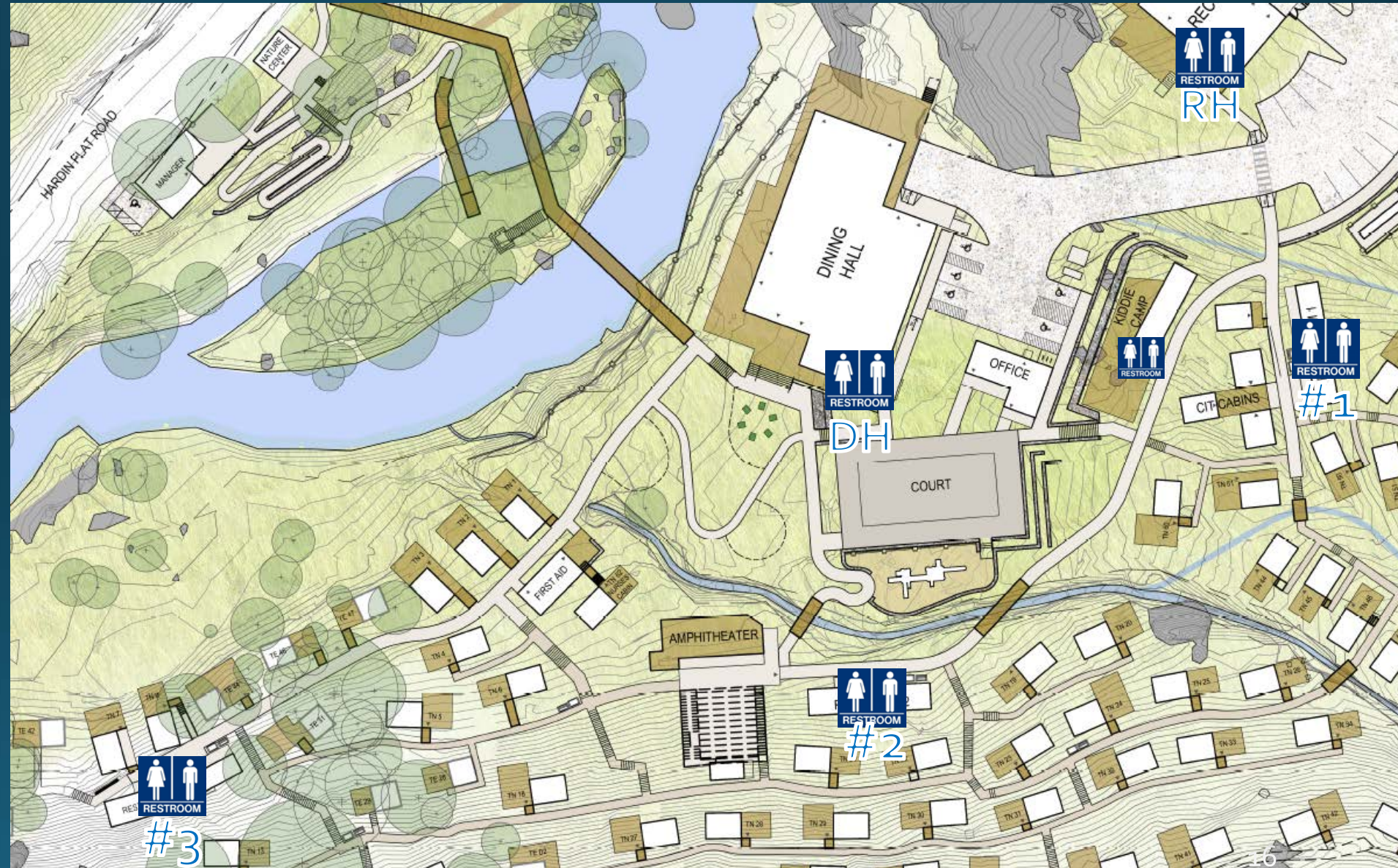
2 Bathtubs

Staff showers

From 6 to 9

Camper Toilets

From 22 to 28

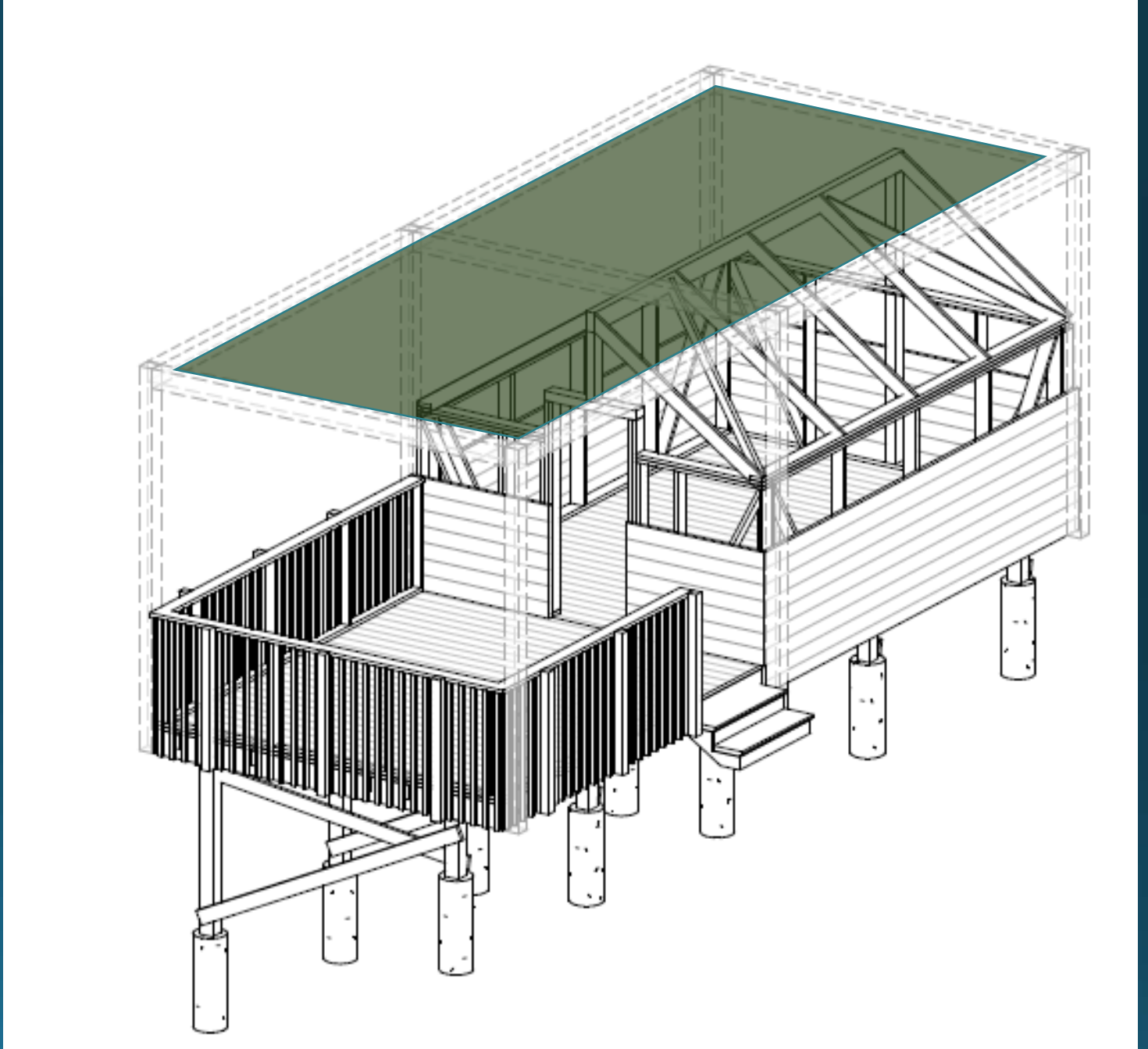






















# Ineligible Project Expenses

- Insurance vs. FEMA
- Trails
- Material Upgrades
- “Landscaping”
  - Some revegetation is code required
- Shade





# Project Schedule

	2013	2014	2015	2016	2017	2018	2019	2020	2021	2022
Debris Removal	 									
Conceptual Design										
NEPA / CEQA										
Detail Design										
Permits										
Advertise / Award										
Construction										





# Information & Updates

[https://www.cityofberkeley.info/Parks\\_Rec\\_Waterfront/Recreation/Tuolumne\\_Camp.aspx](https://www.cityofberkeley.info/Parks_Rec_Waterfront/Recreation/Tuolumne_Camp.aspx)

## Questions

